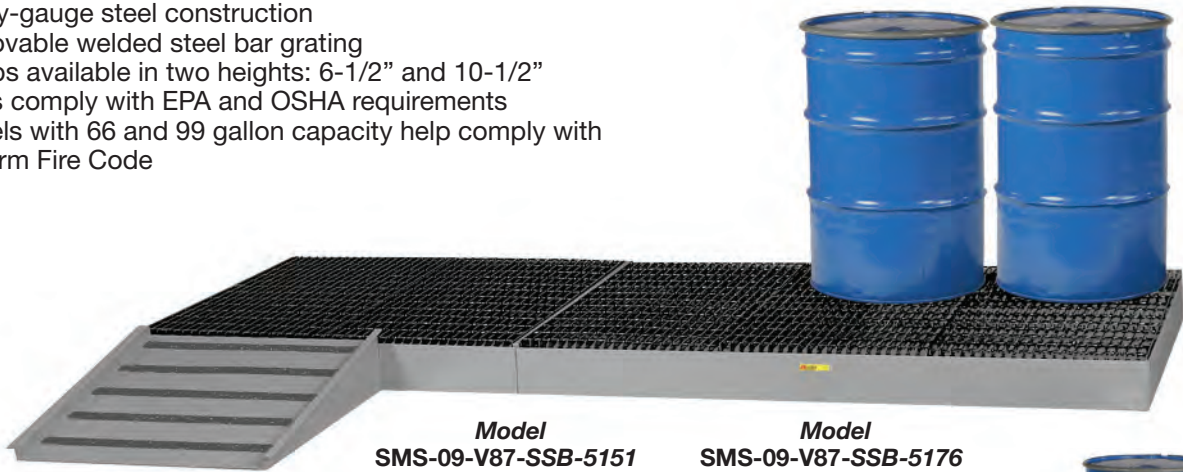


Spill Containment Pallets - SMS-09-V87-SS

Spill-Control Platforms

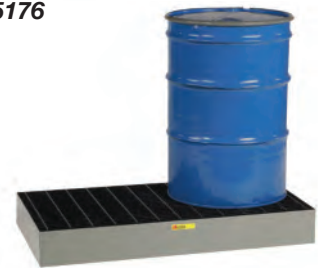
- Heavy-gauge steel construction
- Removable welded steel bar grating
- Ramps available in two heights: 6-1/2" and 10-1/2"
- Helps comply with EPA and OSHA requirements
- Models with 66 and 99 gallon capacity help comply with Uniform Fire Code



Low-Profile Models

	SUMP CAP.	DIMENSIONS W x L x H	Model No.	Ship Wt.	Capacity Lbs. UDL
Ramp*	-	33 x 36 x 6.5	SMS-09-V87-SSB-RAMP	70	1500

*Ramp not for use with SMS-09-V87-SSB-5125-66



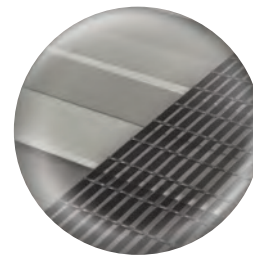
Model
SMS-09-V87-SSB-5125

Forkliftable Models

- Four-way fork entry with 4" underclearance

	SUMP CAP.	DIMENSIONS W x L x H	Model No.	Ship Wt.	Capacity Lbs. UDL
2-Drum	33 gal.	51 x 26 x 10.5	SMS-09-V87-SST-5125	138	3000
4-Drum	66 gal.	51 x 51 x 10.5	SMS-09-V87-SST-5151	259	6000
6-Drum	99 gal.	76 x 51 x 10.5	SMS-09-V87-SST-5176	381	9000
Ramp*	-	33 x 36 x 10.5	SMS-09-V87-SST-RAMP	95	1500

*Ramp not for use with SMS-09-V87-SST-5125-66



All platforms feature full height internal support channels with flow-through vents.



4-Drum Forkliftable
with Ramp



1-Drum Forkliftable



4-Drum Forkliftable



6-Drum Forkliftable

Spill Containment Pallets - SMS-09-V87-SS

Spill-Control Platform with Drum Rack

1600 lbs. Capacity

- Heavy-gauge steel construction
- One-drum unit has 33 gallon sump capacity
- Two-drum unit has 66 gallon sump capacity
- Four-way forkliftable access

Drum Capacity	Dimensions W x L x H	Model No.	Wt.
1-Drum	26 x 51 x 22	SMS-09-V87-SST-5125-1D	105
2-Drum	51 x 51 x 22	SMS-09-V87-SST-5151-2D	170



Model
SMS-09-V87-SST-5151-2D

Spill-Control Cart

3000 lbs. Capacity

- Allows up to four 55 gallon drums
- Durable, welded steel construction
- Sump has removable steel bar grating deck
- 6" non-marking polyurethane casters
- Two rigid and two swivel casters
- Removable pipe handle with cross brace
- Handle extends 25" above top of sump



Model
SMS-09-V87-SSB-5151-6PY-FL

Sump Cap.	2-DRUM with wheel brakes		4-DRUM with floor lock	
	Model No.	Wt.	Model No.	Wt.
33 Gallon Cap.	SMS-09-V87-SSB-5125-6PYBK	170	-	-
66 Gallon Cap.	SMS-09-V87-SSB-512566-6PYBK	203	SMS-09-V87-SSB-5151-6PY-FL	341



Model
SMS-09-V87-SSB-5125-6PYBK

