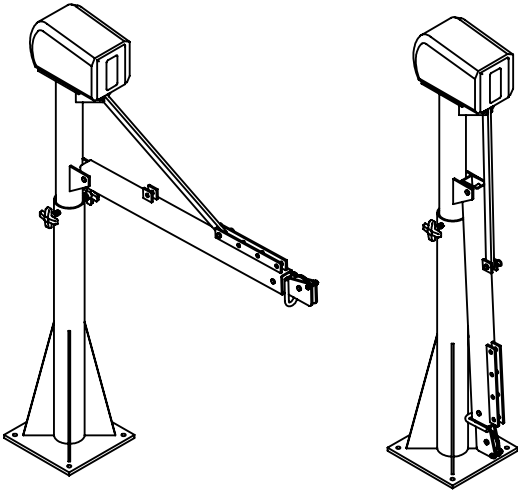
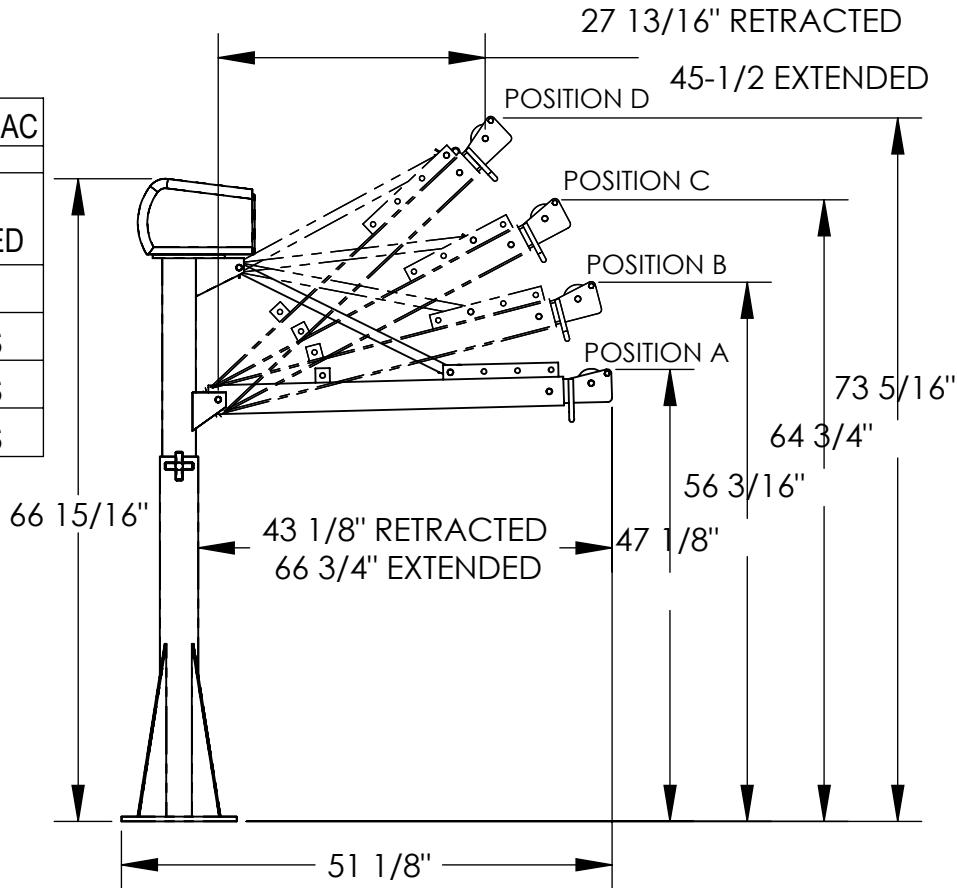


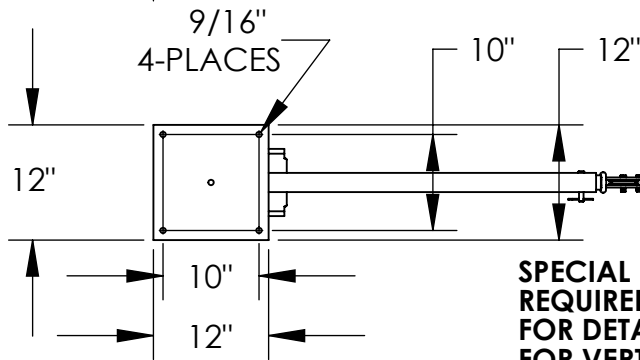
Industrial Jib Crane Technical Drawings

SMS-09-V46-WTJ

BOOM CAPACITY CHART SMS-09-V46-WTJ-E-15-3-AC			
BOOM POSITION	BOOM EXTENSION		
	FULLY RETRACTED	MID-POSITION	FULLY EXTENDED
A	650 LBS	300 LBS	200 LBS
B	1100 LBS	650 LBS	550 LBS
C	1250 LBS	850 LBS	650 LBS
D	1500 LBS	1150 LBS	800 LBS



3D VIEW OF ASSEMBLED & COLLAPSED UNIT SHOWN FOR REFERENCE ONLY



SPECIAL FOUNDATION MAY BE REQUIRED, SEE OWNERS MANUAL FOR DETAILS. UNIT IS DESIGNED FOR VERTICAL LIFTING ONLY. DO NOT USE FOR LIFTING PERSONNEL OR FOR OVERHEAD LIFTING.

	APPROXIMATE LOAD SPEED (FT./MIN.)			
	NO LOAD		FULL LOAD	
	FULL REEL	EMPTY REEL	FULL REEL	EMPTY REEL
SA9000AC	18	6	7	3.5

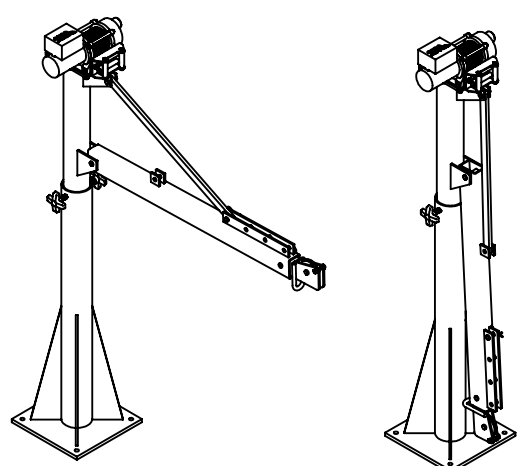
STANDARD FEATURES

- MODEL NUMBER IS: SMS-09-V46-WTJ-E-15-3-AC
- CAPACITY IS: 1,500 LBS.
- OVERALL WIDTH IS: 12"
- OVERALL RETRACT LENGTH IS: 51 1/8"
- USABLE RETRACTED LENGTH IS: 43 1/8"
- USABLE EXTENDED LENGTH IS: 66 3/4"
- OVERALL HEIGHT IS: 66 15/16"
- 115V AC POWERED WINCH WITH FINGER TOGGLE SWITCH
- 7/32" X 25' LG CABLE AND HOOK
- DURABLE LIQUID PAINT BLUE FINISH

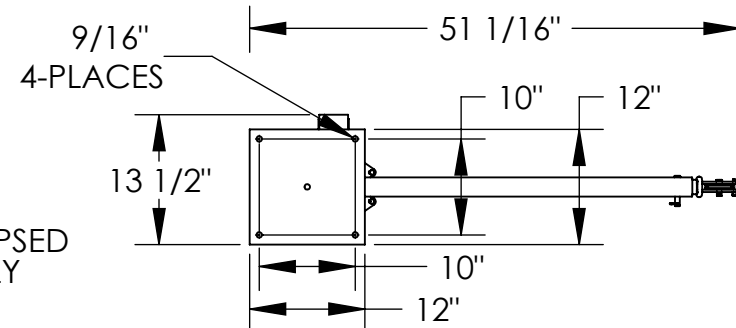
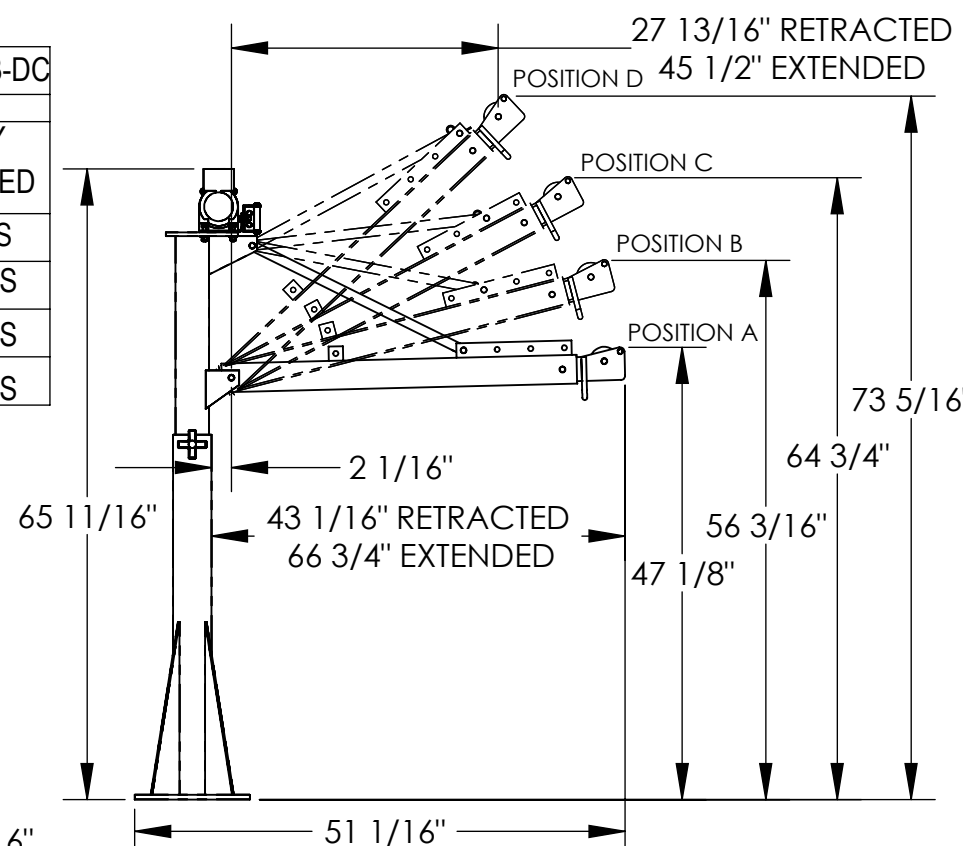


BOOM CAPACITY CHART SMS-09-V46-WTJ-E-15-3-DC

BOOM POSITION	BOOM EXTENSION		
	FULLY RETRACTED	MID-POSITION	FULLY EXTENDED
A	650 LBS	300 LBS	200 LBS
B	1100 LBS	650 LBS	550 LBS
C	1250 LBS	850 LBS	650 LBS
D	1500 LBS	1150 LBS	800 LBS



3D VIEW OF ASSEMBLED & COLLAPSED UNIT SHOWN FOR REFERENCE ONLY



PULL, SPEED, AMPERES, VOLTS (FIRST LAYER)	
LINE PULL	LINE SPEED FT/MIN (M/MIN)
LBS (KGS)	12 V DC
0	9 (2.74)
500 (227)	7.5 (2.28)
1000 (454)	5.9 (1.8)
2000 (909)	2 (0.6)

SPECIAL FOUNDATION MAY BE REQUIRED, SEE OWNERS MANUAL FOR DETAILS. UNIT IS DESIGNED FOR VERTICAL LIFTING ONLY. DO NOT USE FOR LIFTING PERSONNEL OR FOR OVERHEAD LIFTING.

STANDARD FEATURES

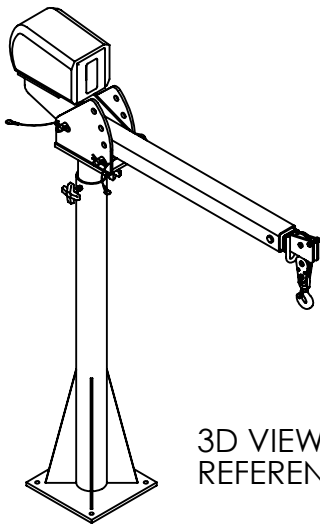
- MODEL NUMBER IS: SMS-09-V46-WTJ-E-15-3-DC
- CAPACITY IS: 1,500 LBS.
- OVERALL WIDTH IS: 13 1/2"
- OVERALL RETRACT LENGTH IS: 51 1/16"
- USABLE RETRACTED LENGTH IS: 43 1/16"
- USABLE EXTENDED LENGTH IS: 66 3/4"
- OVERALL HEIGHT IS: 65 11/16"
- 12V DC POWERED WINCH WITH HAND PENDANT CONTROL
- 3/16" X 46' LG CABLE AND HOOK
- DURABLE LIQUID PAINT BLUE FINISH



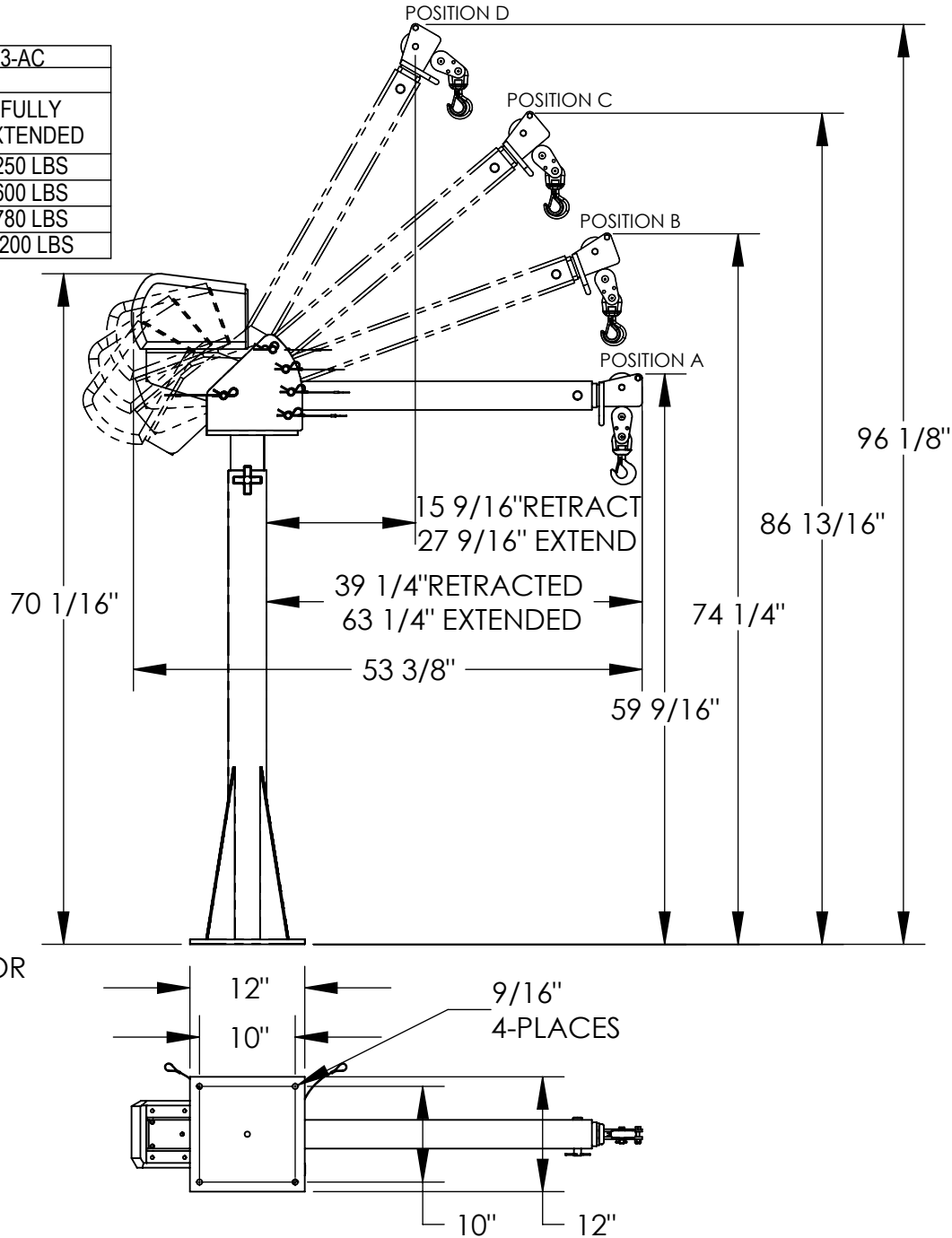
BOOM CAPACITY CHART SMS-09-V46-WTJ-20-3-AC

BOOM POSITION	BOOM EXTENSION		
	FULLY RETRACTED	MID-POSITION	FULLY EXTENDED
A	650 LBS	400 LBS	250 LBS
B	1000 LBS	770 LBS	600 LBS
C	1250 LBS	950 LBS	780 LBS
D	2000 LBS	1500 LBS	1200 LBS

SPECIAL FOUNDATION MAY BE REQUIRED, SEE OWNERS MANUAL FOR DETAILS. UNIT IS DESIGNED FOR VERTICAL LIFTING ONLY. DO NOT USE FOR LIFTING PERSONNEL OR FOR OVERHEAD LIFTING.



3D VIEW SHOWN FOR REFERENCE ONLY



STANDARD FEATURES

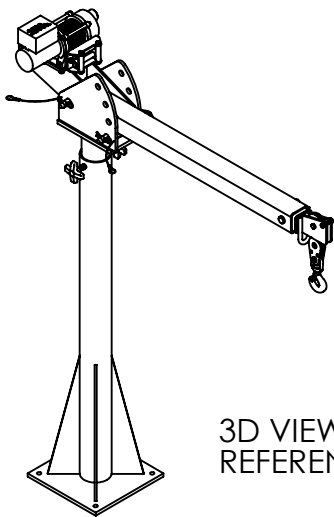
- MODEL NUMBER IS: SMS-09-V46-WTJ-20-3-AC
- CAPACITY IS: 2,000 LBS.
- OVERALL WIDTH IS: 12"
- OVERALL RETRACTED LENGTH IS: 53 3/8"
- USABLE RETRACTED LENGTH IS: 39 1/4"
- USABLE EXTENDED LENGTH IS: 63 1/4"
- OVERALL HEIGHT IS: 70 1/16"
- OVERALL STORAGE HEIGHT IS: 73"
- 115V AC POWERED WINCH WITH FINGER TIP TOGGLE SWITCH
- 7/32" X 25' LG CABLE AND HOOK
- DURABLE LIQUID PAINT BLUE FINISH



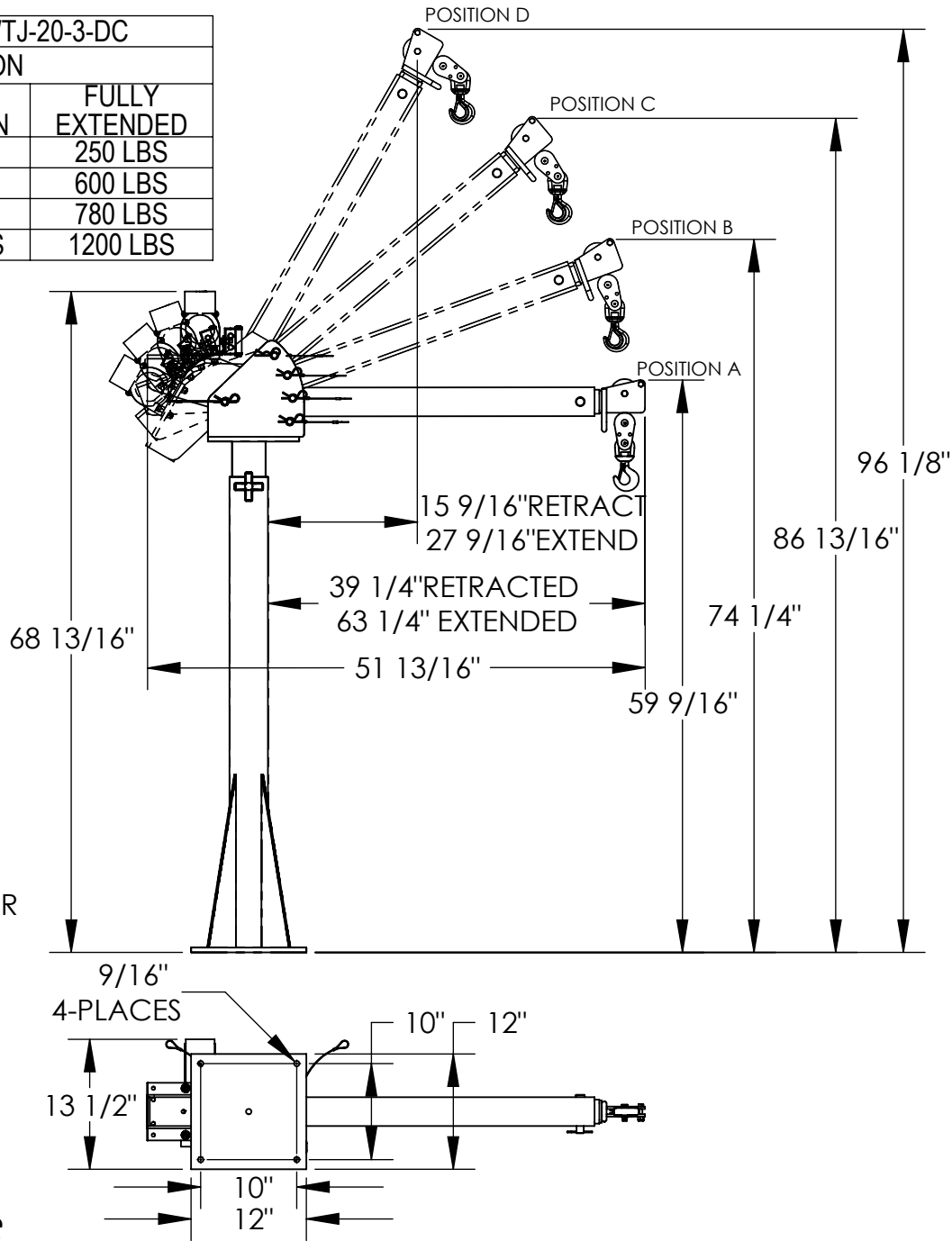
BOOM CAPACITY CHART SMS-09-V46-WTJ-20-3-DC

BOOM POSITION	BOOM EXTENSION		
	FULLY RETRACTED	MID-POSITION	FULLY EXTENDED
A	650 LBS	400 LBS	250 LBS
B	1000 LBS	770 LBS	600 LBS
C	1250 LBS	950 LBS	780 LBS
D	2000 LBS	1500 LBS	1200 LBS

SPECIAL FOUNDATION MAY BE REQUIRED, SEE OWNERS MANUAL FOR DETAILS. UNIT IS DESIGNED FOR VERTICAL LIFTING ONLY. DO NOT USE FOR LIFTING PERSONNEL OR FOR OVERHEAD LIFTING.



3D VIEW SHOWN FOR REFERENCE ONLY



STANDARD FEATURES

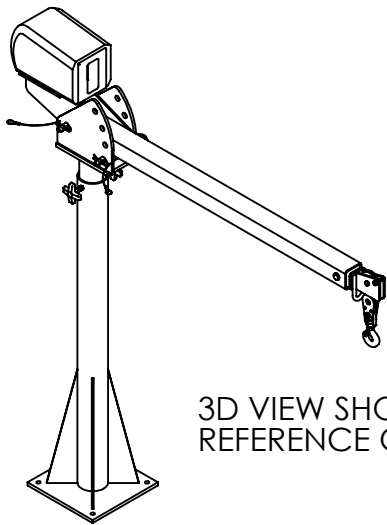
- MODEL NUMBER IS: SMS-09-V46-WTJ-20-3-DC
- CAPACITY IS: 2,000 LBS.
- OVERALL WIDTH IS: 13 1/2"
- OVERALL RETRACT LENGTH IS: 51 13/16"
- USABLE RETRACTED LENGTH IS: 39 1/4"
- USABLE EXTENDED LENGTH IS: 63 1/4"
- OVERALL HEIGHT IS: 68 13/16"
- OVERALL STORAGE HEIGHT IS: 70"
- 12V DC POWERED WINCH WITH HAND PENDANT CONTROL
- 3/16" X 46' LG CABLE WITH HOOK
- DURABLE LIQUID PAINT BLUE FINISH



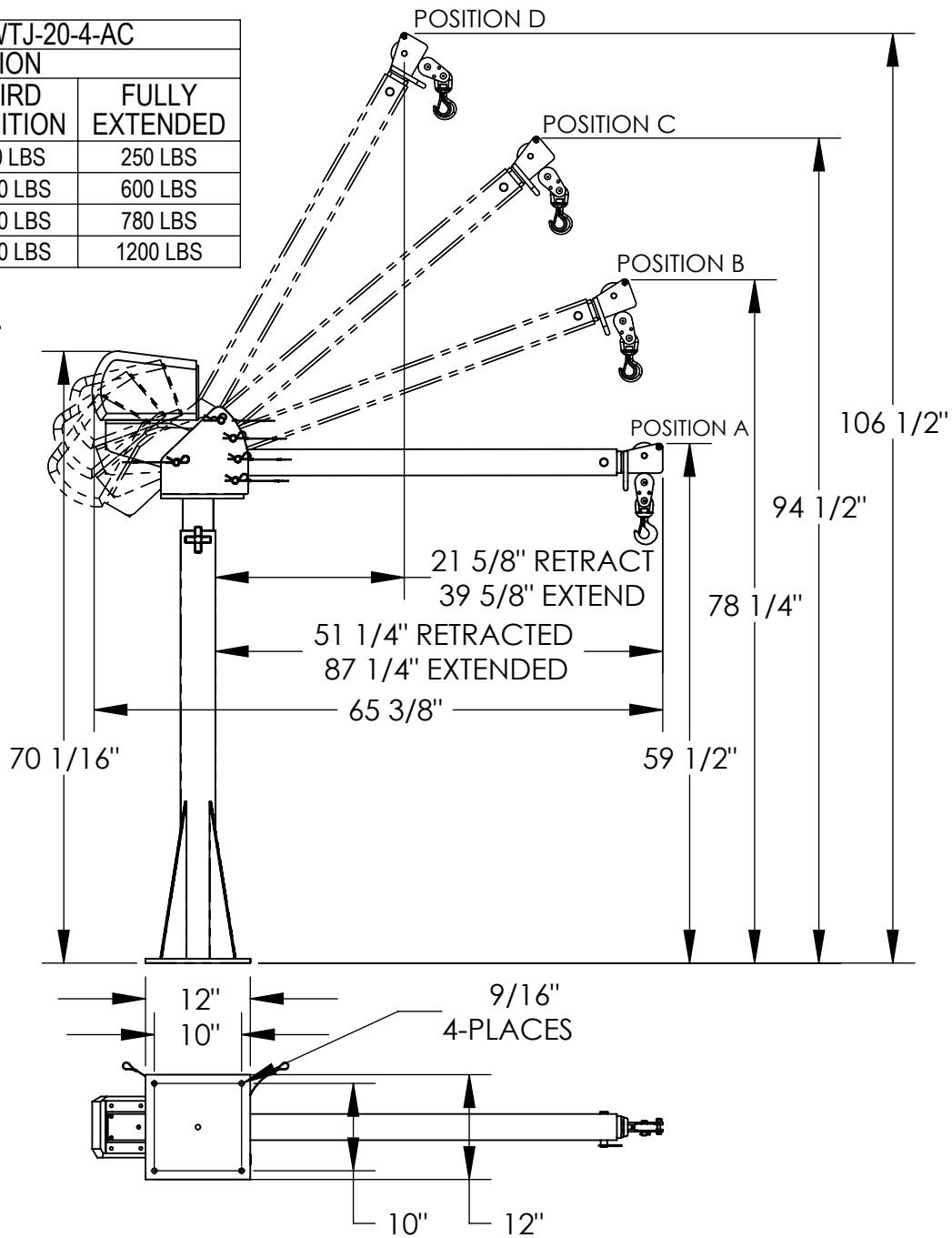
BOOM CAPACITY CHART SMS-09-V46-WTJ-20-4-AC

BOOM POSITION	BOOM EXTENSION			
	FULLY RETRACTED	SECOND POSITION	THIRD POSITION	FULLY EXTENDED
A	1100 LBS	800 LBS	600 LBS	250 LBS
B	1500 LBS	1200 LBS	1000 LBS	600 LBS
C	1850 LBS	1450 LBS	1250 LBS	780 LBS
D	2000 LBS	2000 LBS	1900 LBS	1200 LBS

SPECIAL FOUNDATION MAY BE REQUIRED, SEE OWNERS MANUAL FOR DETAILS. UNIT IS DESIGNED FOR VERTICAL LIFTING ONLY. DO NOT USE FOR LIFTING PERSONNEL OR FOR OVERHEAD LIFTING.



3D VIEW SHOWN FOR REFERENCE ONLY



STANDARD FEATURES

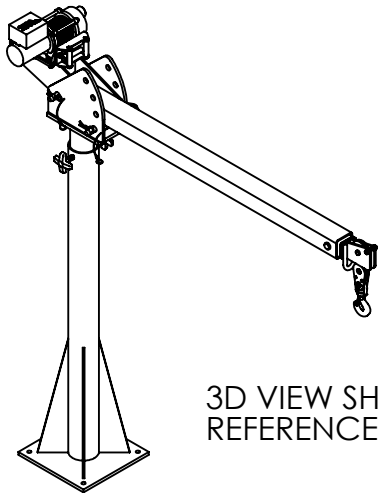
- MODEL NUMBER IS: SMS-09-V46-WTJ-20-4-AC
- CAPACITY IS: 2,000 LBS.
- OVERALL WIDTH IS: 12"
- OVERALL LENGTH IS: 65 3/8"
- USABLE RETRACTED LENGTH IS: 51 1/4"
- USABLE EXTENDED LENGTH IS: 87 1/4"
- OVERALL HEIGHT IS: 70 1/16"
- OVERALL STORAGE HEIGHT IS: 73"
- 115V AC POWERED WINCH WITH FINGER TIP TOGGLE SWITCH
- 7/32" X 25' LG CABLE AND HOOK
- DURABLE LIQUID PAINT BLUE FINISH



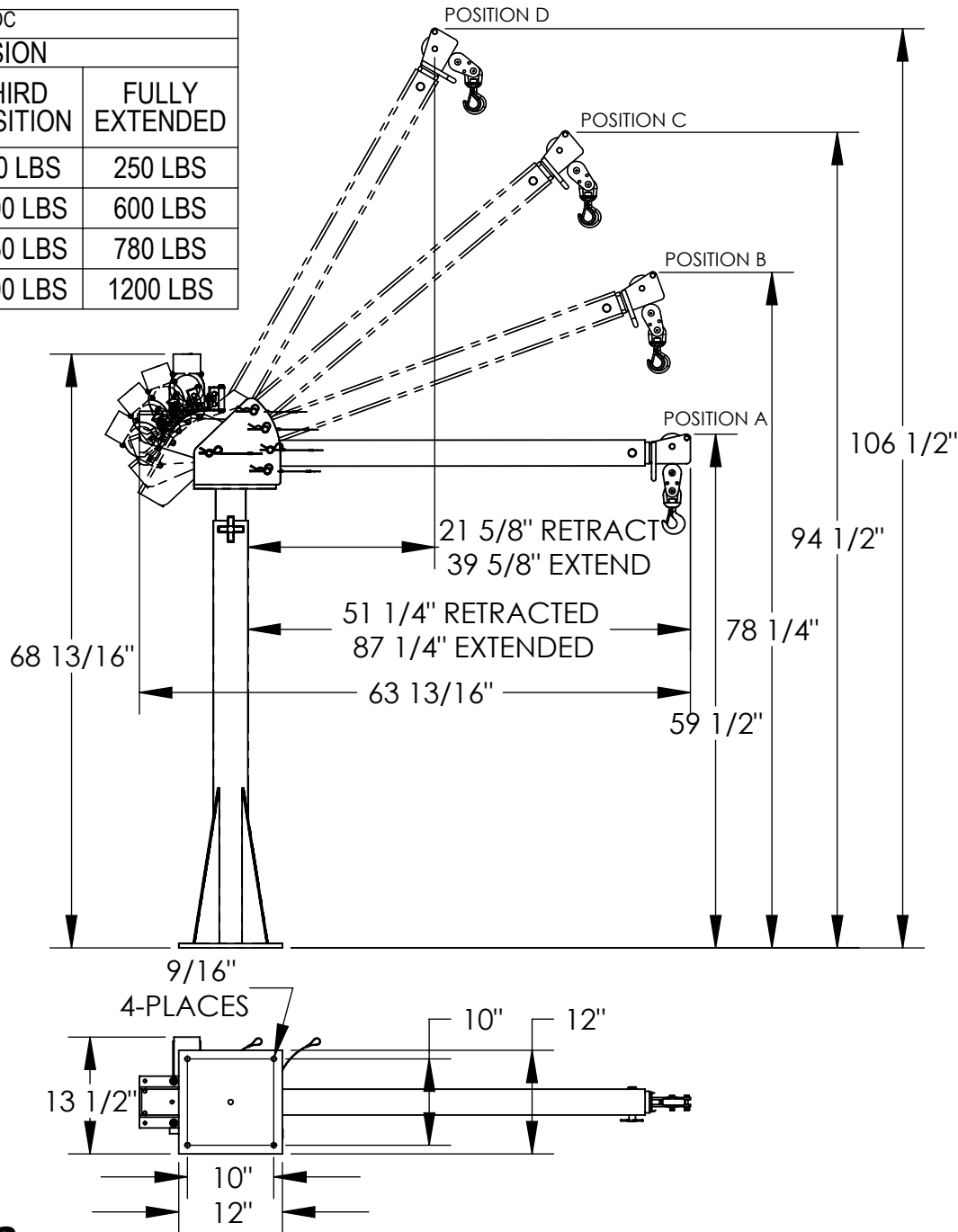
BOOM CAPACITY CHART SMS-09-V46-WTJ-20-4-DC

BOOM POSITION	BOOM EXTENSION			
	FULLY RETRACTED	SECOND POSITION	THIRD POSITION	FULLY EXTENDED
A	1100 LBS	800 LBS	600 LBS	250 LBS
B	1500 LBS	1200 LBS	1000 LBS	600 LBS
C	1850 LBS	1450 LBS	1250 LBS	780 LBS
D	2000 LBS	2000 LBS	1900 LBS	1200 LBS

SPECIAL FOUNDATION MAY BE REQUIRED, SEE OWNERS MANUAL FOR DETAILS. UNIT IS DESIGNED FOR VERTICAL LIFTING ONLY. DO NOT USE FOR LIFTING PERSONNEL OR FOR OVERHEAD LIFTING.



3D VIEW SHOW FOR REFERENCE ONLY



STANDARD FEATURES

MODEL NUMBER IS: SMS-09-V46-WTJ-20-4-DC

CAPACITY IS: 2,000 LBS.

OVERALL WIDTH IS: 13 1/2"

OVERALL RETRACT LENGTH IS: 63 13/16"

USABLE RETRACTED LENGTH IS: 51 1/4"

USABLE EXTENDED LENGTH IS: 87 1/4"

OVERALL HEIGHT IS: 68 13/16"

OVERALL STORAGE HEIGHT IS: 70"

12V DC POWERED WINCH WITH HAND PENDANT CONTROL

3/16" X 46' LG CABLE AND HOOK

DURABLE LIQUID PAINT BLUE FINISH

