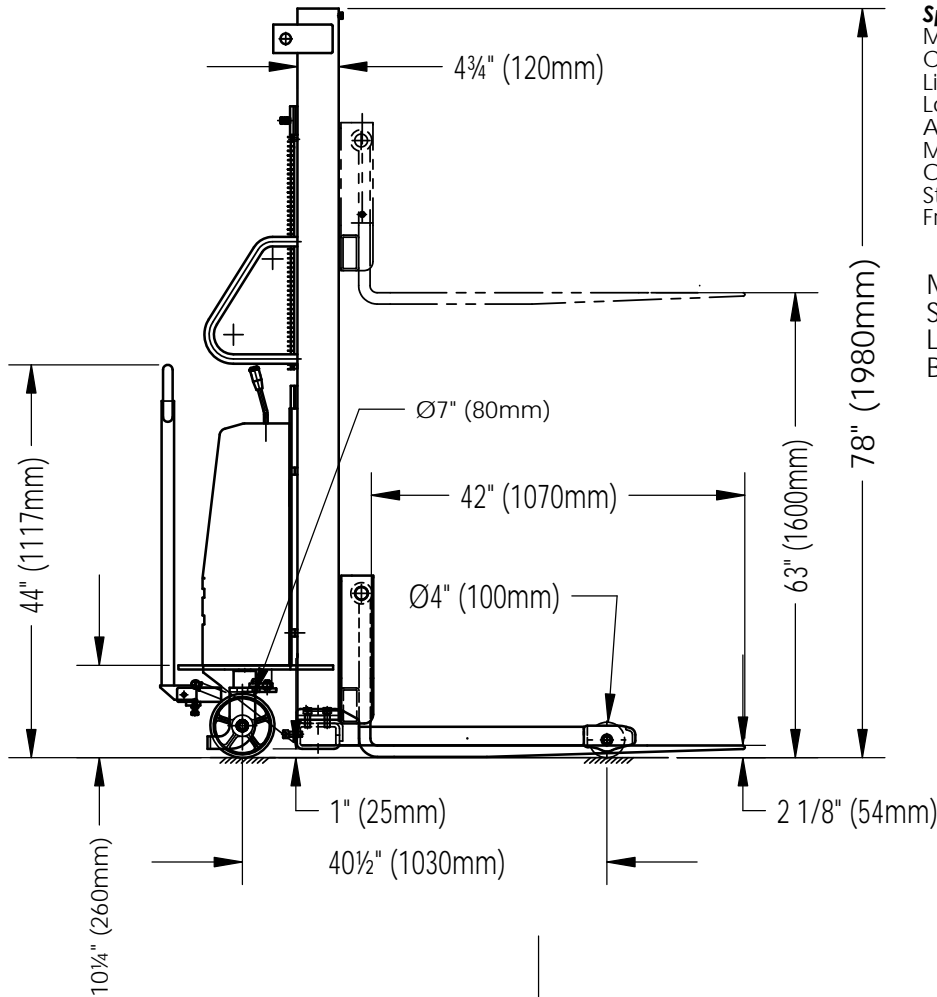


# Electric Pallet Stacker Technical Drawings

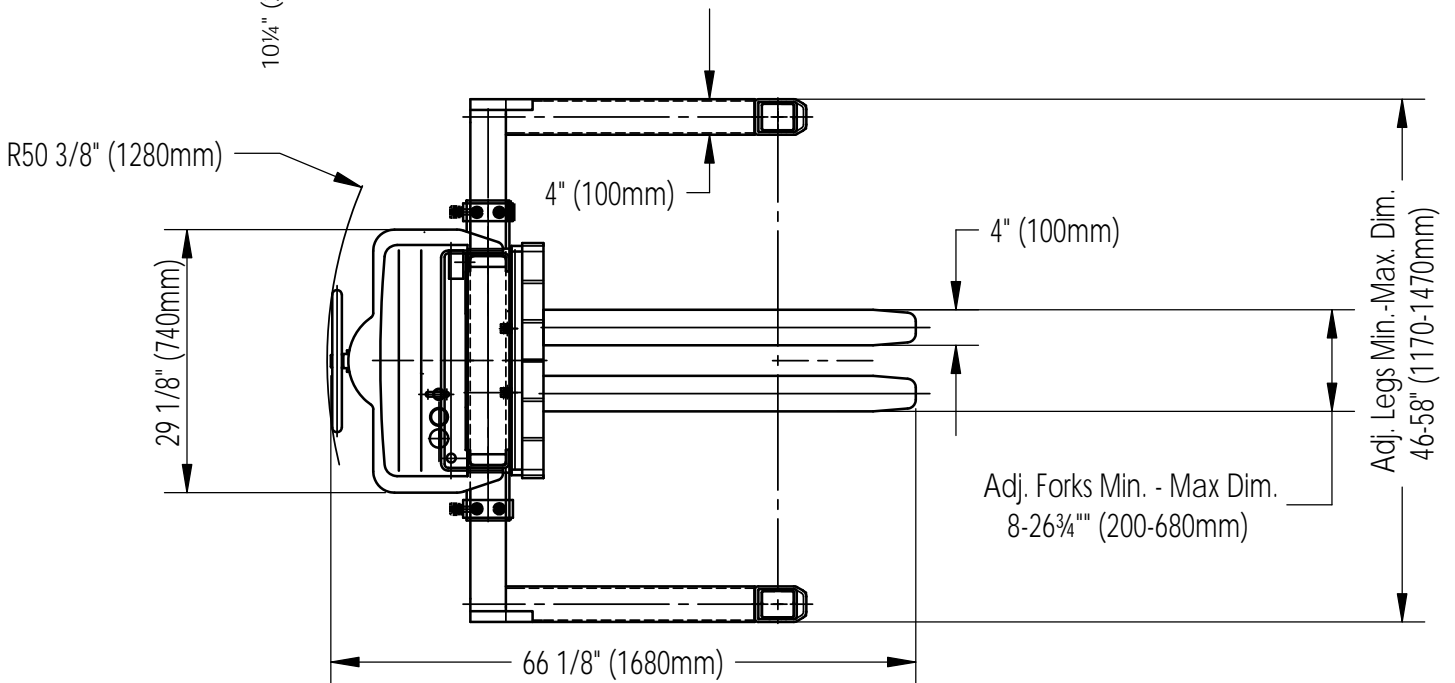
## SMS-09-V46-SL



### Specifications

Model # SMS-09-V46-SL-63-AA  
 Capacity (UDL): 2,000 lbs  
 Lift height: 63"  
 Lowered height: 2 1/8"  
 Adjustable forks & adjustable legs  
 Mast: Single  
 Overall mast height: 78"  
 Steering wheel: Ø7x2"  
 Front wheel: Ø4x2.9"

Mast: Double  
 Safety Shield: Yes  
 Lift Motor: DC12V/1.8kW  
 Battery: (1)12V/140Ah

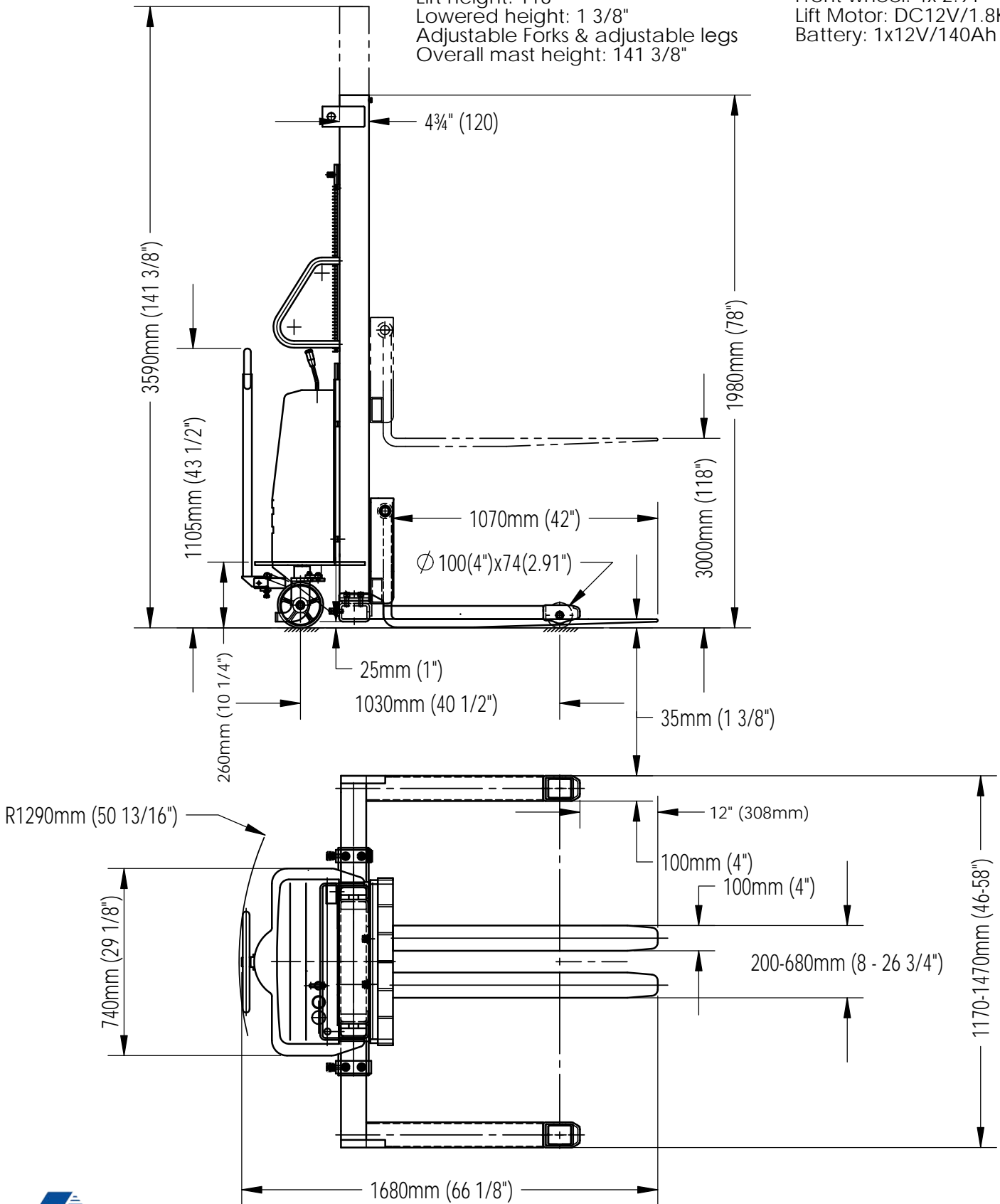




### Specifications

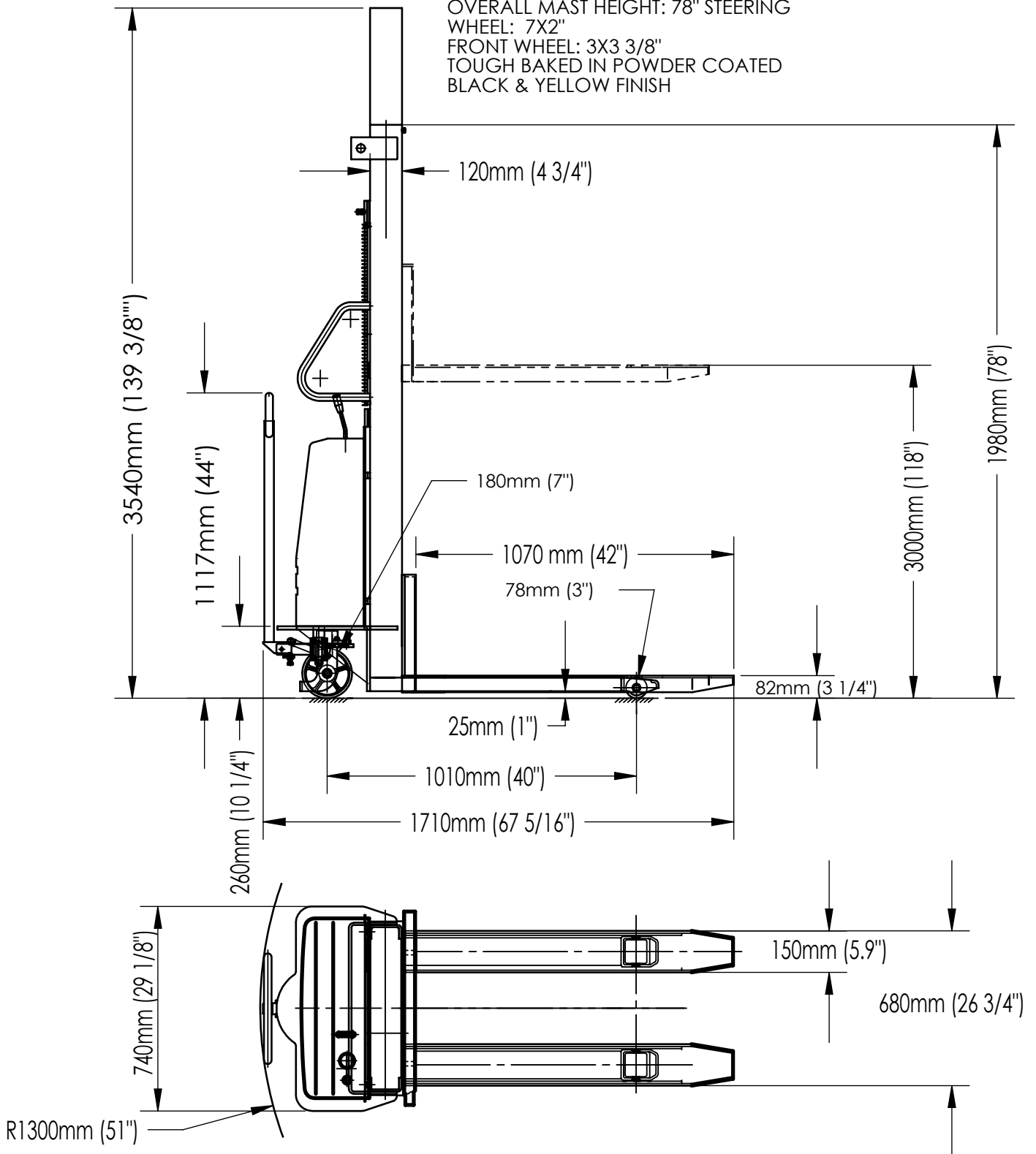
Model # SMS-09-V46-SL-118-AA  
 Capacity (UDL): 2,000 lbs. up to 63"  
 Capacity (UDL): 1,500 lbs. 63" to 118"  
 Lift height: 118"  
 Lowered height: 1 3/8"  
 Adjustable Forks & adjustable legs  
 Overall mast height: 141 3/8"

Mast: Double  
 Safety Shield: Yes  
 Steering wheel: 7 x 2"  
 Front wheel: 4x 2.91"  
 Lift Motor: DC12V/1.8Kw  
 Battery: 1x12V/140Ah



**STANDARD FEATURES**

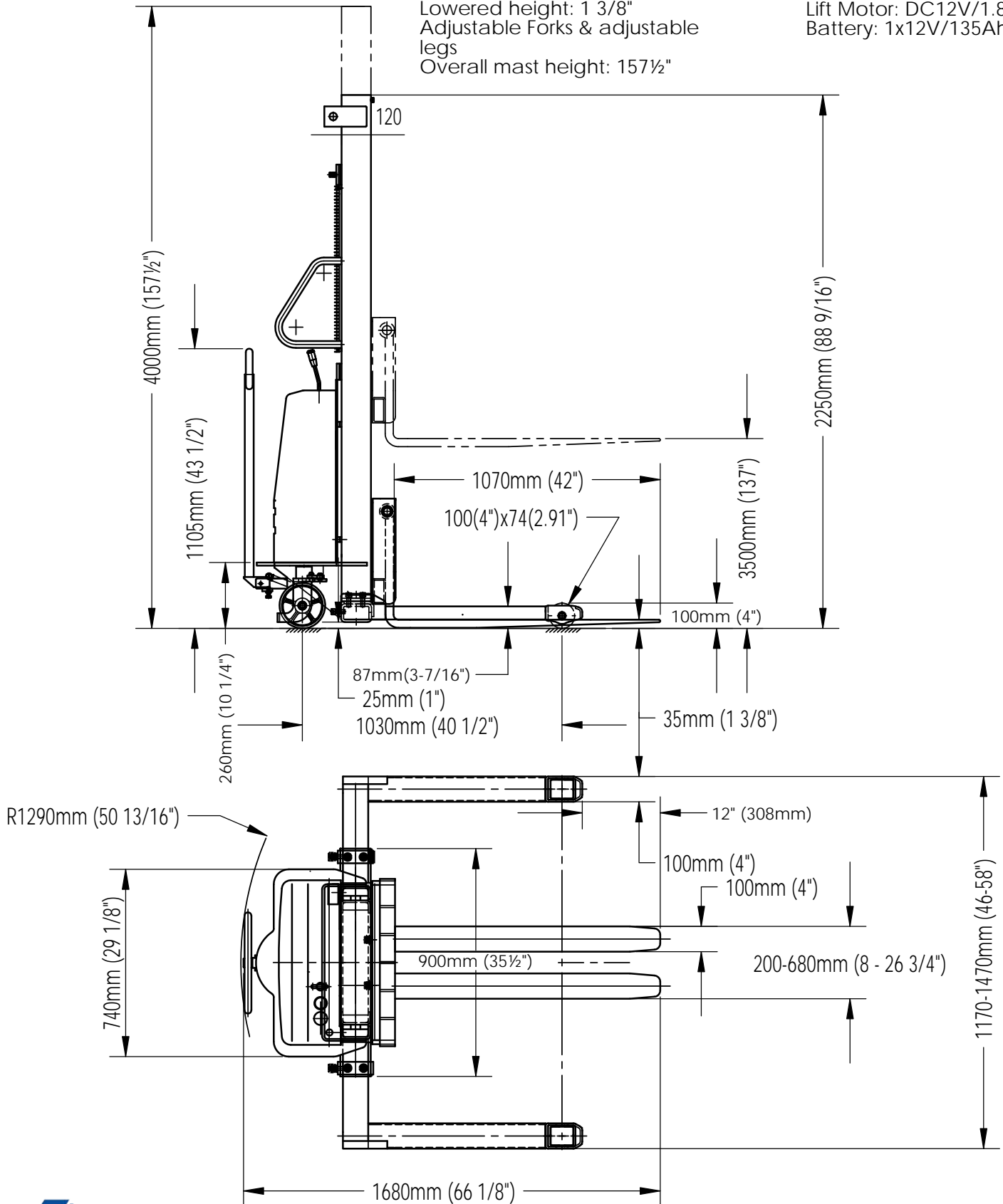
MODEL NUMBER: SMS-09-V46-SL-118-FF  
 CAPACITY (UDL): 2,000 LBS UP TO 62"  
 CAPACITY (UDL): 1,500 LBS UP TO 118"  
 LIFT HEIGHT: 118"  
 LOWERED HEIGHT: 3 1/4"  
 FIXED FORKS OVER SUPPORT LEGS  
 MAST: DOUBLE  
 SAFETY SHIELD: YES  
 OVERALL MAST HEIGHT: 78" STEERING  
 WHEEL: 7X2"  
 FRONT WHEEL: 3X3 3/8"  
 TOUGH BAKED IN POWDER COATED  
 BLACK & YELLOW FINISH

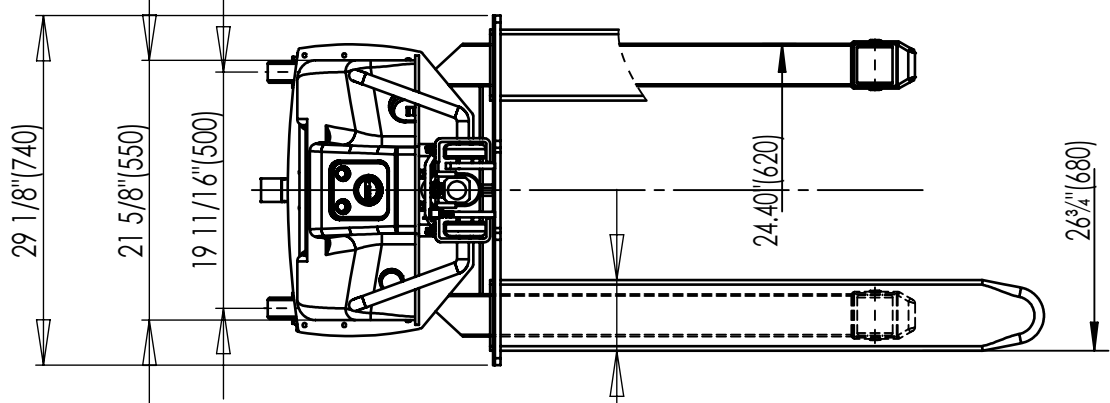
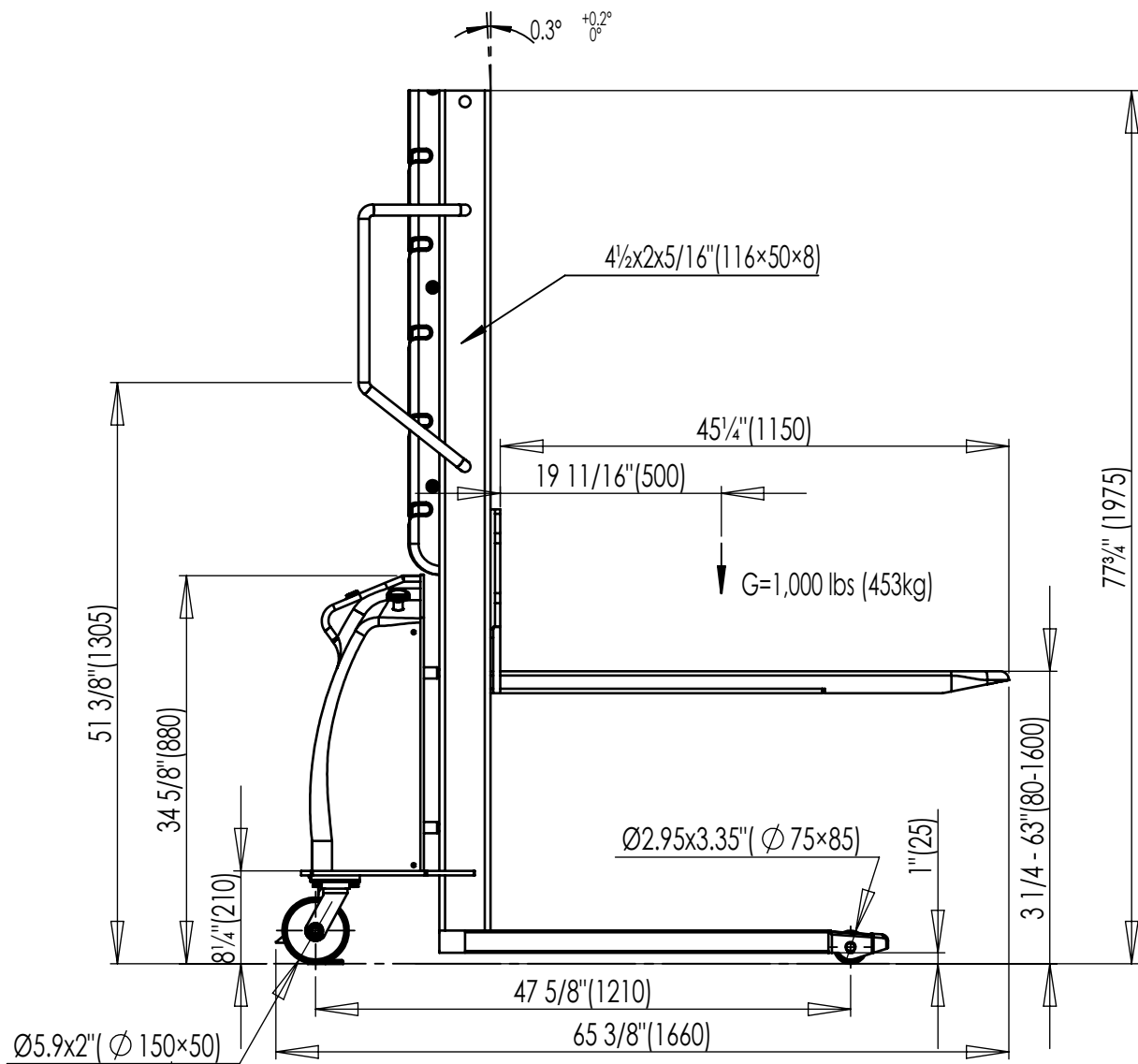


## Specifications

Model # SMS-09-V46-SL-137-AA  
 Capacity (UDL): 2,000 lbs. up to 62"  
 Capacity (UDL): 1,500 lbs. 62" to 118"  
 Capacity (UDL): 1,000 lbs. 118" to 137"  
 Lift height: 137"  
 Lowered height: 1 3/8"  
 Adjustable Forks & adjustable legs  
 Overall mast height: 157 1/2"

Mast: Double  
 Safety Shield: Yes  
 Steering wheel: 7 x 2"  
 Front wheel: 4x 2.91"  
 Lift Motor: DC12V/1.8Kw  
 Battery: 1x12V/135Ah

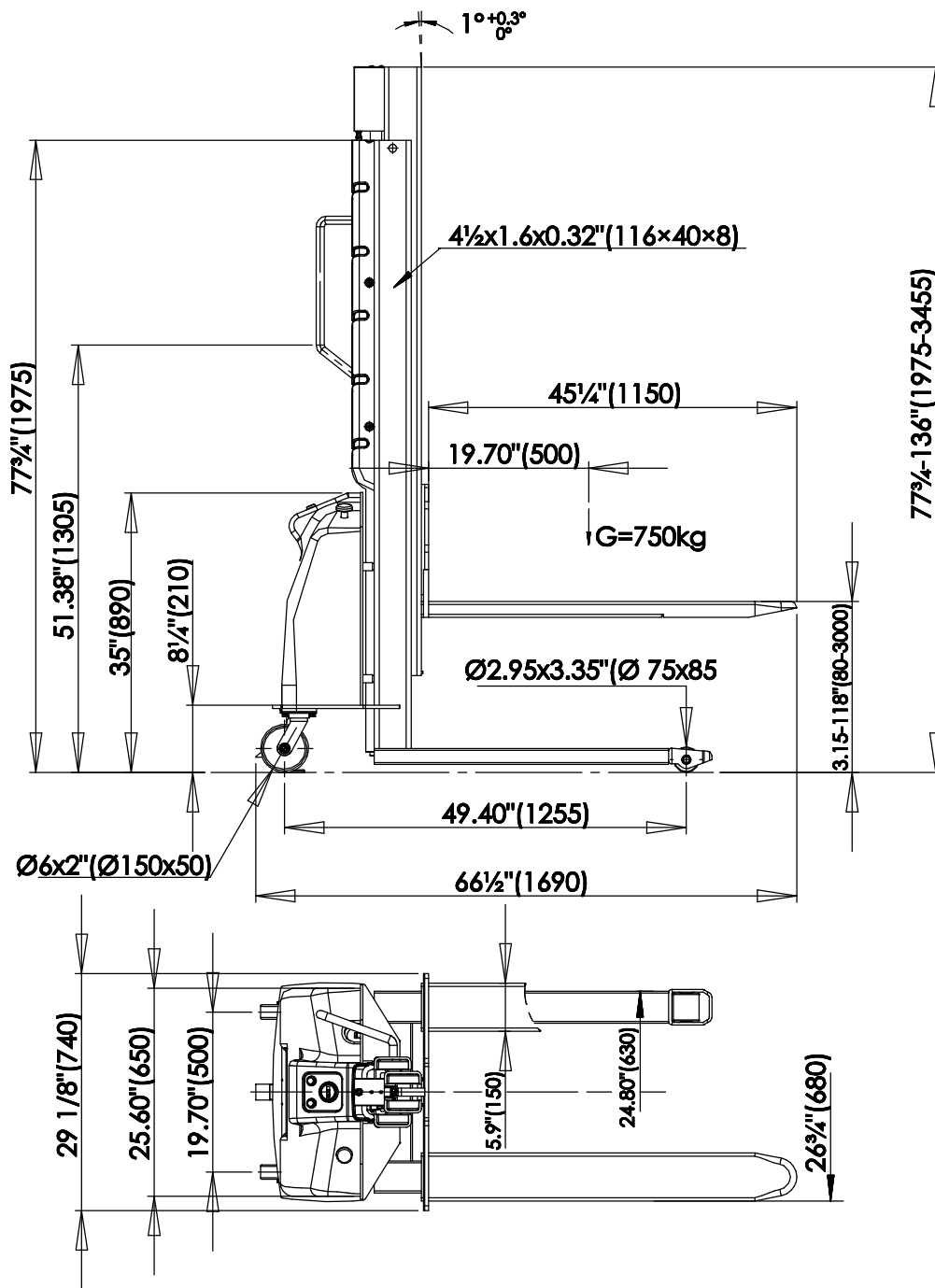




**STANDARD FEATURES**

- MODEL #: SMS-09-V46-SLNM-63-FF
- CAPACITY: 1000 lbs (450 kg)
- LOWERED HEIGHT: 3 1/4" (80mm)
- LIFT MOTOR: DC 12V/1.3 Kw
- BATTERY: 12V
- BATTERY CHARGER: 12V/5amp
- LIFT HEIGHT: 63"
- SINGLE MAST
- TOUGH BAKED IN POWDER COATED BLACK & YELLOW FINISH





## STANDARD FEATURES

- MODEL #: SMS-09-V46-SLNM-118-FF
- CAPACITY (UDL) 0-63": 1,500 lbs (680 kg)
- CAPACITY (UDL) 63-118": 1,000 lbs (450 kg)
- LIFT HEIGHT: 118" (3000mm)
- LOWERED HEIGHT: 3.15" (80mm)
- FIXED FORKS OVER FIXED LEGS
- OVERALL MAST HEIGHT 77 3/4"
- LIFT MOTOR: DC 12V/1.3 Kw
- BATTERY CHARGER: 12V/6amp
- RAISE TIME LOADED: 5.9"/s
- RAISE TIME UNLOADED: 2.95"/s
- DOWN TIME LOADED: 4"/s
- DOWN TIME UNLOADED: 3.15"/s
- TOUGH BAKED IN POWDER COATED
- BLACK & YELLOW FINISH

