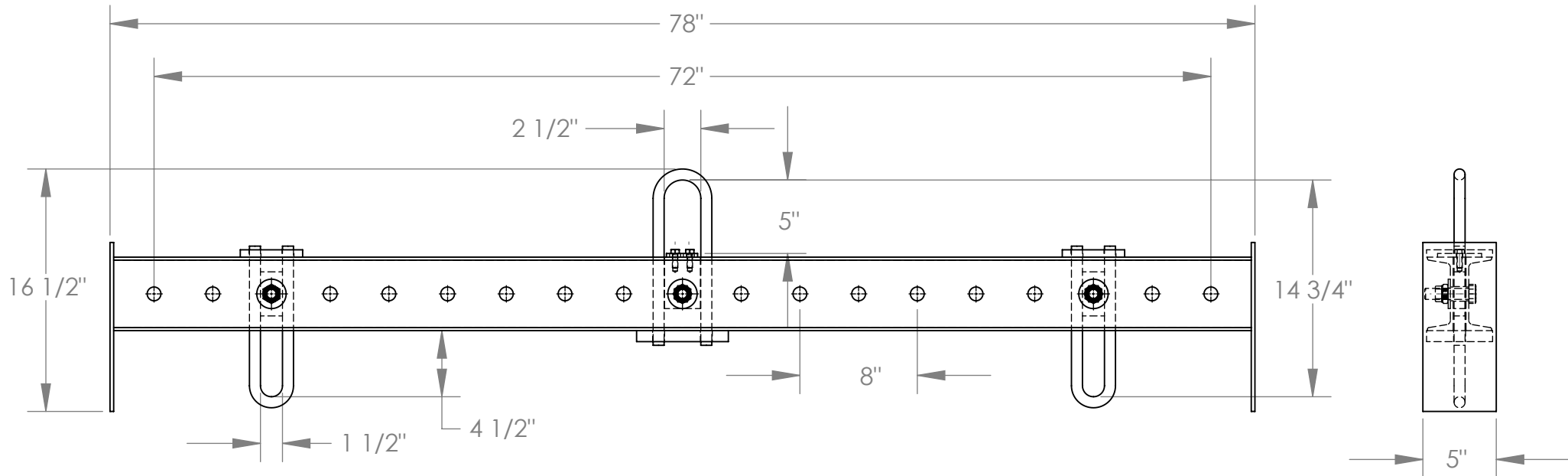


# Adjustable Spreader Beam Technical Drawings

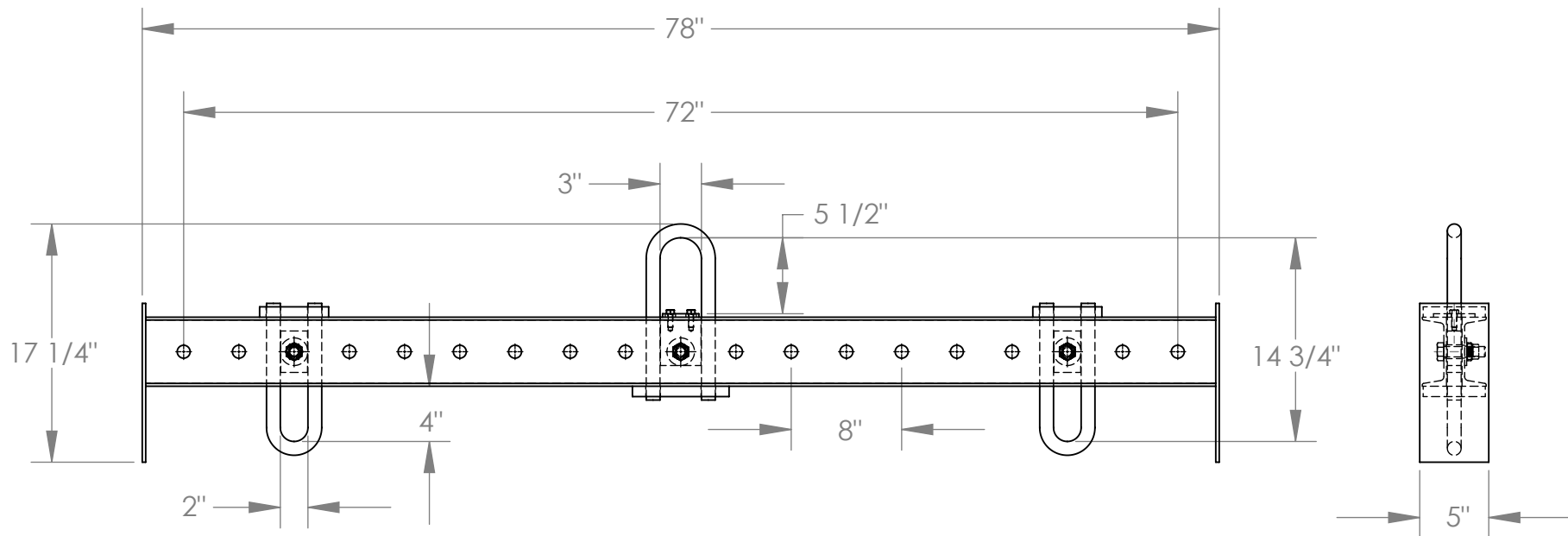
## SMS-09-V46-SBM



### STANDARD FEATURES

MODEL NUMBER IS SMS-09-V46-SBM-25  
OVERALL WIDTH IS 5"  
OVERALL HEIGHT IS 16 1/2" OVERALL  
LENGTH IS 78"  
USABLE UPPER BAIL IS 2 1/2" x 5" USABLE  
LOWER BAIL IS 1 1/2" x 4 1/2" MINIMUM  
SPREAD IS 8"  
MAXIMUM SPREAD IS 72" HEADROOM IS  
14 3/4"  
CAPACITY IS 2,500 LBS

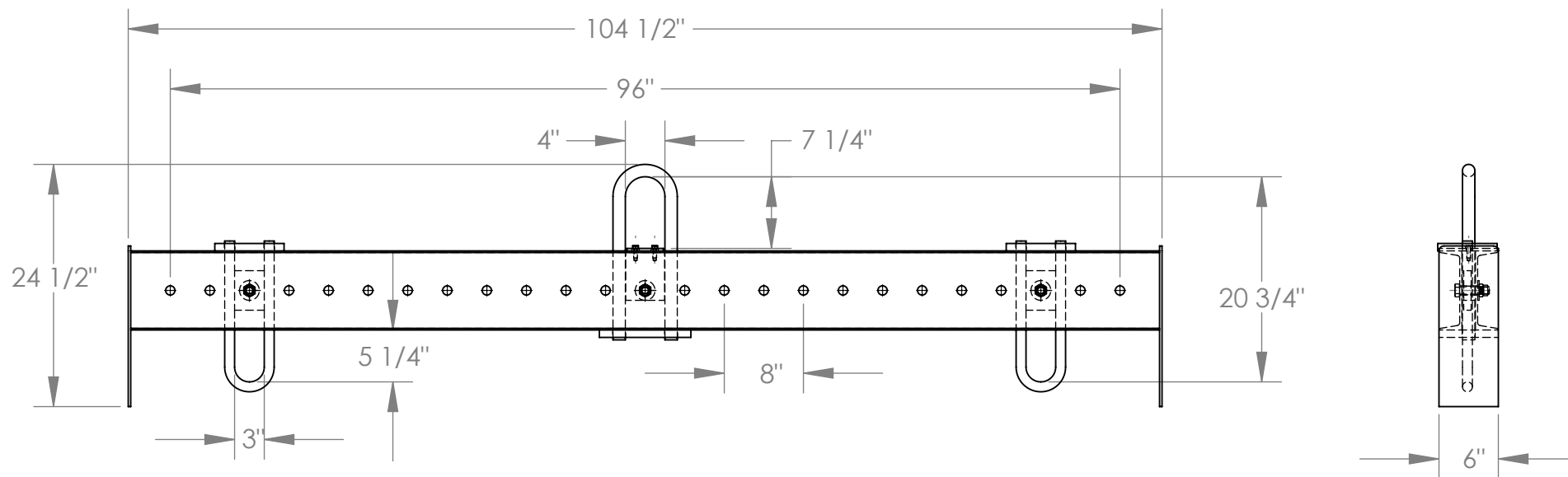




## STANDARD FEATURES

MODEL NUMBER IS SMS-09-V46-SBM-40  
 OVERALL WIDTH IS 5" OVERALL HEIGHT IS 17 1/4"  
 OVERALL LENGTH IS 78"  
 USABLE UPPER BAIL IS 3" x 5 1/2" USABLE LOWER BAIL IS 2" x 4" MINIMUM SPREAD IS 8"  
 MAXIMUM SPREAD IS 72" CAPACITY IS 4,000 LBS





## STANDARD FEATURES

MODEL NUMBER IS SMS-09-V46-SBM-80 OVERALL WIDTH IS 6"  
 OVERALL HEIGHT IS 24 1/2"  
 OVERALL LENGTH IS 104 1/2"  
 USABLE UPPER BAIL IS 4" x 7 1/4"  
 USABLE LOWER BAIL IS 3" x 5 1/4"  
 MINIMUM SPREAD IS 8"  
 MAXIMUM SPREAD IS 96"  
 HEADROOM IS 20 3/4"  
 MAX CAPACITY IS 8,000 LBS

