

# Heavy Duty Metal Shelving Specification Sheet

## SMS-08-V39-SCH

### PROVIDES TWICE THE CAPACITY OF STANDARD POST SHELVING

High capacity Shelving is ideal when additional strength is required for any shelving installation. It is also recommended for multi-level high-rise applications.

Fabricated from 14 gauge cold rolled steel and formed into a unique tubular design to provide more than twice the load capacity compared to standard posts.



ALL SHELVES  
BACK SWAY BRACES  
BACK PANELS

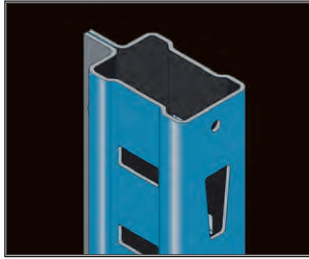
711  
LIGHT GRAY (PL)

ALL POSTS  
SIDE SWAY BRACES  
SIDE PANELS

707  
MARINE BLUE (MB)



## COMBINE WITH STANDARD HI-TECH SHELVING COMPONENTS



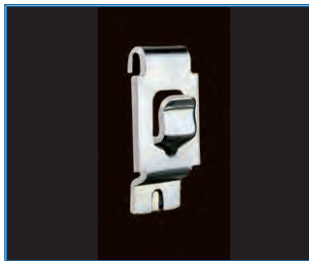
### H-POST

- Designed for high-density applications
- More than twice the capacity of standard posts
- Used at front and back
- Used with standard Hi-Tech components



### BOX FORMED SHELVES

- Tubular welded box beam front and rear for maximum strength
- Exclusive triple bend side flanges for added strength
- Lapped and welded corners
- Top of shelf is punched to accept shelf dividers



### ONE PIECE SHELF CLIP

- Each shelf requires four of these sturdy and compact clips
- Clips key firmly into post slots to hold shelves securely in place
- Also fits Beaded Front, Angle Back Posts and T-Posts
- Provides independent shelf positioning on 1-1/2" centers
- Non-Intrusive clip sits flush with inside edge of front posts



### BACK AND SIDE SWAY BRACES

- Standard for open units only
- 11 gauge back and side sway braces create a rigid structure
- Special triple point brace clip provides a strong rigid anchor point for back sway braces



### BACK AND SIDE PANELS

- Standard for closed units only
- Standard stock models include heavy 18 gauge back and side panels for a strong and durable structure
- Multiple panels are used to create full panel height



### FOOT PLATES

- Standard stock units include #5025 standard duty foot plates
- Provide a strong and secure anchoring point



## AVAILABLE IN 7' AND 10' HIGH UNITS



**STARTER UNIT**



**ADDER UNIT**



**5 SHELF UNIT**



**6 SHELF UNIT**



**8 SHELF UNIT**

W	D	H		5-Shelf Unit Cat No.	6-Shelf Unit Cat No.	8-Shelf Unit Cat No.	Shelf Capacity*
<b>Heavy-Duty</b>							
36	18	87	Starter	H5510-1807	H5511-1807	H5513-1807	800*
36	18	87	Adder	AH5510-1807	AH5511-1807	AH5513-1807	800*
36	24	87	Starter	H5510-2407	H5511-2407	H5513-2407	800*
36	24	87	Adder	AH5510-2407	AH5511-2407	AH5513-2407	800*
36	18	123	Starter	H5510-1810	H5511-1810	H5513-1810	800*
36	18	123	Adder	AH5510-1810	AH5511-1810	AH5513-1810	800*
36	24	123	Starter	H5510-2410	H5511-2410	H5513-2410	800*
36	24	123	Adder	AH5510-2410	AH5511-2410	AH5513-2410	800*
48	18	87	Starter	H5710-1807	H5711-1807	H5713-1807	450*
48	18	87	Adder	AH5710-1807	AH5711-1807	AH5713-1807	450*
48	24	87	Starter	H5710-2407	H5711-2407	H5713-2407	500*
48	24	87	Adder	AH5710-2407	AH5711-2407	AH5713-2407	500*
48	18	123	Starter	H5710-1810	H5711-1810	H5713-1810	450*
48	18	123	Adder	AH5710-1810	AH5711-1810	AH5713-1810	450*
48	24	123	Starter	H5710-2410	H5711-2410	H5713-2410	500*
48	24	123	Adder	AH5710-2410	AH5711-2410	AH5713-2410	500*
<b>Extra Heavy-Duty Duty</b>							
36	18	87	Starter	H7510-1807	H7511-1807	H7513-1807	1200*
36	18	87	Adder	AH7510-1807	AH7511-1807	AH7513-1807	1200*
36	24	87	Starter	H7510-2407	H7511-2407	H7513-2407	1250*
36	24	87	Adder	AH7510-2407	AH7511-2407	AH7513-2407	1250*
36	18	123	Starter	H7510-1810	H7511-1810	H7513-1810	1200*
36	18	123	Adder	AH7510-1810	AH7511-1810	AH7513-1810	1200*
36	24	123	Starter	H7510-2410	H7511-2410	H7513-2410	1250*
36	24	123	Adder	AH7510-2410	AH7511-2410	AH7513-2410	1250*
48	18	87	Starter	H7710-1807	H7711-1807	H7713-1807	900*
48	18	87	Adder	AH7710-1807	AH7711-1807	AH7713-1807	900*
48	24	87	Starter	H7710-2407	H7711-2407	H7713-2407	900*
48	24	87	Adder	AH7710-2407	AH7711-2407	AH7713-2407	900*
48	18	123	Starter	H7710-1810	H7711-1810	H7713-1810	900*
48	18	123	Adder	AH7710-1810	AH7711-1810	AH7713-1810	900*
48	24	123	Starter	H7710-2410	H7711-2410	H7713-2410	900*
48	24	123	Adder	AH7710-2410	AH7711-2410	AH7713-2410	900*
<b>Additional Shelves</b>				<b>Heavy-Duty Cat No.</b>	<b>Extra Heavy-Duty Cat No.</b>		
36	18			5138-3618PL	5139-3618PL	See Above	
36	24			5138-3624PL	5139-3624PL	See Above	
48	18			5138-4818PL	5139-4818PL	See Above	
48	24			5138-4824PL	5139-4824PL	See Above	

\* Shelf capacity based on a factor of 1.65

**Color:** All posts, side sway braces, side panels are 707 Marine Blue.  
All shelves, back sway braces, back panels are 711 Light Gray

**OPEN UNITS:** Starter units include four posts, one back sway brace assembly, two side sway brace assemblies, foot plates and 5-8 shelves.  
Adder units include two posts, one back sway brace assembly, one side sway brace assembly, foot plates and 5-8 shelves.



ALL SHELVES BACK SWAY BRACES BACK PANELS
711 LIGHT GRAY (PL)

ALL POSTS SIDE SWAY BRACES SIDE PANELS
707 MARINE BLUE (MB)

