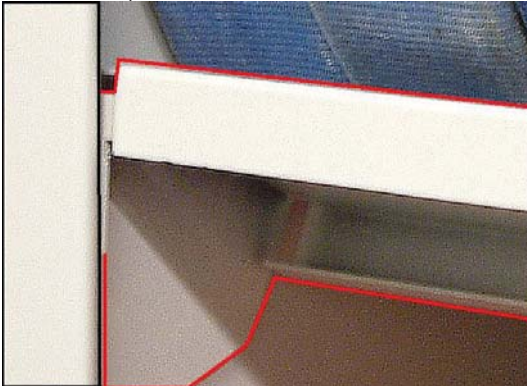


Fire Hose Rack -- Installation Instructions

Instructions:

Step 1: Layout rack uprights with the key holes facing in the correct direction (small notch facing down).

Step 2: Starting from the bottom, place a cradle in the front and back (2 per shelf needed) in keyholes 3 & 4 (counting up from the bottom).



Upright (outlined in black)
Cradle (outlined in red)

Step 3: Tap down cradles with a rubber mallet to set the support securely in place.

Step 4: The second set of cradles will occupy keyholes 19 & 20 (counting up from the bottom). Repeat 'Step 3' to secure cradle.

Step 6: The third set of cradles will occupy keyholes 35 & 36 (counting up from the bottom). Repeat 'Step 3' to secure cradle.

Step 7: Place regular shelf support (no cradle) in the top 2 keyholes of the upright. Secure supports and then place canopy shelf in place on top (dust cover).



Notes:

A minimum of 25 inches is needed for to maintain correct spacing between hose rests.

The supports (two: one front and one back) are manufactured to cradle the coiled fire hoses.

