

# GENERAL NOTES

## SUSTAINABILITY

- Particleboard and MDF fabricated from recycled wood waste material
- Cardboard packaging made from recycled materials
- Unusable pallets are recycled
- All aluminum scrap is recycled
- All adhesives used are water-based
- Products meet low VOC standards
- Powder coat paint is used on all metal surfaces
- Greenguard Gold Certified to provide safe, quality, environmentally friendly workspaces.
- FSC and OSHPD certified components are also available

## CONSTRUCTION

- Cabinets are constructed of 3/4" thick industrial grade 40-50lb substrate, double-faced melamine
- All exposed edges are covered with 2mm PVC edge banding
- All panels are connected with hafele mini-fix cam hidden fastener system
- All cabinets are rail mounted for ease of install
- Work surfaces are constructed of 1 1/16" thick high-pressure laminate

## MODULAR CASEWORK ROOM SEGMENTS

Copyright 2017 Southwest Solutions Group. This material is proprietary and confidential and the disclosure, reproduction (by photocopy, film, blueprint or otherwise) or incorporation into any information retrieval system without first receiving written approval from Southwest Solutions Group is expressly prohibited by law.

Approved By

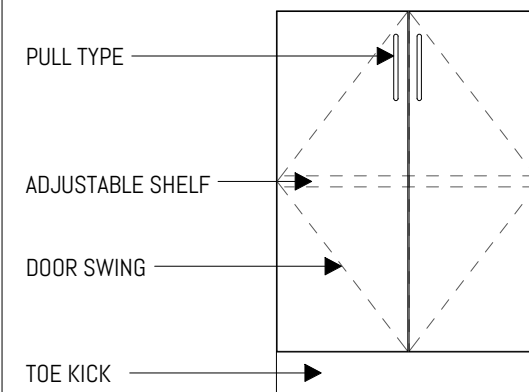
Date

Drawn by DHaynal

Salesperson SSG

Scale 1/2" = 1'-0"

# LEGEND



## FOR MORE INFORMATION

<https://bim.southwestsolutions.com>

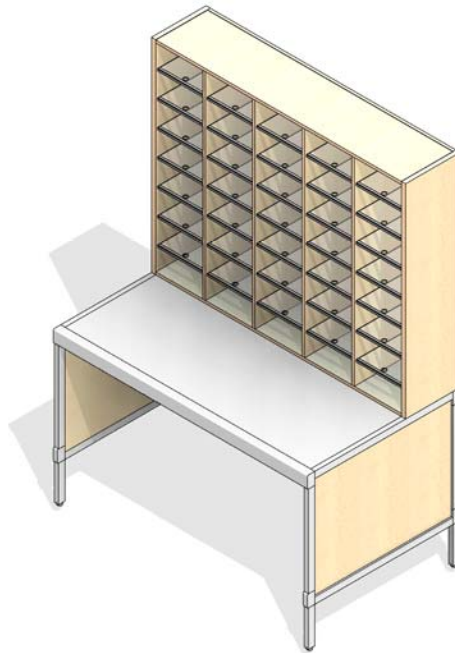
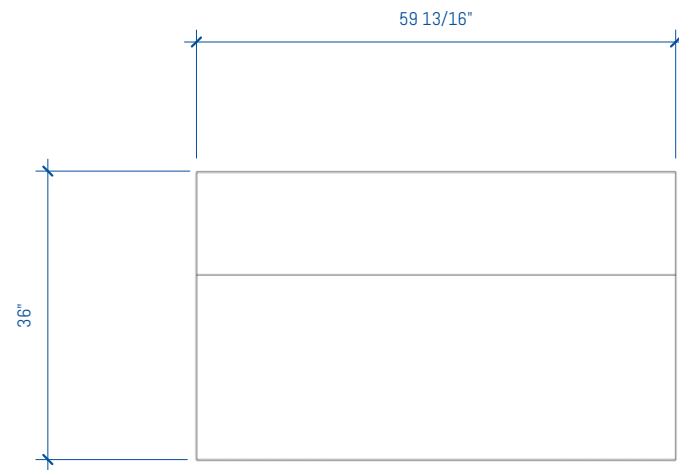
RN	DATE	DESCRIPTION
----	------	-------------

SSG REVISION SCHEDULE

## MAIL ROOM - LAM 5ft - OPTION 1

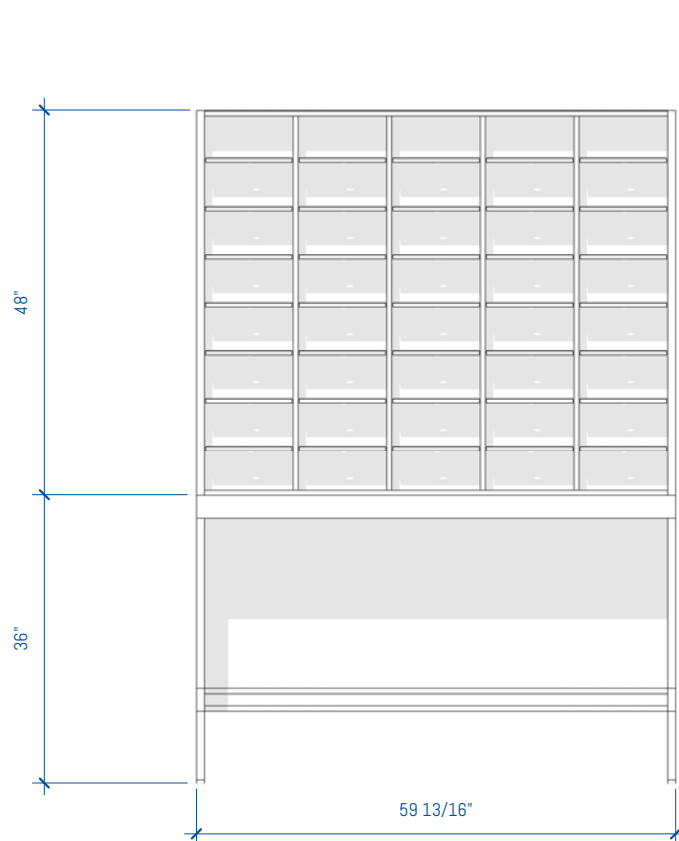
SHEET NUMBER

MR-1 of MR-30

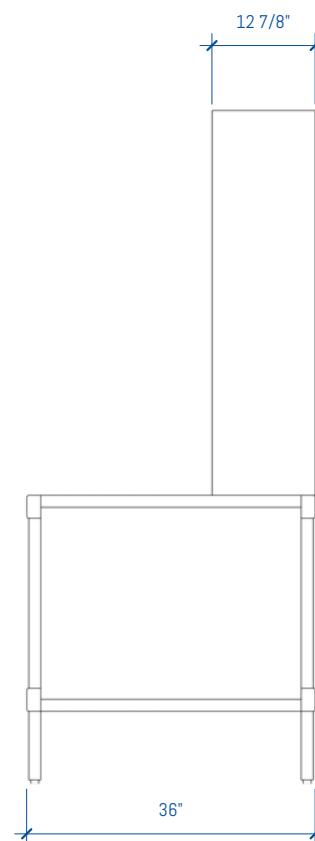


4 MAIL ROOM - LAM 5ft - OPTION 1  
1/2" = 1'-0"

3 MAIL ROOM - LAM 5ft - OPTION 1  
1/2" = 1'-0"



2 MAIL ROOM - LAM 5ft - OPTION 1 - Front  
1/2" = 1'-0"



1 MAIL ROOM - LAM 5ft - OPTION 1 - Side  
1/2" = 1'-0"

# GENERAL NOTES

## SUSTAINABILITY

- Particleboard and MDF fabricated from recycled wood waste material
- Cardboard packaging made from recycled materials
- Unusable pallets are recycled
- All aluminum scrap is recycled
- All adhesives used are water-based
- Products meet low VOC standards
- Powder coat paint is used on all metal surfaces
- Greenguard Gold Certified to provide safe, quality, environmentally friendly workspaces.
- FSC and OSHPD certified components are also available

## CONSTRUCTION

- Cabinets are constructed of 3/4" thick industrial grade 40-50lb substrate, double-faced melamine
- All exposed edges are covered with 2mm PVC edge banding
- All panels are connected with hafele mini-fix cam hidden fastener system
- All cabinets are rail mounted for ease of install
- Work surfaces are constructed of 1 1/16" thick high-pressure laminate

## MODULAR CASEWORK ROOM SEGMENTS

Copyright 2017 Southwest Solutions Group. This material is proprietary and confidential and the disclosure, reproduction (by photocopy, film, blueprint or otherwise) or incorporation into any information retrieval system without first receiving written approval from Southwest Solutions Group is expressly prohibited by law.

Approved By

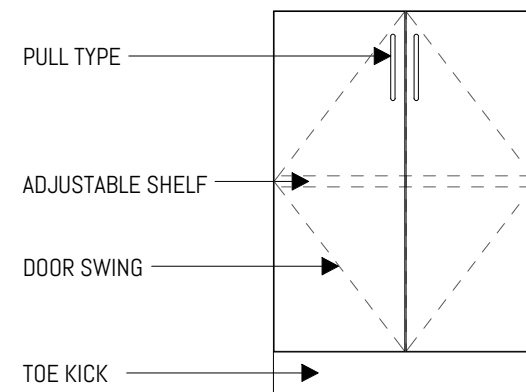
Date

Drawn by DHaynal

Salesperson SSG

Scale 1/2" = 1'-0"

# LEGEND



## FOR MORE INFORMATION

<https://bim.southwestsolutions.com>

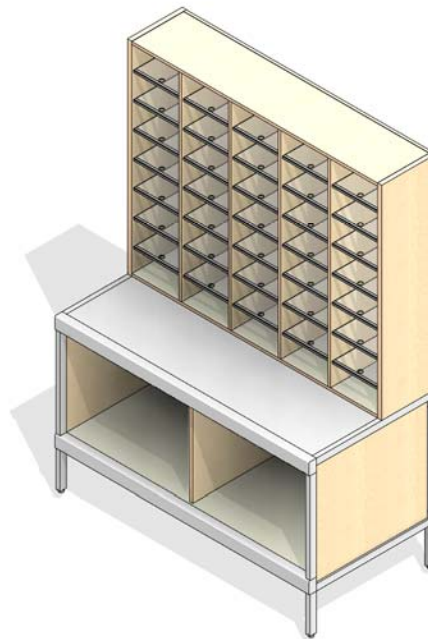
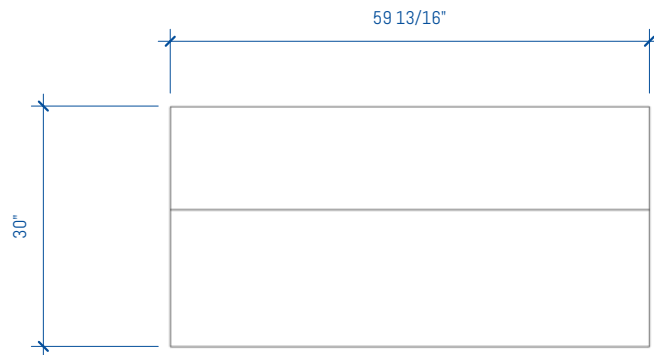
RN	DATE	DESCRIPTION
----	------	-------------

### SSG REVISION SCHEDULE

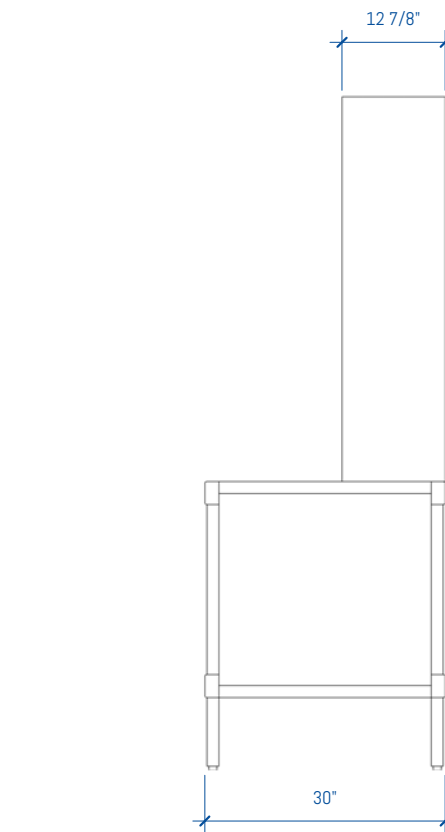
MAIL ROOM - LAM 5ft  
- OPTION 2

SHEET NUMBER

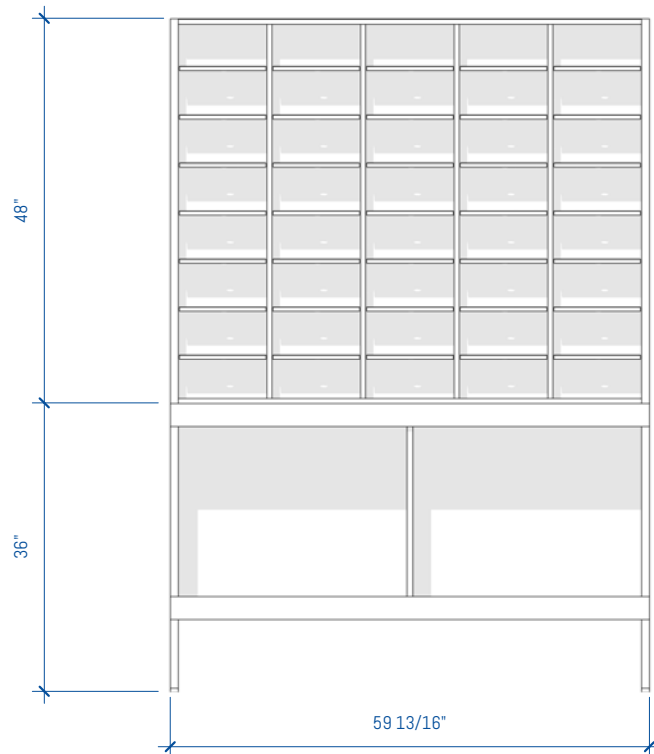
MR-2 of MR-30



3 MAIL ROOM - LAM 5ft - OPTION 2

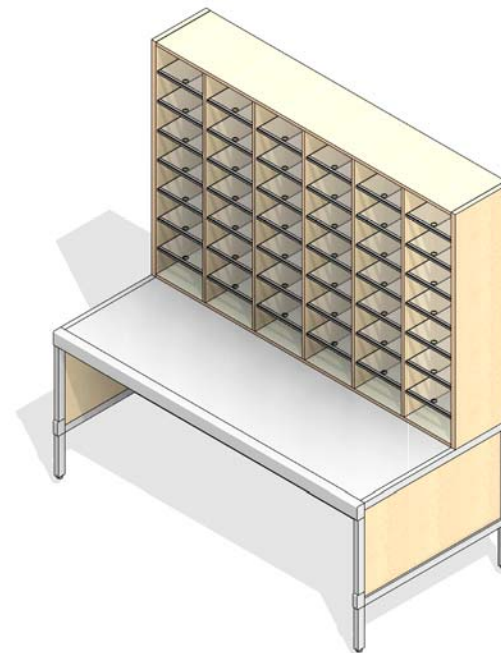
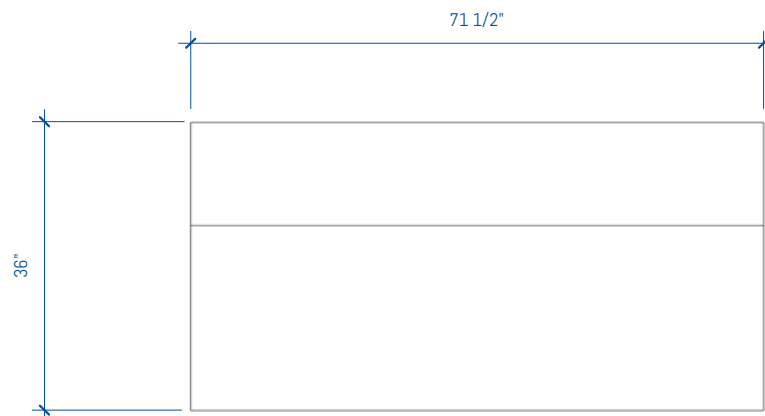


1 MAIL ROOM - LAM 5ft - OPTION 2 - Side  
1/2" = 1'-0"



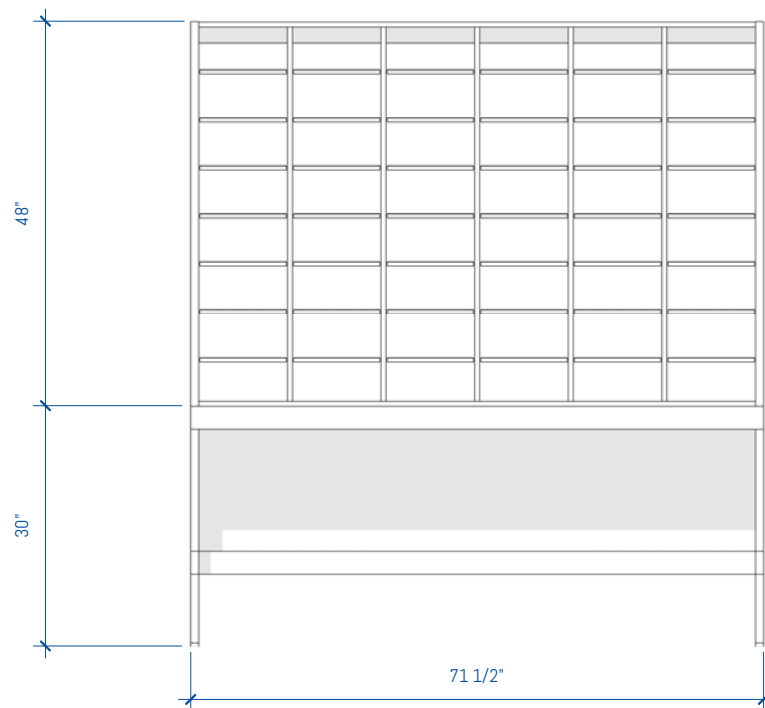
4 MAIL ROOM - LAM 5ft - OPTION 2  
1/2" = 1'-0"

2 MAIL ROOM - LAM 5ft - OPTION 2 - Front  
1/2" = 1'-0"

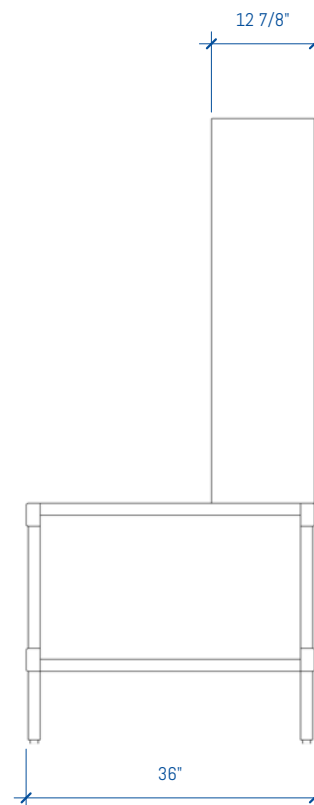


4 MAIL ROOM - LAM 6ft - OPTION 1  
1/2" = 1'-0"

3 MAIL ROOM - LAM 6ft - OPTION 1



2 MAIL ROOM - LAM 6ft - OPTION 1 - Front  
1/2" = 1'-0"



1 MAIL ROOM - LAM 6ft - OPTION 1 - Side  
1/2" = 1'-0"

# GENERAL NOTES

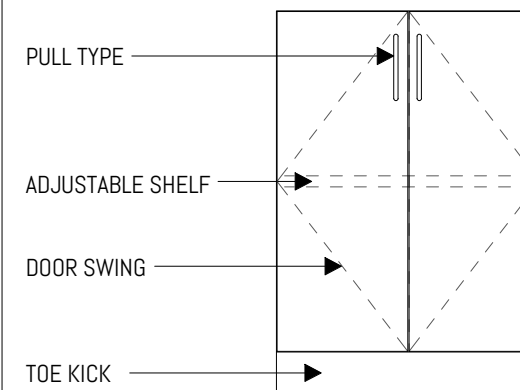
## SUSTAINABILITY

- Particleboard and MDF fabricated from recycled wood waste material
- Cardboard packaging made from recycled materials
- Unusable pallets are recycled
- All aluminum scrap is recycled
- All adhesives used are water-based
- Products meet low VOC standards
- Powder coat paint is used on all metal surfaces
- Greenguard Gold Certified to provide safe, quality, environmentally friendly workspaces.
- FSC and OSHPD certified components are also available

## CONSTRUCTION

- Cabinets are constructed of 3/4" thick industrial grade 40-50lb substrate, double-faced melamine
- All exposed edges are covered with 2mm PVC edge banding
- All panels are connected with hafele mini-fix cam hidden fastener system
- All cabinets are rail mounted for ease of install
- Work surfaces are constructed of 1 1/16" thick high-pressure laminate

# LEGEND



## FOR MORE INFORMATION

<https://bim.southwestsolutions.com>

## MODULAR CASEWORK ROOM SEGMENTS

Copyright 2017 Southwest Solutions Group. This material is proprietary and confidential and the disclosure, reproduction (by photocopy, film, blueprint or otherwise) or incorporation into any information retrieval system without first receiving written approval from Southwest Solutions Group is expressly prohibited by law.

Approved By

Date

Drawn by DHaynal

Salesperson SSG

Scale 1/2" = 1'-0"

RN	DATE	DESCRIPTION
SSG REVISION SCHEDULE		

MAIL ROOM - LAM 6ft  
- OPTION 1

SHEET NUMBER

MR-3 of MR-30

# GENERAL NOTES

## SUSTAINABILITY

- Particleboard and MDF fabricated from recycled wood waste material
- Cardboard packaging made from recycled materials
- Unusable pallets are recycled
- All aluminum scrap is recycled
- All adhesives used are water-based
- Products meet low VOC standards
- Powder coat paint is used on all metal surfaces
- Greenguard Gold Certified to provide safe, quality, environmentally friendly workspaces.
- FSC and OSHPD certified components are also available

## CONSTRUCTION

- Cabinets are constructed of 3/4" thick industrial grade 40-50lb substrate, double-faced melamine
- All exposed edges are covered with 2mm PVC edge banding
- All panels are connected with hafele mini-fix cam hidden fastener system
- All cabinets are rail mounted for ease of install
- Work surfaces are constructed of 1 1/16" thick high-pressure laminate

## MODULAR CASEWORK ROOM SEGMENTS

Copyright 2017 Southwest Solutions Group. This material is proprietary and confidential and the disclosure, reproduction (by photocopy, film, blueprint or otherwise) or incorporation into any information retrieval system without first receiving written approval from Southwest Solutions Group is expressly prohibited by law.

Approved By

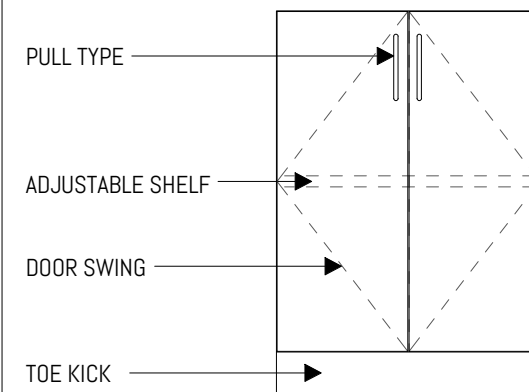
Date

Drawn by DHaynal

Salesperson SSG

Scale 1/2" = 1'-0"

# LEGEND



## FOR MORE INFORMATION

<https://bim.southwestsolutions.com>

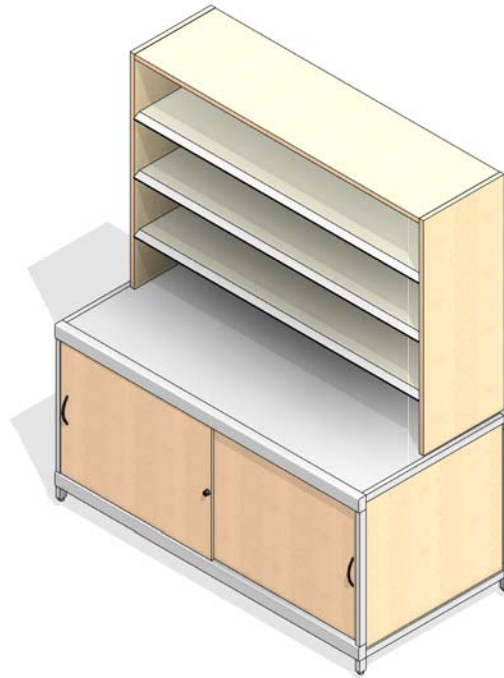
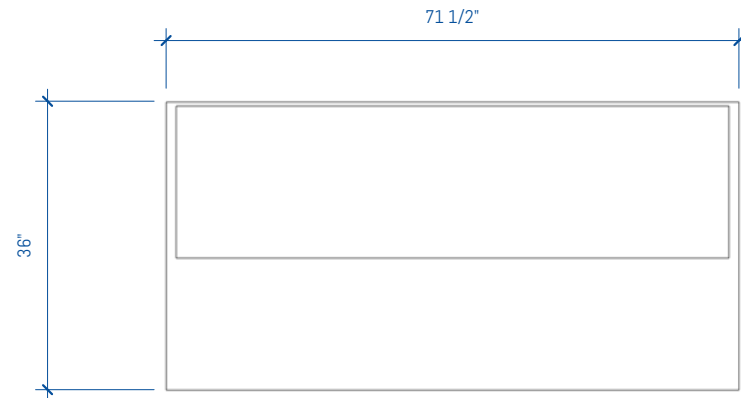
RN	DATE	DESCRIPTION
----	------	-------------

SSG REVISION SCHEDULE

MAIL ROOM - LAM 6ft  
- OPTION 2

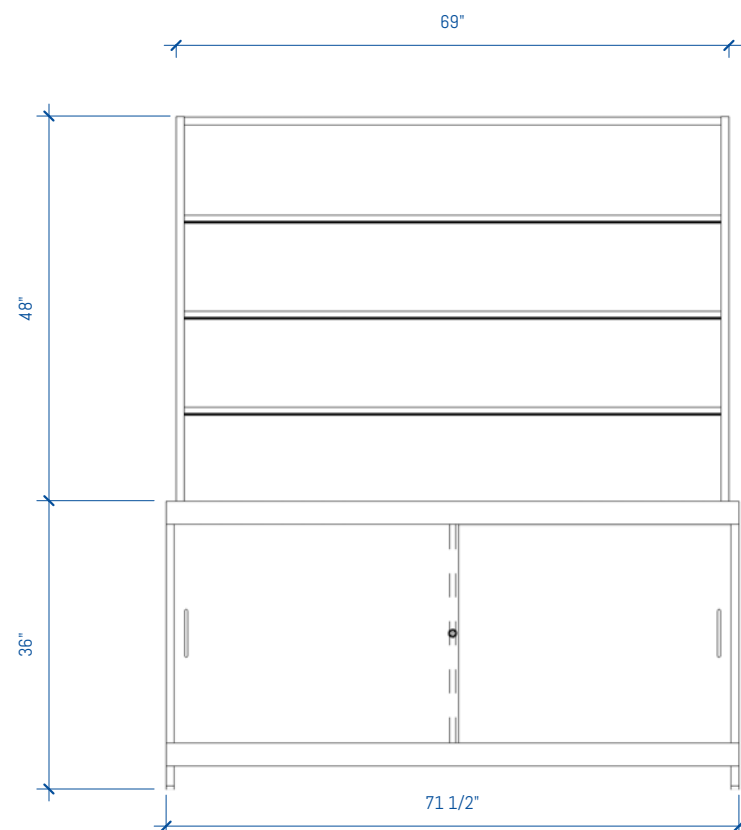
SHEET NUMBER

MR-4 of MR-30

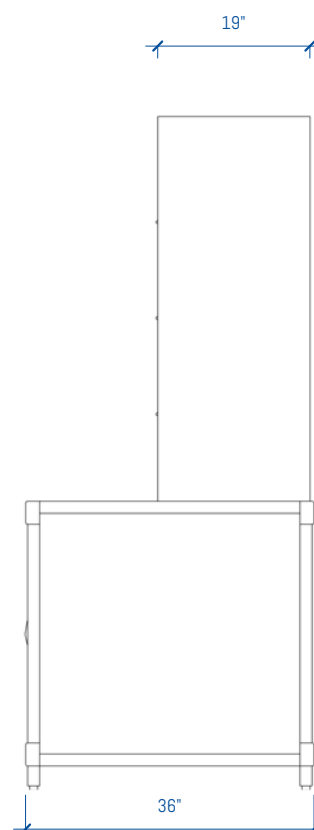


4 MAIL ROOM - LAM 6ft - OPTION 2  
1/2" = 1'-0"

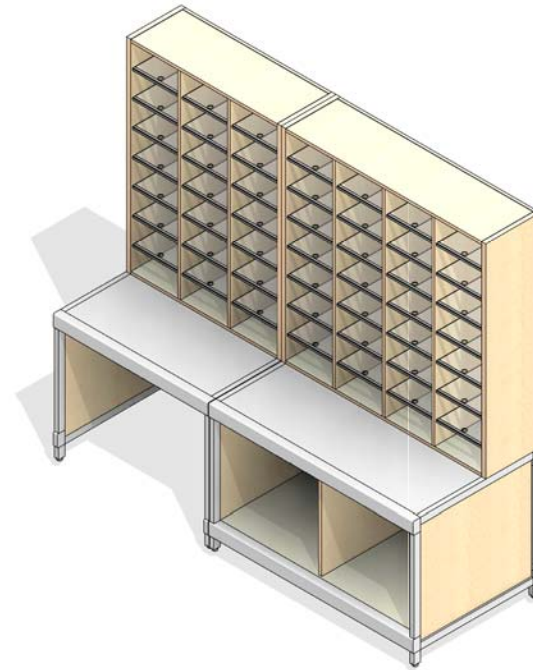
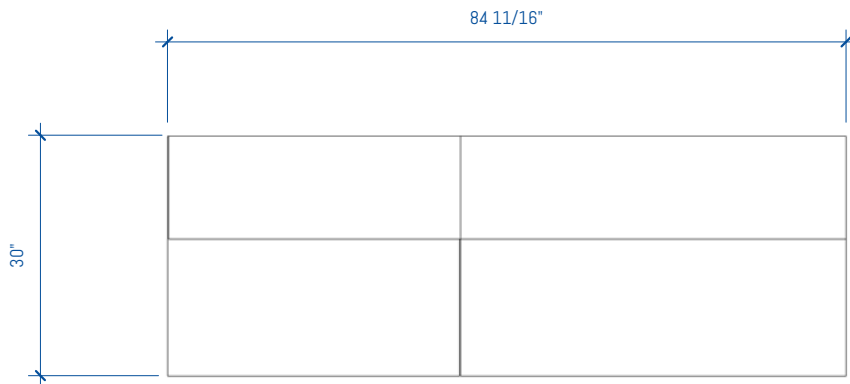
3 MAIL ROOM - LAM 6ft - OPTION 2



2 MAIL ROOM - LAM 6ft - OPTION 2 - Front  
1/2" = 1'-0"

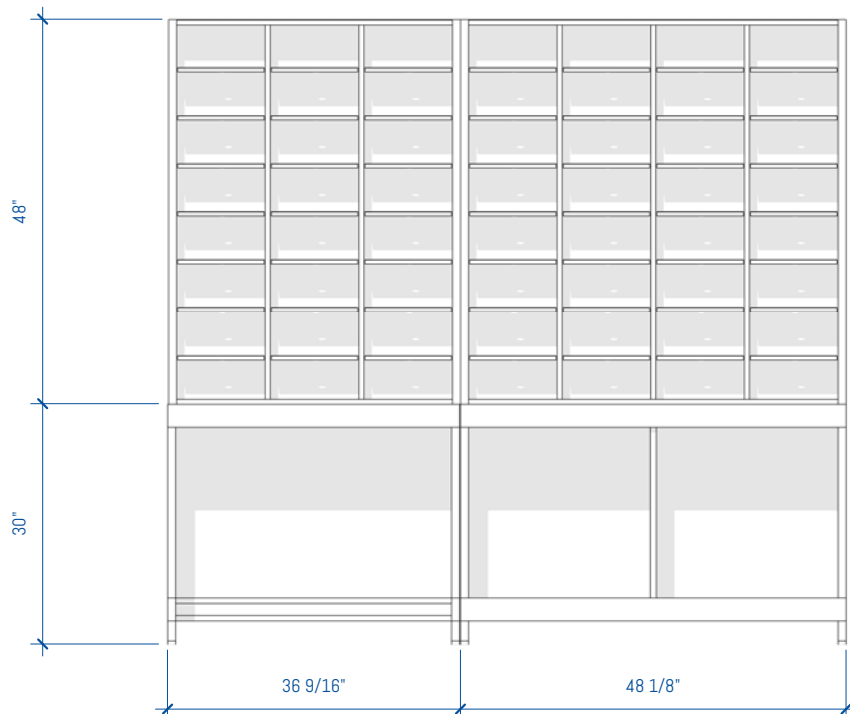


1 MAIL ROOM - LAM 6ft - OPTION 2 - Side  
1/2" = 1'-0"

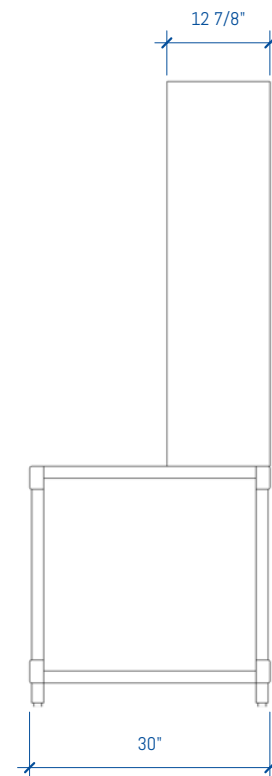


4 MAIL ROOM - LAM 7ft - OPTION 1  
1/2" = 1'-0"

3 MAIL ROOM - LAM 7ft - OPTION 1  
1/2" = 1'-0"



2 MAIL ROOM - LAM 7ft - OPTION 1 - Front  
1/2" = 1'-0"



1 MAIL ROOM - LAM 7ft - OPTION 1 - Side  
1/2" = 1'-0"

# GENERAL NOTES

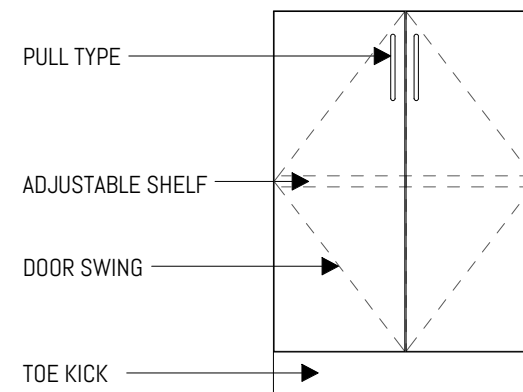
## SUSTAINABILITY

- Particleboard and MDF fabricated from recycled wood waste material
- Cardboard packaging made from recycled materials
- Unusable pallets are recycled
- All aluminum scrap is recycled
- All adhesives used are water-based
- Products meet low VOC standards
- Powder coat paint is used on all metal surfaces
- Greenguard Gold Certified to provide safe, quality, environmentally friendly workspaces.
- FSC and OSHPD certified components are also available

## CONSTRUCTION

- Cabinets are constructed of 3/4" thick industrial grade 40-50lb substrate, double-faced melamine
- All exposed edges are covered with 2mm PVC edge banding
- All panels are connected with hafele mini-fix cam hidden fastener system
- All cabinets are rail mounted for ease of install
- Work surfaces are constructed of 1 1/16" thick high-pressure laminate

# LEGEND



## FOR MORE INFORMATION

<https://bim.southwestsolutions.com>

## MODULAR CASEWORK ROOM SEGMENTS

Copyright 2017 Southwest Solutions Group. This material is proprietary and confidential and the disclosure, reproduction (by photocopy, film, blueprint or otherwise) or incorporation into any information retrieval system without first receiving written approval from Southwest Solutions Group is expressly prohibited by law.

Approved By

Date

Drawn by DHaynal

Salesperson SSG

Scale 1/2" = 1'-0"

RN	DATE	DESCRIPTION
----	------	-------------

SSG REVISION SCHEDULE

MAIL ROOM - LAM 7ft  
- OPTION 1

SHEET NUMBER

MR-5 of MR-30



# GENERAL NOTES

## SUSTAINABILITY

- Particleboard and MDF fabricated from recycled wood waste material
- Cardboard packaging made from recycled materials
- Unusable pallets are recycled
- All aluminum scrap is recycled
- All adhesives used are water-based
- Products meet low VOC standards
- Powder coat paint is used on all metal surfaces
- Greenguard Gold Certified to provide safe, quality, environmentally friendly workspaces.
- FSC and OSHPD certified components are also available

## CONSTRUCTION

- Cabinets are constructed of 3/4" thick industrial grade 40-50lb substrate, double-faced melamine
- All exposed edges are covered with 2mm PVC edge banding
- All panels are connected with hafele mini-fix cam hidden fastener system
- All cabinets are rail mounted for ease of install
- Work surfaces are constructed of 1 1/16" thick high-pressure laminate

## MODULAR CASEWORK ROOM SEGMENTS

Copyright 2017 Southwest Solutions Group. This material is proprietary and confidential and the disclosure, reproduction (by photocopy, film, blueprint or otherwise) or incorporation into any information retrieval system without first receiving written approval from Southwest Solutions Group is expressly prohibited by law.

Approved By

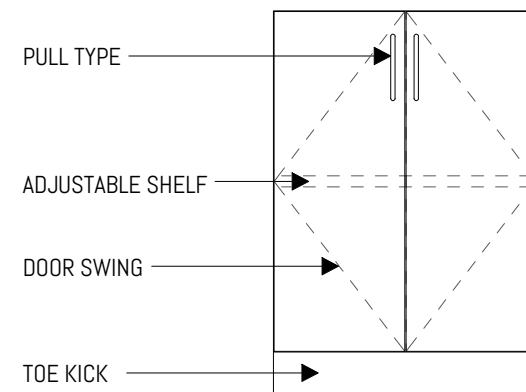
Date

Drawn by **DHaynal**

Salesperson **SSG**

Scale **1/2" = 1'-0"**

# LEGEND



## FOR MORE INFORMATION

<https://bim.southwestsolutions.com>

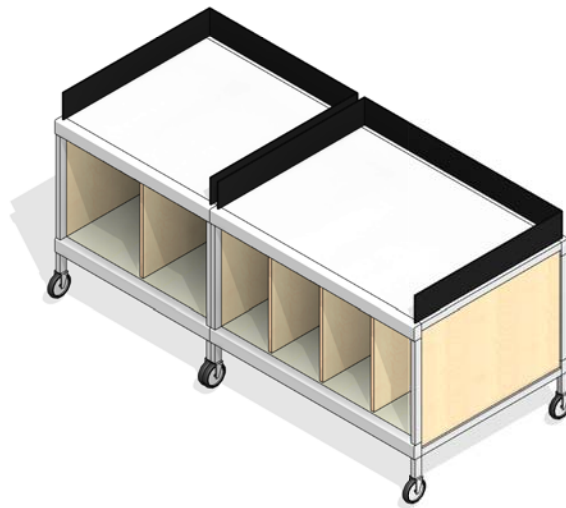
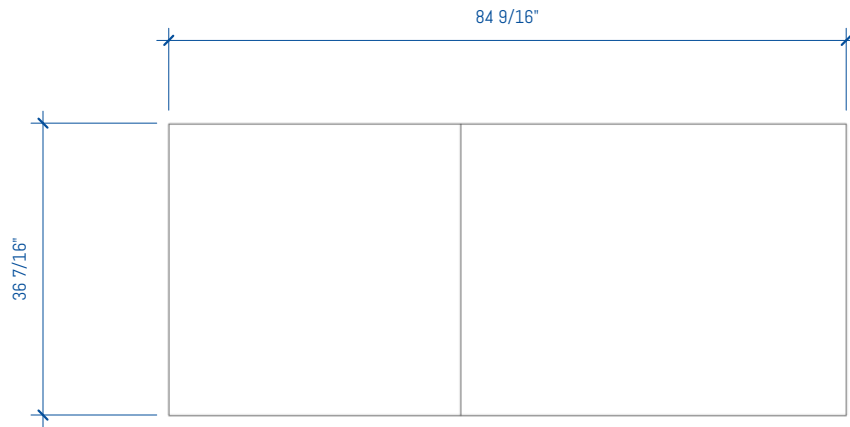
RN	DATE	DESCRIPTION
----	------	-------------

**SSG REVISION SCHEDULE**

**MAIL ROOM - LAM 7ft  
- OPTION 2**

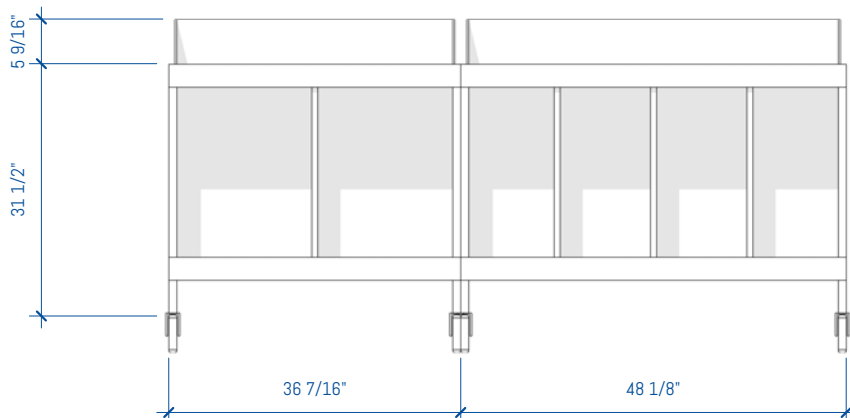
SHEET NUMBER

**MR-6 of MR-30**

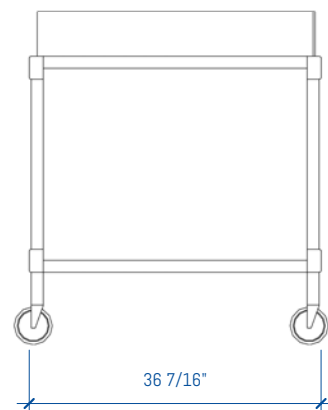


3 MAIL ROOM - LAM 7ft - OPTION 2

4 MAIL ROOM - LAM 7ft - OPTION 2  
1/2" = 1'-0"



2 MAIL ROOM - LAM 7ft - OPTION 2 - Front  
1/2" = 1'-0"



1 MAIL ROOM - LAM 7ft - OPTION 2 - Side  
1/2" = 1'-0"

# GENERAL NOTES

## SUSTAINABILITY

- Particleboard and MDF fabricated from recycled wood waste material
- Cardboard packaging made from recycled materials
- Unusable pallets are recycled
- All aluminum scrap is recycled
- All adhesives used are water-based
- Products meet low VOC standards
- Powder coat paint is used on all metal surfaces
- Greenguard Gold Certified to provide safe, quality, environmentally friendly workspaces.
- FSC and OSHPD certified components are also available

## CONSTRUCTION

- Cabinets are constructed of 3/4" thick industrial grade 40-50lb substrate, double-faced melamine
- All exposed edges are covered with 2mm PVC edge banding
- All panels are connected with hafele mini-fix cam hidden fastener system
- All cabinets are rail mounted for ease of install
- Work surfaces are constructed of 1 1/16" thick high-pressure laminate

## MODULAR CASEWORK ROOM SEGMENTS

Copyright 2017 Southwest Solutions Group. This material is proprietary and confidential and the disclosure, reproduction (by photocopy, film, blueprint or otherwise) or incorporation into any information retrieval system without first receiving written approval from Southwest Solutions Group is expressly prohibited by law.

Approved By

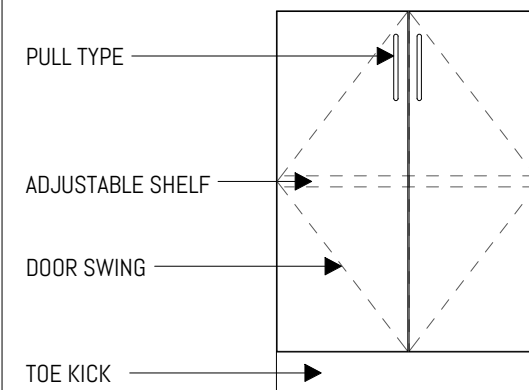
Date

Drawn by DHaynal

Salesperson SSG

Scale 1/2" = 1'-0"

# LEGEND



## FOR MORE INFORMATION

<https://bim.southwestsolutions.com>

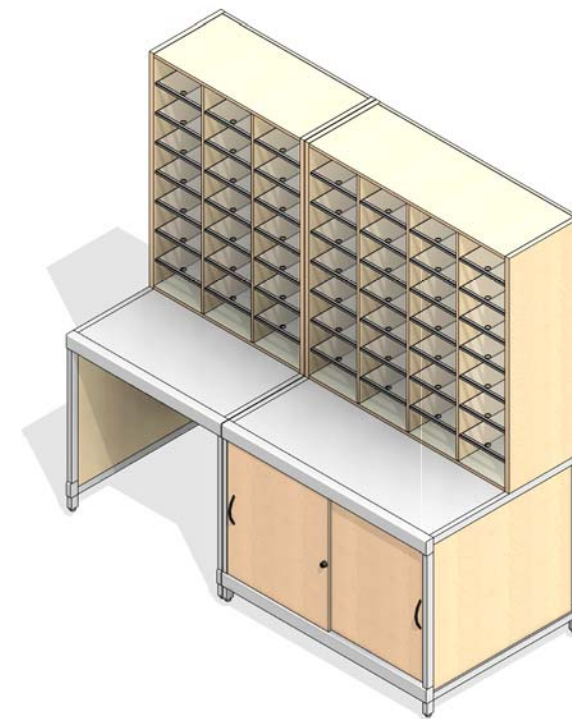
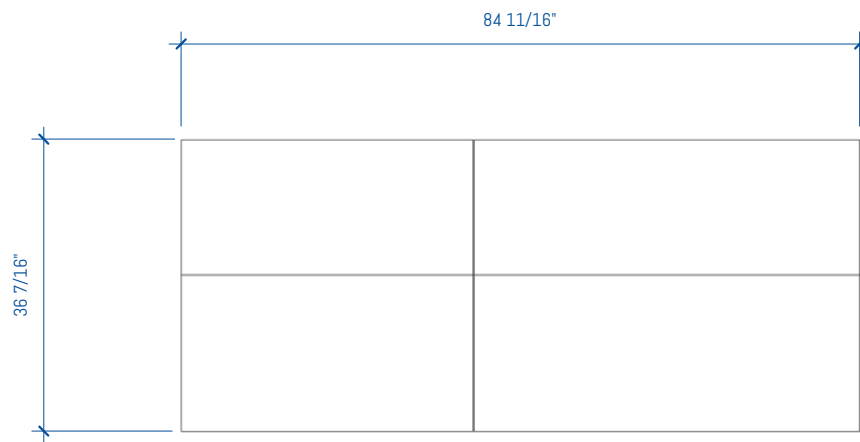
RN	DATE	DESCRIPTION
----	------	-------------

SSG REVISION SCHEDULE

MAIL ROOM - LAM 7ft  
- OPTION 3

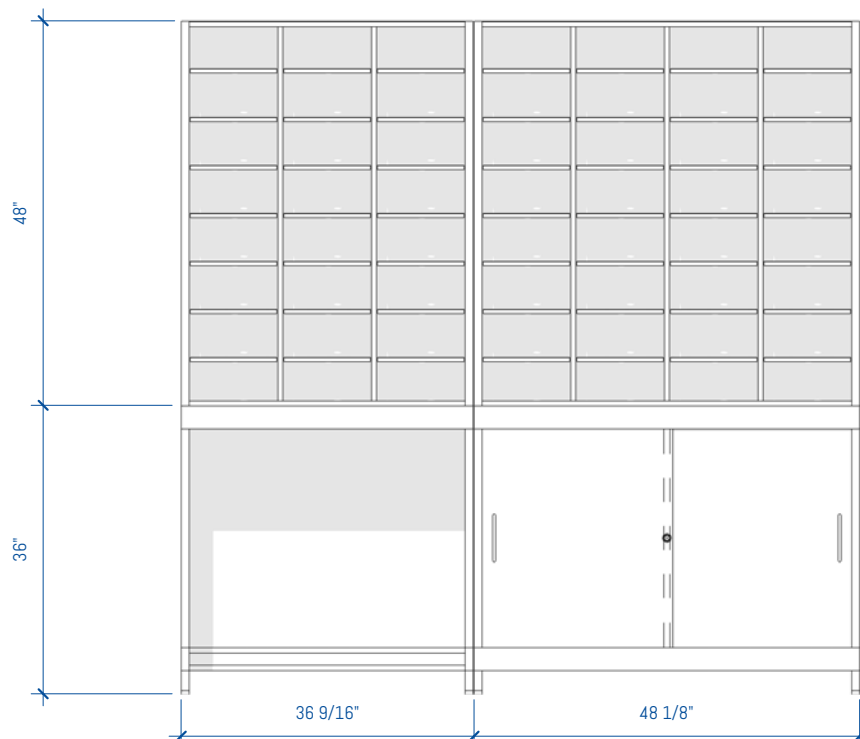
SHEET NUMBER

MR-7 of MR-30

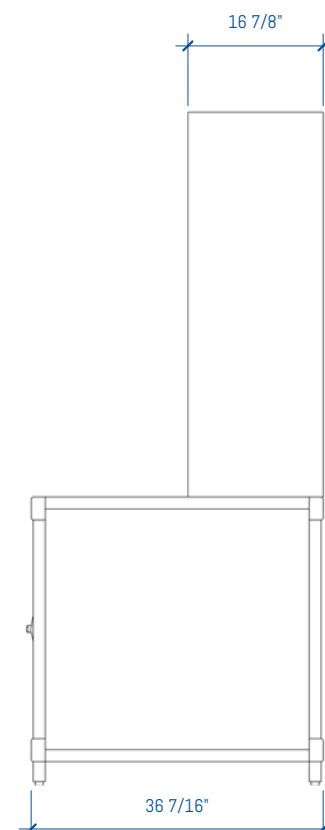


4 MAIL ROOM - LAM 7ft - OPTION 3  
1/2" = 1'-0"

3 MAIL ROOM - LAM 7ft - OPTION 3



2 MAIL ROOM - LAM 7ft - OPTION 3 - Front  
1/2" = 1'-0"



1 MAIL ROOM - LAM 7ft - OPTION 3 - Side  
1/2" = 1'-0"

# GENERAL NOTES

## SUSTAINABILITY

- Particleboard and MDF fabricated from recycled wood waste material
- Cardboard packaging made from recycled materials
- Unusable pallets are recycled
- All aluminum scrap is recycled
- All adhesives used are water-based
- Products meet low VOC standards
- Powder coat paint is used on all metal surfaces
- Greenguard Gold Certified to provide safe, quality, environmentally friendly workspaces.
- FSC and OSHPD certified components are also available

## CONSTRUCTION

- Cabinets are constructed of 3/4" thick industrial grade 40-50lb substrate, double-faced melamine
- All exposed edges are covered with 2mm PVC edge banding
- All panels are connected with hafele mini-fix cam hidden fastener system
- All cabinets are rail mounted for ease of install
- Work surfaces are constructed of 1 1/16" thick high-pressure laminate

## MODULAR CASEWORK ROOM SEGMENTS

Copyright 2017 Southwest Solutions Group. This material is proprietary and confidential and the disclosure, reproduction (by photocopy, film, blueprint or otherwise) or incorporation into any information retrieval system without first receiving written approval from Southwest Solutions Group is expressly prohibited by law.

Approved By

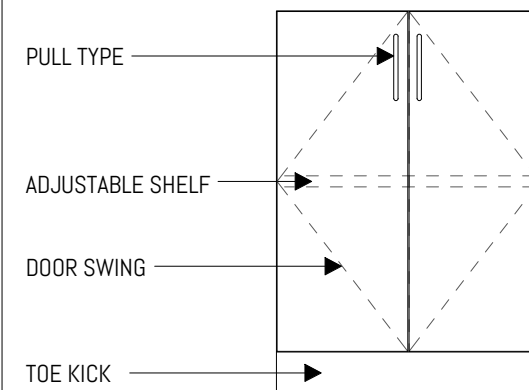
Date

Drawn by DHaynal

Salesperson SSG

Scale 1/2" = 1'-0"

# LEGEND



## FOR MORE INFORMATION

<https://bim.southwestsolutions.com>

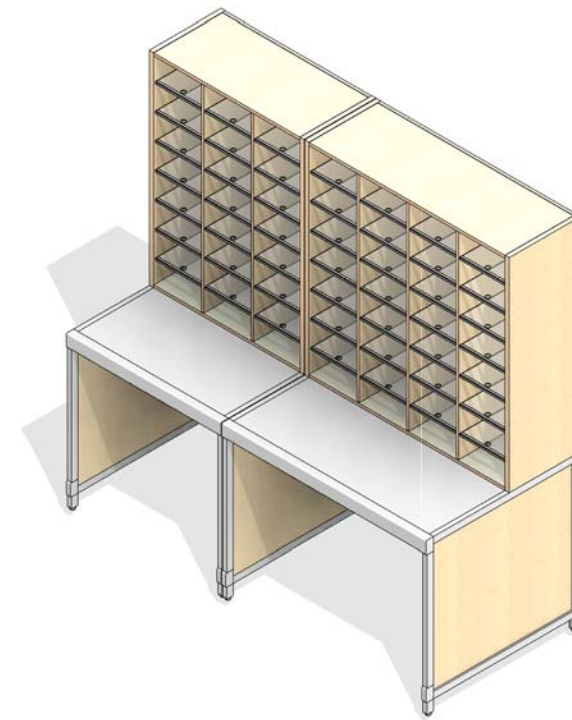
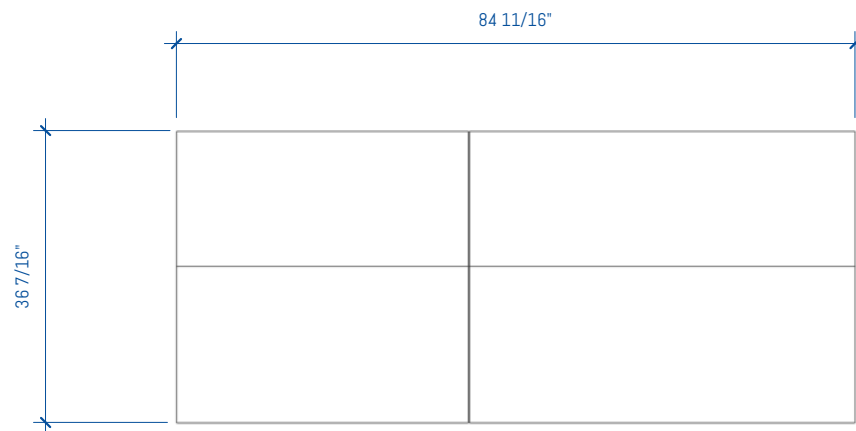
RN	DATE	DESCRIPTION
----	------	-------------

SSG REVISION SCHEDULE

## MAIL ROOM - LAM 7ft - OPTION 4

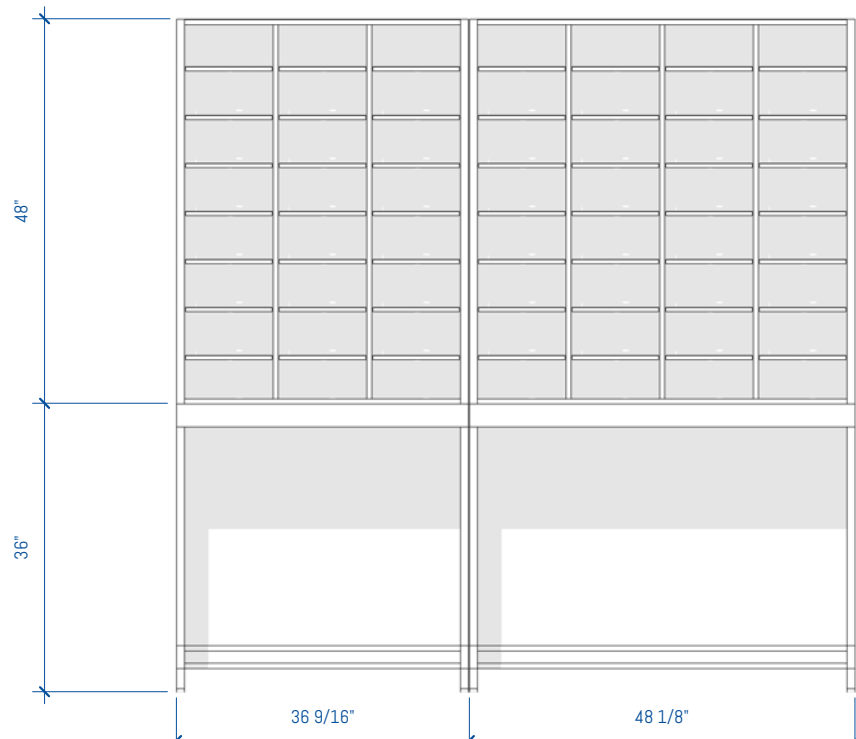
SHEET NUMBER

MR-8 of MR-30

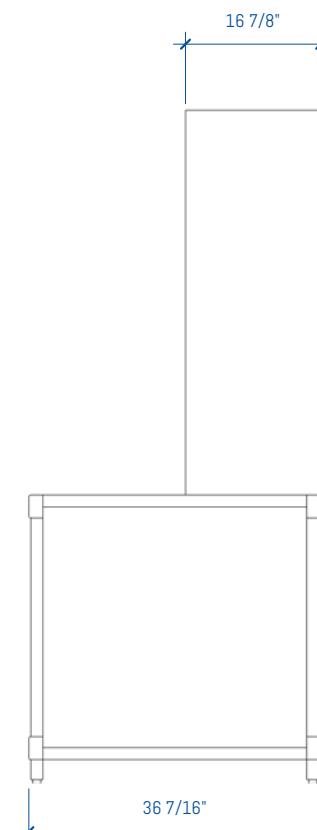


4 MAIL ROOM - LAM 7ft - OPTION 4  
1/2" = 1'-0"

3 MAIL ROOM - LAM 7ft - OPTION 4

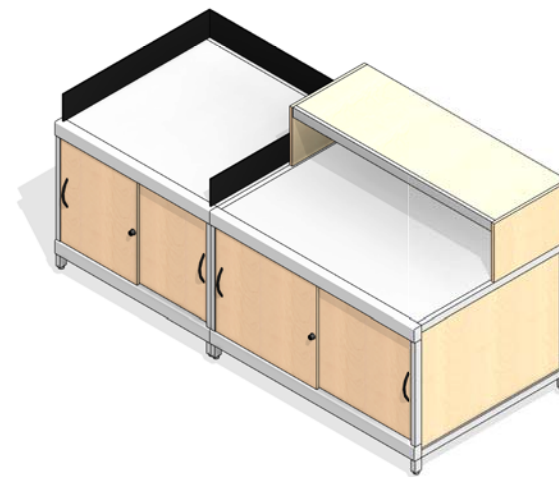
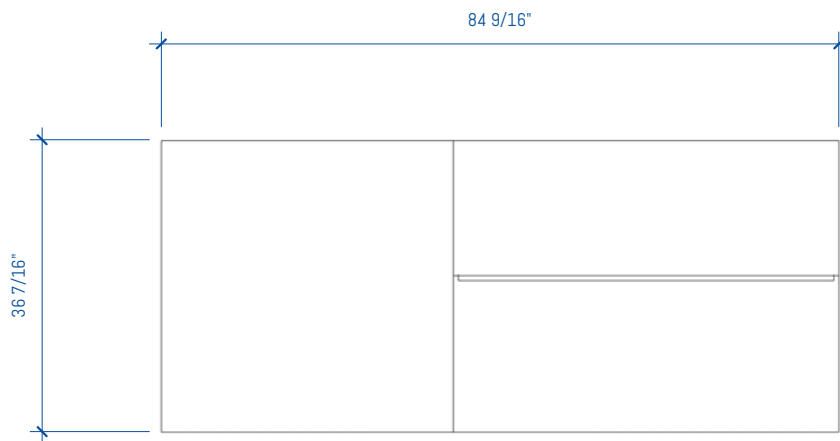


2 MAIL ROOM - LAM 7ft - OPTION 4 - Front  
1/2" = 1'-0"



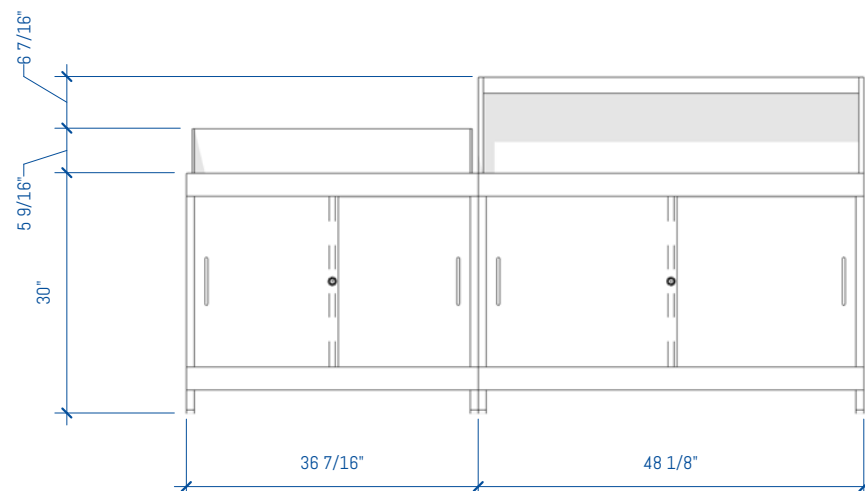
1 MAIL ROOM - LAM 7ft - OPTION 4 - Side  
1/2" = 1'-0"



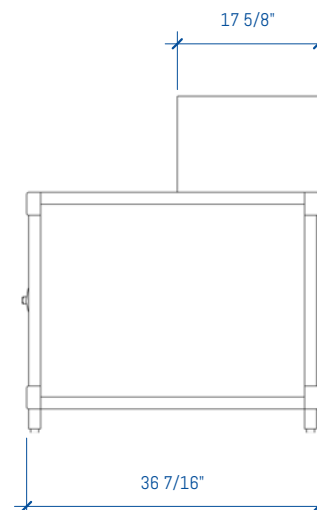


4 MAIL ROOM - LAM 7ft - OPTION 5  
1/2" = 1'-0"

3 MAIL ROOM - LAM 7ft - OPTION 5  
1/2" = 1'-0"



2 MAIL ROOM - LAM 7ft - OPTION 5 - Front  
1/2" = 1'-0"



1 MAIL ROOM - LAM 7ft - OPTION 5 - Side  
1/2" = 1'-0"

# GENERAL NOTES

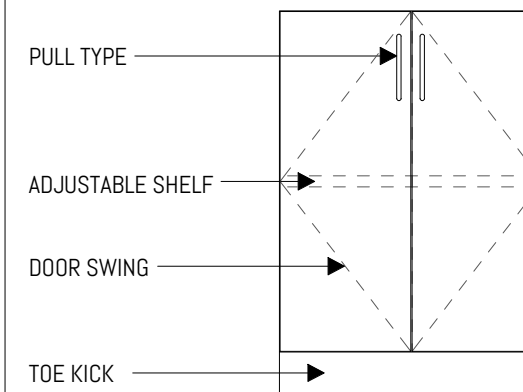
## SUSTAINABILITY

- Particleboard and MDF fabricated from recycled wood waste material
- Cardboard packaging made from recycled materials
- Unusable pallets are recycled
- All aluminum scrap is recycled
- All adhesives used are water-based
- Products meet low VOC standards
- Powder coat paint is used on all metal surfaces
- Greenguard Gold Certified to provide safe, quality, environmentally friendly workspaces.
- FSC and OSHPD certified components are also available

## CONSTRUCTION

- Cabinets are constructed of 3/4" thick industrial grade 40-50lb substrate, double-faced melamine
- All exposed edges are covered with 2mm PVC edge banding
- All panels are connected with hafele mini-fix cam hidden fastener system
- All cabinets are rail mounted for ease of install
- Work surfaces are constructed of 1 1/16" thick high-pressure laminate

# LEGEND



## FOR MORE INFORMATION

<https://bim.southwestsolutions.com>

## MODULAR CASEWORK ROOM SEGMENTS

Copyright 2017 Southwest Solutions Group. This material is proprietary and confidential and the disclosure, reproduction (by photocopy, film, blueprint or otherwise) or incorporation into any information retrieval system without first receiving written approval from Southwest Solutions Group is expressly prohibited by law.

Approved By

Date

Drawn by DHaynal

Salesperson SSG

Scale 1/2" = 1'-0"

RN	DATE	DESCRIPTION
----	------	-------------

SSG REVISION SCHEDULE

MAIL ROOM - LAM 7ft  
- OPTION 5

SHEET NUMBER

MR-9 of MR-30

# GENERAL NOTES

## SUSTAINABILITY

- Particleboard and MDF fabricated from recycled wood waste material
- Cardboard packaging made from recycled materials
- Unusable pallets are recycled
- All aluminum scrap is recycled
- All adhesives used are water-based
- Products meet low VOC standards
- Powder coat paint is used on all metal surfaces
- Greenguard Gold Certified to provide safe, quality, environmentally friendly workspaces.
- FSC and OSHPD certified components are also available

## CONSTRUCTION

- Cabinets are constructed of 3/4" thick industrial grade 40-50lb substrate, double-faced melamine
- All exposed edges are covered with 2mm PVC edge banding
- All panels are connected with hafele mini-fix cam hidden fastener system
- All cabinets are rail mounted for ease of install
- Work surfaces are constructed of 1 1/16" thick high-pressure laminate

## MODULAR CASEWORK ROOM SEGMENTS

Copyright 2017 Southwest Solutions Group. This material is proprietary and confidential and the disclosure, reproduction (by photocopy, film, blueprint or otherwise) or incorporation into any information retrieval system without first receiving written approval from Southwest Solutions Group is expressly prohibited by law.

Approved By

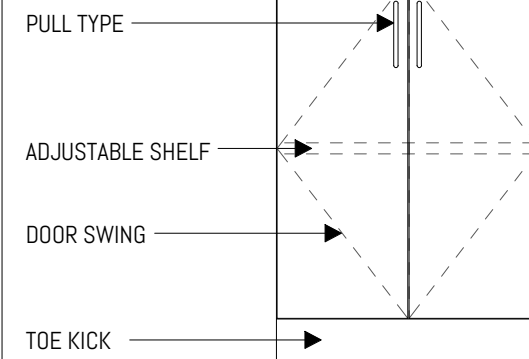
Date

Drawn by **DHaynal**

Salesperson **SSG**

Scale **1/2" = 1'-0"**

# LEGEND



## FOR MORE INFORMATION

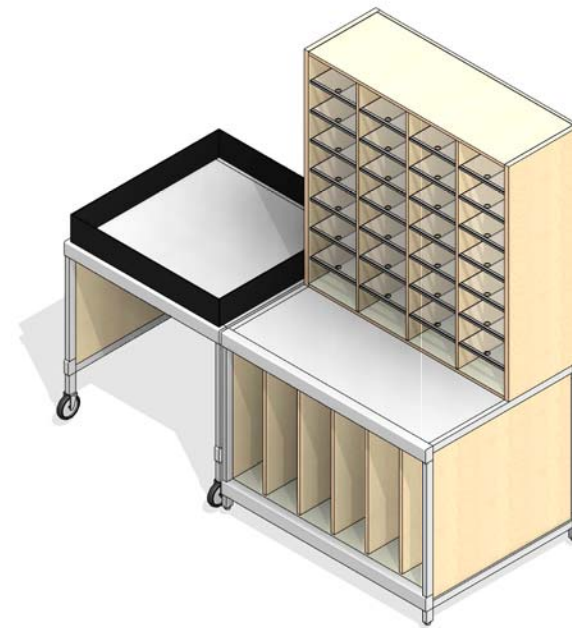
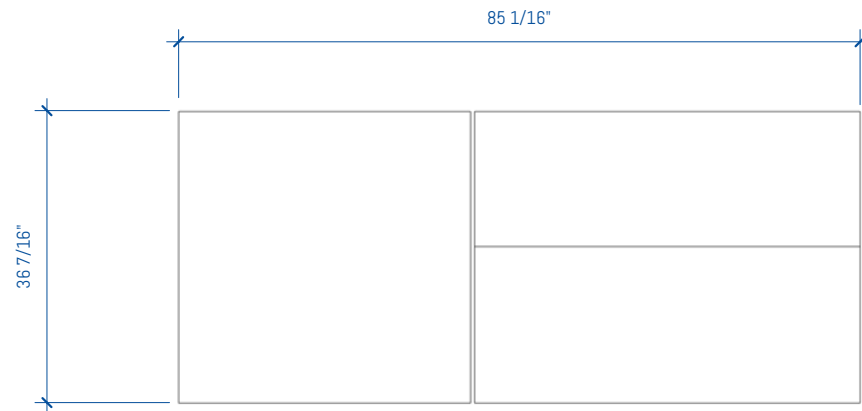
<https://bim.southwestsolutions.com>

RN	DATE	DESCRIPTION
<b>SSG REVISION SCHEDULE</b>		

## MAIL ROOM - LAM 7ft - OPTION 6

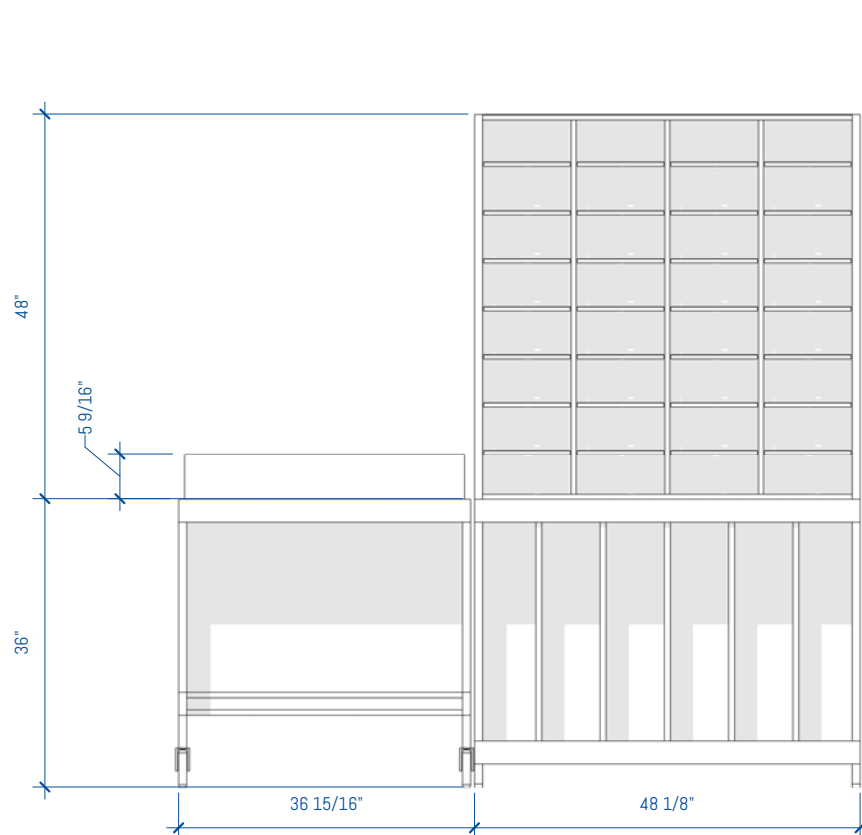
SHEET NUMBER

**MR-10 of MR-30**

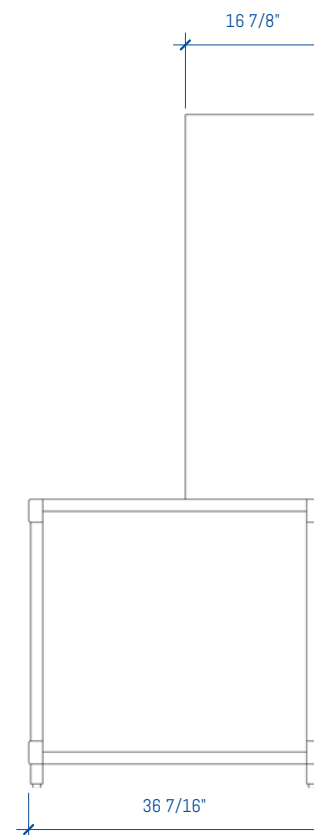


4 MAIL ROOM - LAM 7ft - OPTION 6  
1/2" = 1'-0"

3 MAIL ROOM - LAM 7ft - OPTION 6



2 MAIL ROOM - LAM 7ft - OPTION 6 - Front  
1/2" = 1'-0"



1 MAIL ROOM - LAM 7ft - OPTION 6 - Side  
1/2" = 1'-0"

# GENERAL NOTES

## SUSTAINABILITY

- Particleboard and MDF fabricated from recycled wood waste material
- Cardboard packaging made from recycled materials
- Unusable pallets are recycled
- All aluminum scrap is recycled
- All adhesives used are water-based
- Products meet low VOC standards
- Powder coat paint is used on all metal surfaces
- Greenguard Gold Certified to provide safe, quality, environmentally friendly workspaces.
- FSC and OSHPD certified components are also available

## CONSTRUCTION

- Cabinets are constructed of 3/4" thick industrial grade 40-50lb substrate, double-faced melamine
- All exposed edges are covered with 2mm PVC edge banding
- All panels are connected with hafele mini-fix cam hidden fastener system
- All cabinets are rail mounted for ease of install
- Work surfaces are constructed of 1 1/16" thick high-pressure laminate

## MODULAR CASEWORK ROOM SEGMENTS

Copyright 2017 Southwest Solutions Group. This material is proprietary and confidential and the disclosure, reproduction (by photocopy, film, blueprint or otherwise) or incorporation into any information retrieval system without first receiving written approval from Southwest Solutions Group is expressly prohibited by law.

Approved By

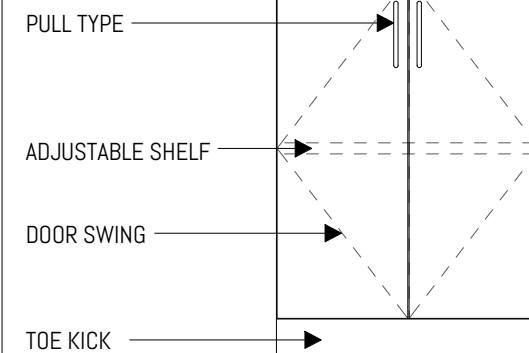
Date

Drawn by DHaynal

Salesperson SSG

Scale 1/2" = 1'-0"

# LEGEND



## FOR MORE INFORMATION

<https://bim.southwestsolutions.com>

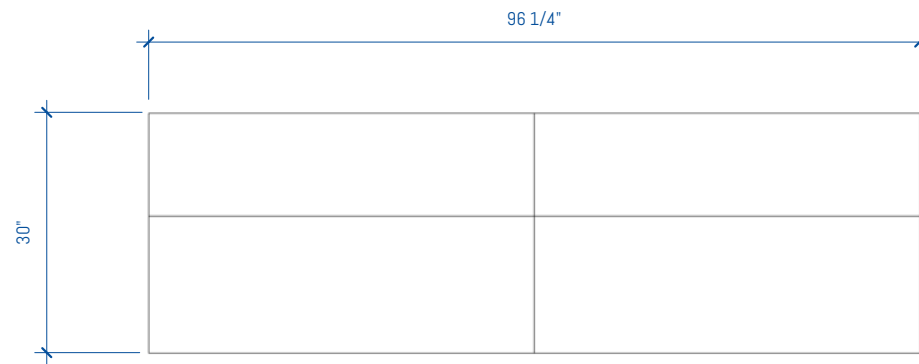
RN	DATE	DESCRIPTION
----	------	-------------

SSG REVISION SCHEDULE

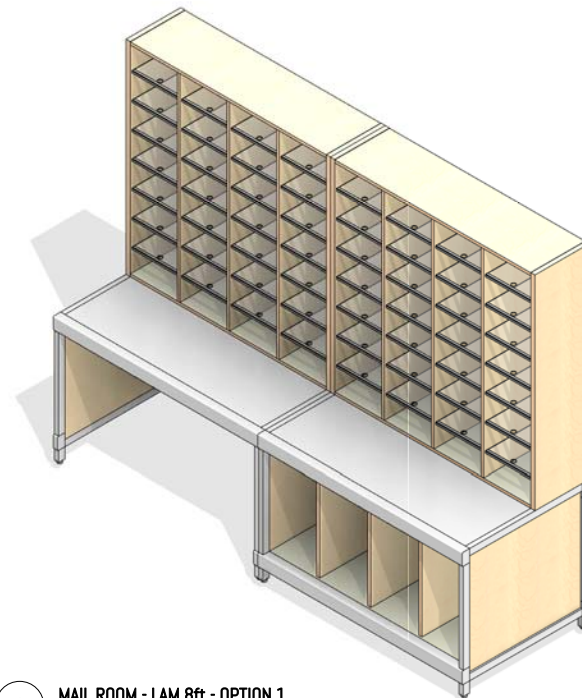
## MAIL ROOM - LAM 8ft - OPTION 1

SHEET NUMBER

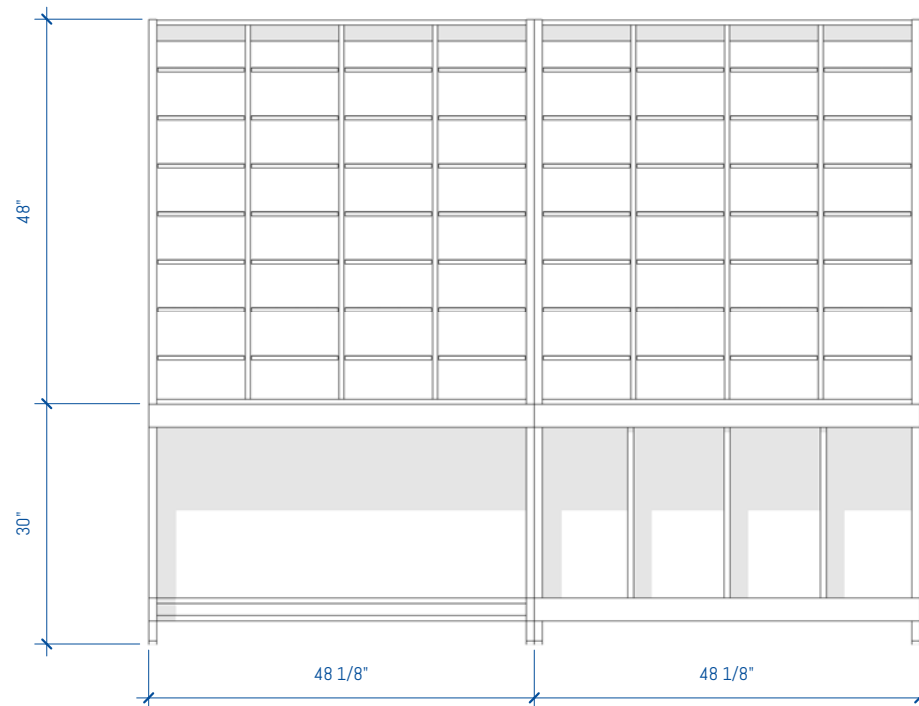
MR-11 of MR-30



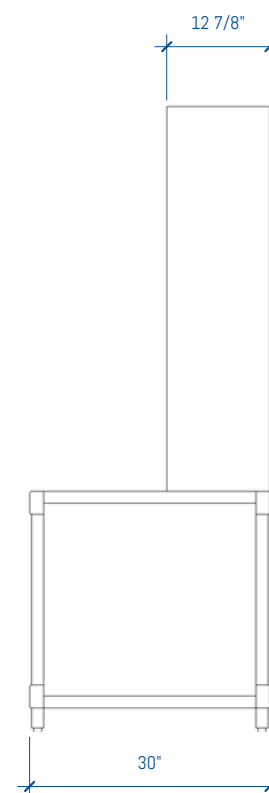
4 MAIL ROOM - LAM 8ft - OPTION 1  
1/2" = 1'-0"



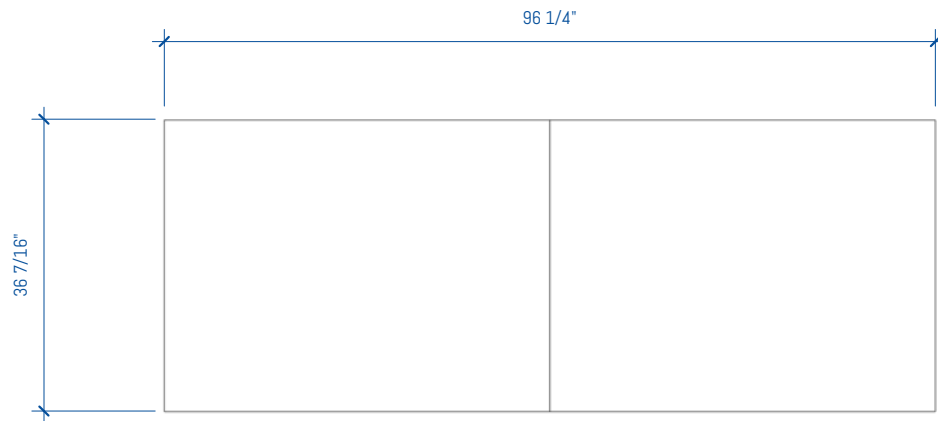
3 MAIL ROOM - LAM 8ft - OPTION 1



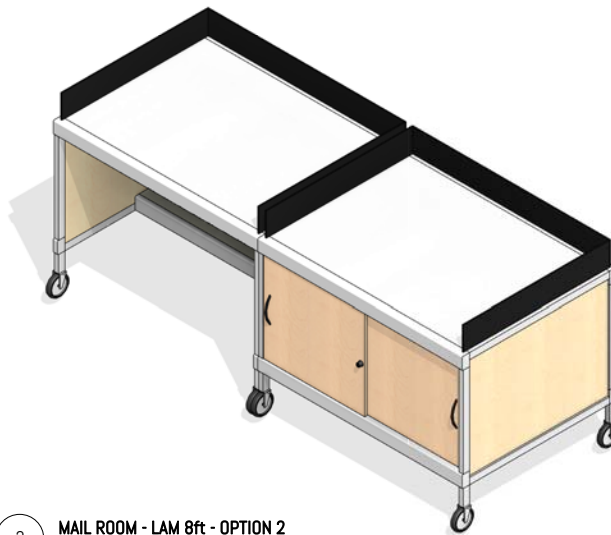
2 MAIL ROOM - LAM 8ft - OPTION 1 - Front  
1/2" = 1'-0"



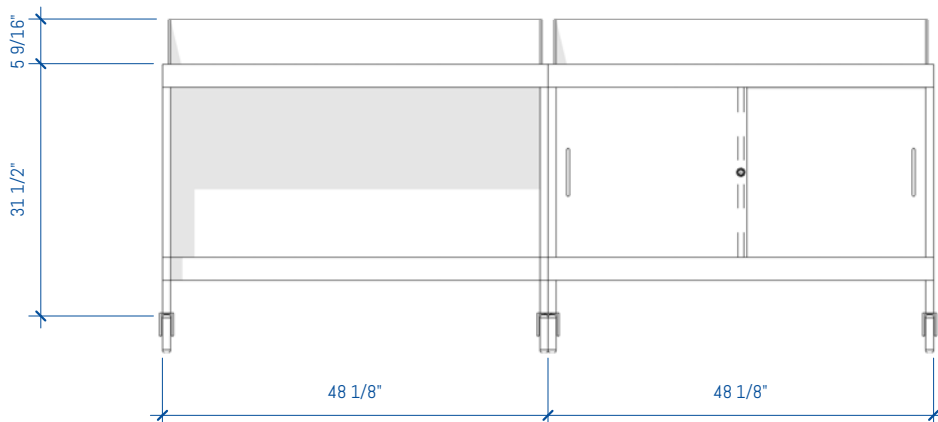
1 MAIL ROOM - LAM 8ft - OPTION 1 - Side  
1/2" = 1'-0"



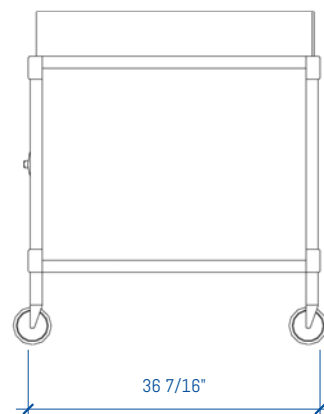
4 MAIL ROOM - LAM 8ft - OPTION 2  
1/2" = 1'-0"



3 MAIL ROOM - LAM 8ft - OPTION 2



2 MAIL ROOM - LAM 8ft - OPTION 2 - Front  
1/2" = 1'-0"



1 MAIL ROOM - LAM 8ft - OPTION 2 - Side  
1/2" = 1'-0"

# GENERAL NOTES

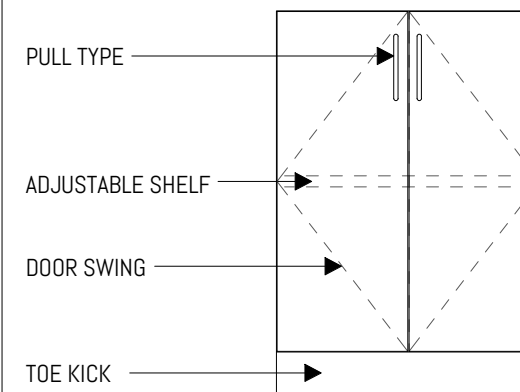
## SUSTAINABILITY

- Particleboard and MDF fabricated from recycled wood waste material
- Cardboard packaging made from recycled materials
- Unusable pallets are recycled
- All aluminum scrap is recycled
- All adhesives used are water-based
- Products meet low VOC standards
- Powder coat paint is used on all metal surfaces
- Greenguard Gold Certified to provide safe, quality, environmentally friendly workspaces.
- FSC and OSHPD certified components are also available

## CONSTRUCTION

- Cabinets are constructed of 3/4" thick industrial grade 40-50lb substrate, double-faced melamine
- All exposed edges are covered with 2mm PVC edge banding
- All panels are connected with hafele mini-fix cam hidden fastener system
- All cabinets are rail mounted for ease of install
- Work surfaces are constructed of 1 1/16" thick high-pressure laminate

# LEGEND



## FOR MORE INFORMATION

<https://bim.southwestsolutions.com>

## MODULAR CASEWORK ROOM SEGMENTS

Copyright 2017 Southwest Solutions Group. This material is proprietary and confidential and the disclosure, reproduction (by photocopy, film, blueprint or otherwise) or incorporation into any information retrieval system without first receiving written approval from Southwest Solutions Group is expressly prohibited by law.

Approved By

Date

Drawn by DHaynal

Salesperson SSG

Scale 1/2" = 1'-0"

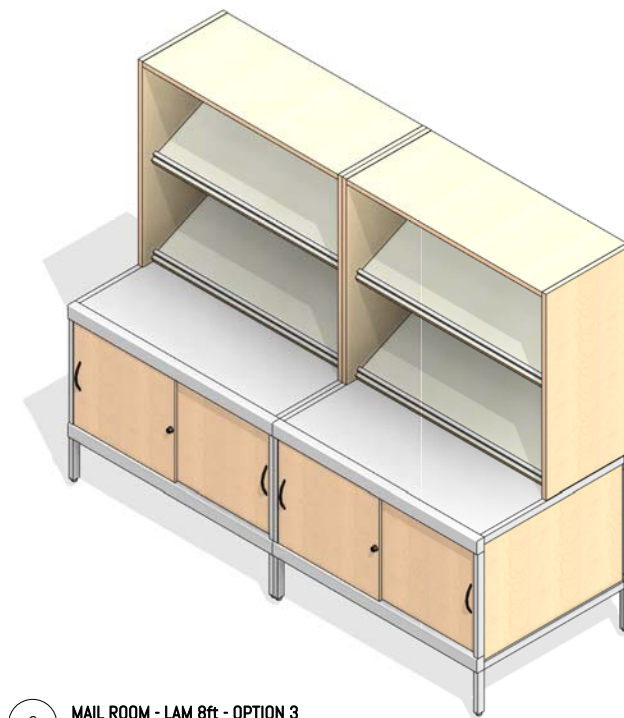
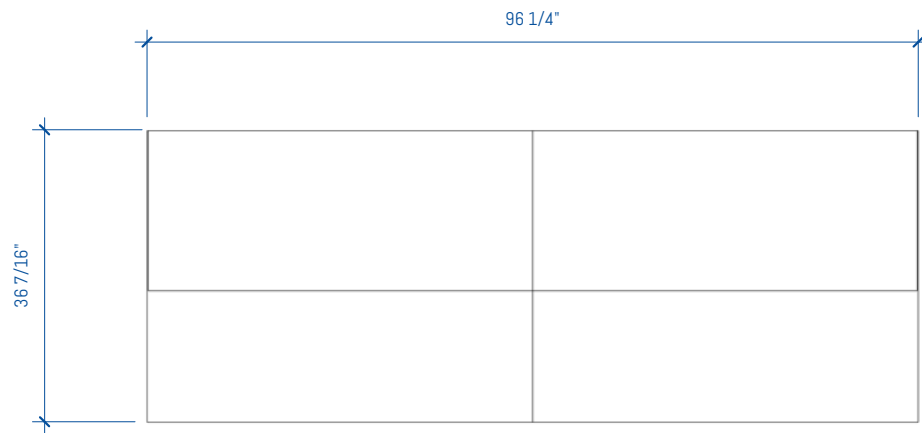
RN	DATE	DESCRIPTION
----	------	-------------

SSG REVISION SCHEDULE

MAIL ROOM - LAM 8ft  
- OPTION 2

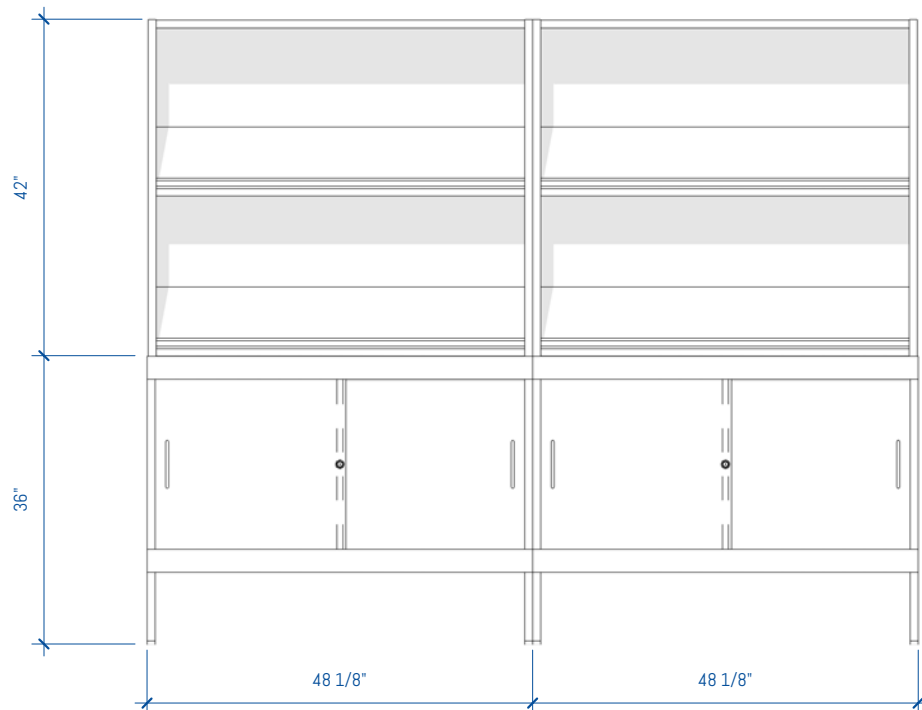
SHEET NUMBER

MR-12 of MR-30

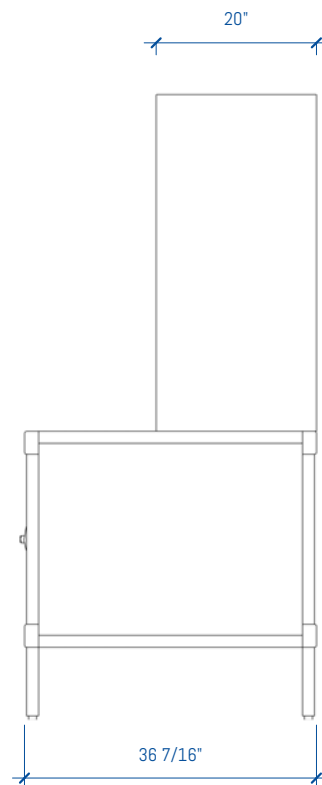


4 MAIL ROOM - LAM 8ft - OPTION 3  
1/2" = 1'-0"

3 MAIL ROOM - LAM 8ft - OPTION 3  
1/2" = 1'-0"



2 MAIL ROOM - LAM 8ft - OPTION 3 - Front  
1/2" = 1'-0"



1 MAIL ROOM - LAM 8ft - OPTION 3 - Side  
1/2" = 1'-0"

# GENERAL NOTES

## SUSTAINABILITY

- Particleboard and MDF fabricated from recycled wood waste material
- Cardboard packaging made from recycled materials
- Unusable pallets are recycled
- All aluminum scrap is recycled
- All adhesives used are water-based
- Products meet low VOC standards
- Powder coat paint is used on all metal surfaces
- Greenguard Gold Certified to provide safe, quality, environmentally friendly workspaces.
- FSC and OSHPD certified components are also available

## CONSTRUCTION

- Cabinets are constructed of 3/4" thick industrial grade 40-50lb substrate, double-faced melamine
- All exposed edges are covered with 2mm PVC edge banding
- All panels are connected with hafele mini-fix cam hidden fastener system
- All cabinets are rail mounted for ease of install
- Work surfaces are constructed of 1 1/16" thick high-pressure laminate

## MODULAR CASEWORK ROOM SEGMENTS

Copyright 2017 Southwest Solutions Group. This material is proprietary and confidential and the disclosure, reproduction (by photocopy, film, blueprint or otherwise) or incorporation into any information retrieval system without first receiving written approval from Southwest Solutions Group is expressly prohibited by law.

Approved By

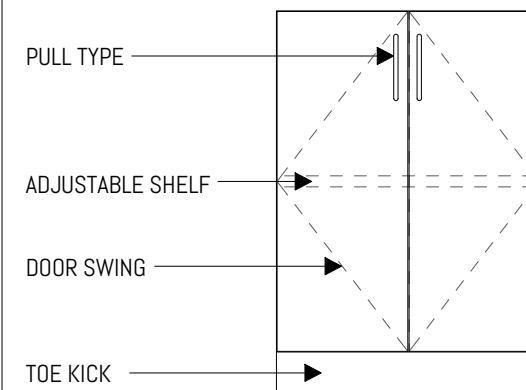
Date

Drawn by DHaynal

Salesperson SSG

Scale 1/2" = 1'-0"

# LEGEND



RN	DATE	DESCRIPTION
<b>SSG REVISION SCHEDULE</b>		

## MAIL ROOM - LAM 8ft - OPTION 3

SHEET NUMBER

MR-13 of MR-30

## FOR MORE INFORMATION

<https://bim.southwestsolutions.com>



# GENERAL NOTES

## SUSTAINABILITY

- Particleboard and MDF fabricated from recycled wood waste material
- Cardboard packaging made from recycled materials
- Unusable pallets are recycled
- All aluminum scrap is recycled
- All adhesives used are water-based
- Products meet low VOC standards
- Powder coat paint is used on all metal surfaces
- Greenguard Gold Certified to provide safe, quality, environmentally friendly workspaces.
- FSC and OSHPD certified components are also available

## CONSTRUCTION

- Cabinets are constructed of 3/4" thick industrial grade 40-50lb substrate, double-faced melamine
- All exposed edges are covered with 2mm PVC edge banding
- All panels are connected with hafele mini-fix cam hidden fastener system
- All cabinets are rail mounted for ease of install
- Work surfaces are constructed of 1 1/16" thick high-pressure laminate

## MODULAR CASEWORK ROOM SEGMENTS

Copyright 2017 Southwest Solutions Group. This material is proprietary and confidential and the disclosure, reproduction (by photocopy, film, blueprint or otherwise) or incorporation into any information retrieval system without first receiving written approval from Southwest Solutions Group is expressly prohibited by law.

Approved By

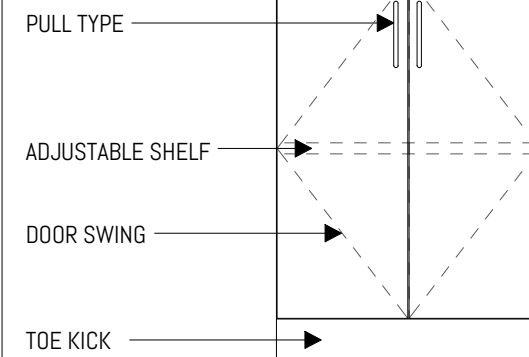
Date

Drawn by DHaynal

Salesperson SSG

Scale 1/2" = 1'-0"

# LEGEND



RN	DATE	DESCRIPTION
----	------	-------------

SSG REVISION SCHEDULE

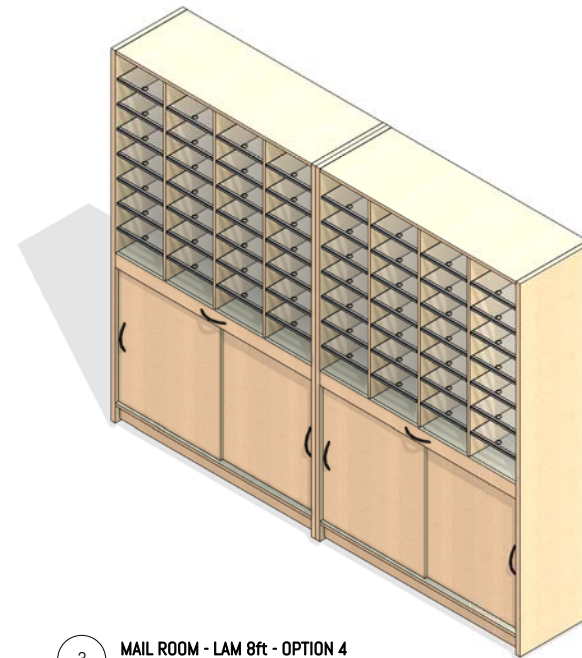
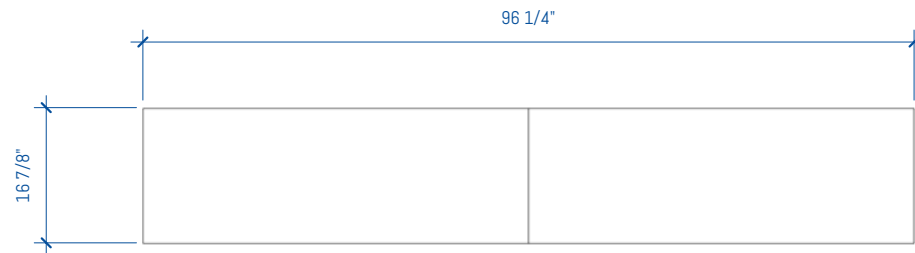
MAIL ROOM - LAM 8ft  
- OPTION 4

SHEET NUMBER

MR-14 of MR-30

## FOR MORE INFORMATION

<https://bim.southwestsolutions.com>

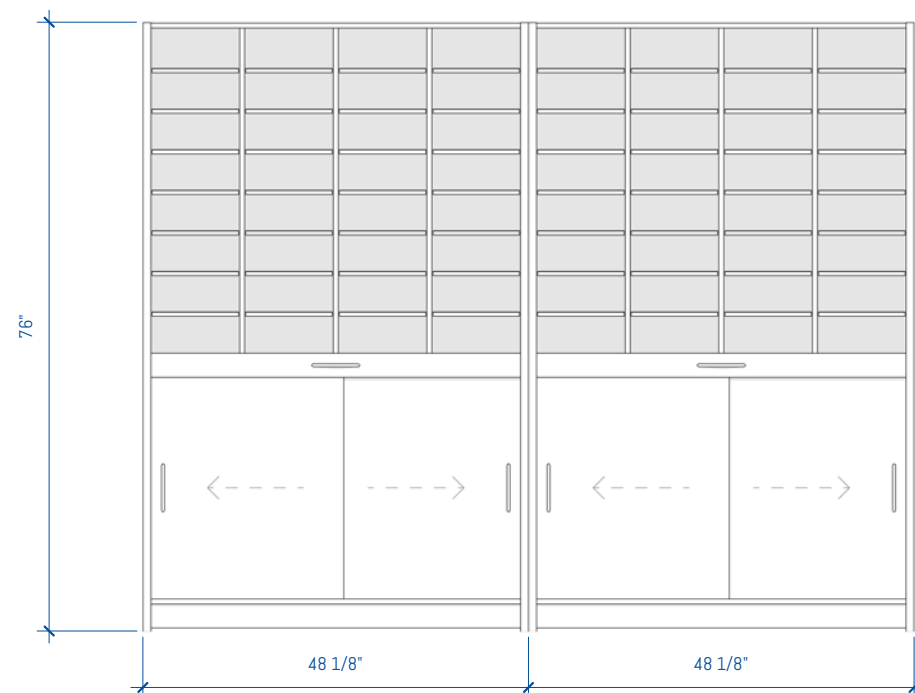


3 MAIL ROOM - LAM 8ft - OPTION 4

1/2" = 1'-0"

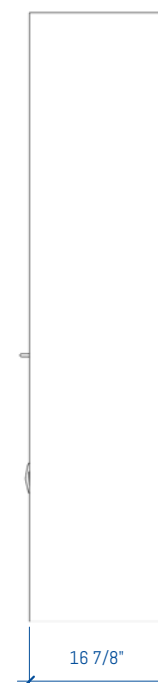
4 MAIL ROOM - LAM 8ft - OPTION 4

1/2" = 1'-0"



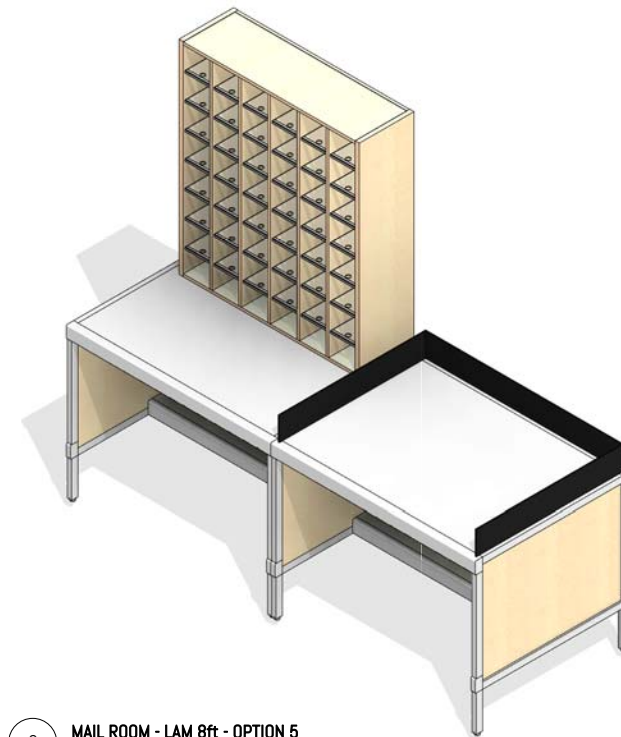
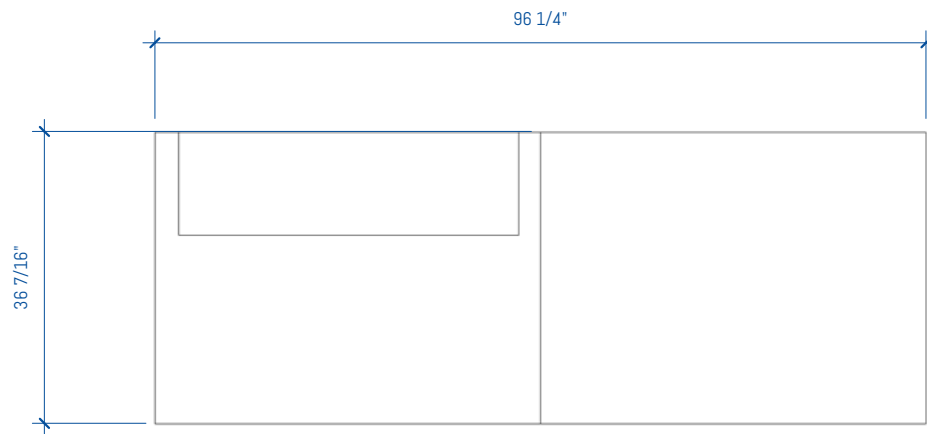
2 MAIL ROOM - LAM 8ft - OPTION 4 - Front

1/2" = 1'-0"



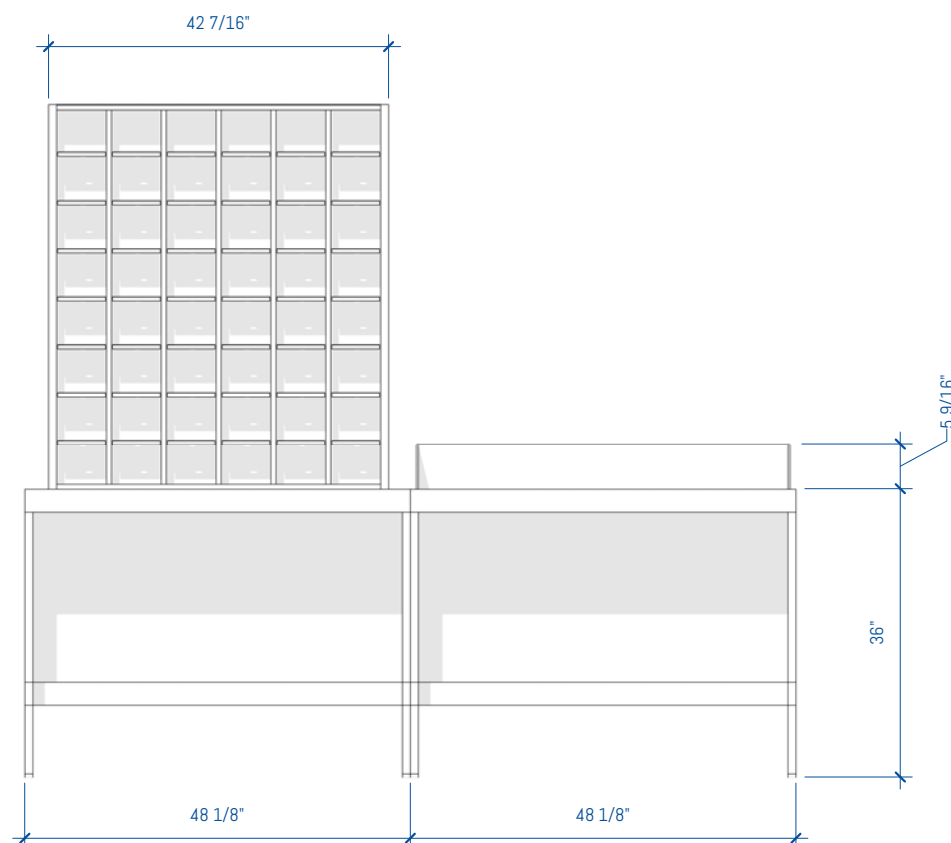
1 MAIL ROOM - LAM 8ft - OPTION 4 - Side

1/2" = 1'-0"

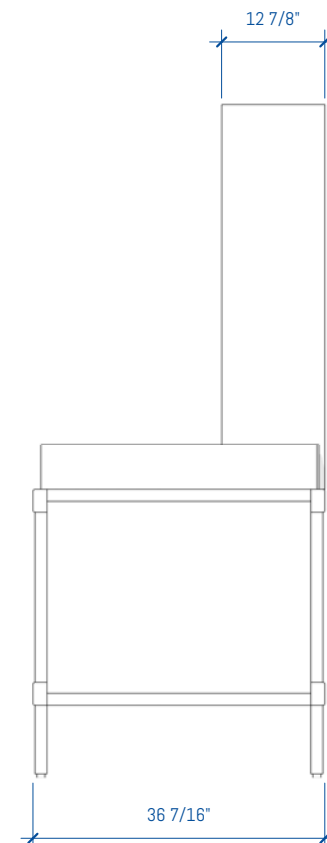


4 MAIL ROOM - LAM 8ft - OPTION 5  
1/2" = 1'-0"

3 MAIL ROOM - LAM 8ft - OPTION 5  
1/2" = 1'-0"



2 MAIL ROOM - LAM 8ft - OPTION 5 - Front  
1/2" = 1'-0"



1 MAIL ROOM - LAM 8ft - OPTION 5 - Side  
1/2" = 1'-0"

# GENERAL NOTES

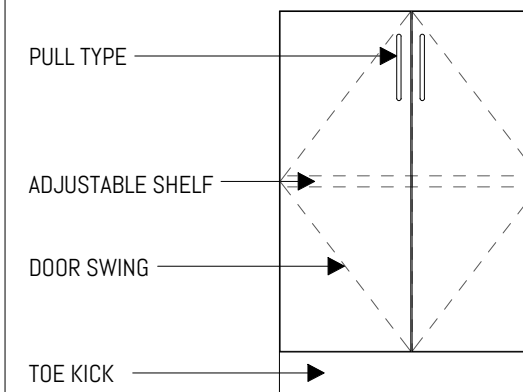
## SUSTAINABILITY

- Particleboard and MDF fabricated from recycled wood waste material
- Cardboard packaging made from recycled materials
- Unusable pallets are recycled
- All aluminum scrap is recycled
- All adhesives used are water-based
- Products meet low VOC standards
- Powder coat paint is used on all metal surfaces
- Greenguard Gold Certified to provide safe, quality, environmentally friendly workspaces.
- FSC and OSHPD certified components are also available

## CONSTRUCTION

- Cabinets are constructed of 3/4" thick industrial grade 40-50lb substrate, double-faced melamine
- All exposed edges are covered with 2mm PVC edge banding
- All panels are connected with hafele mini-fix cam hidden fastener system
- All cabinets are rail mounted for ease of install
- Work surfaces are constructed of 1 1/16" thick high-pressure laminate

# LEGEND



## FOR MORE INFORMATION

<https://bim.southwestsolutions.com>

## MODULAR CASEWORK ROOM SEGMENTS

Copyright 2017 Southwest Solutions Group. This material is proprietary and confidential and the disclosure, reproduction (by photocopy, film, blueprint or otherwise) or incorporation into any information retrieval system without first receiving written approval from Southwest Solutions Group is expressly prohibited by law.

Approved By

Date

Drawn by DHaynal

Salesperson SSG

Scale 1/2" = 1'-0"

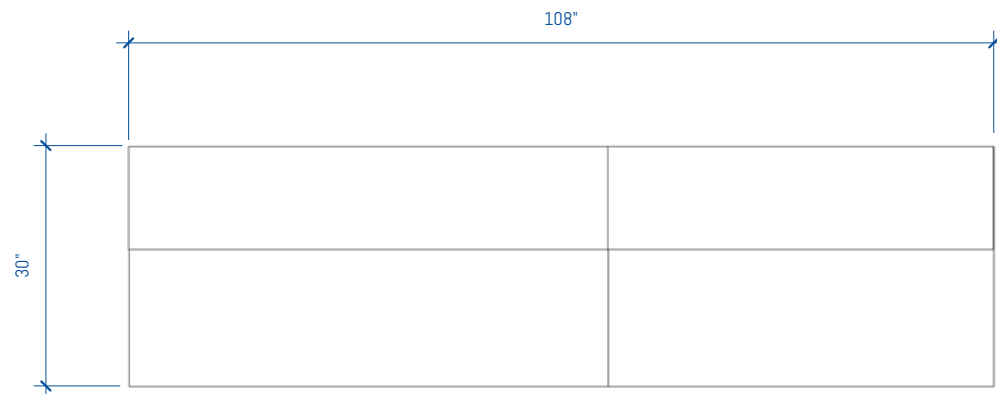
RN	DATE	DESCRIPTION
----	------	-------------

SSG REVISION SCHEDULE

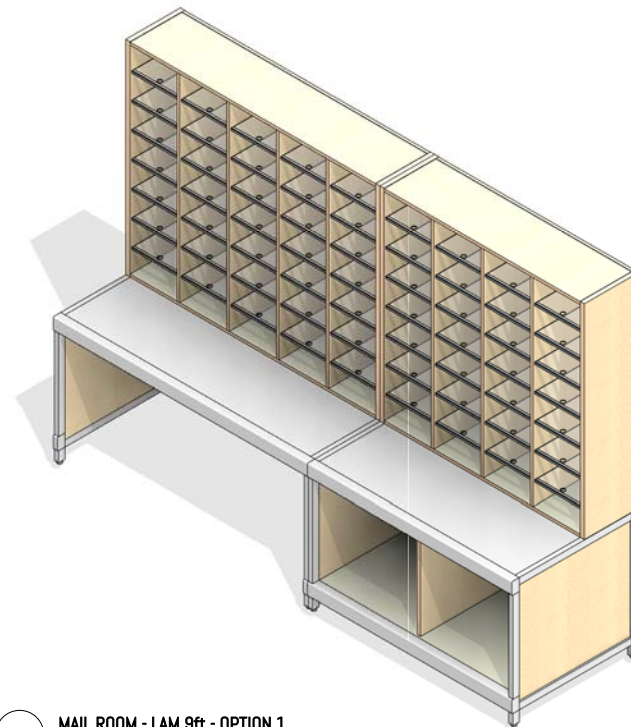
MAIL ROOM - LAM 8ft  
- OPTION 5

SHEET NUMBER

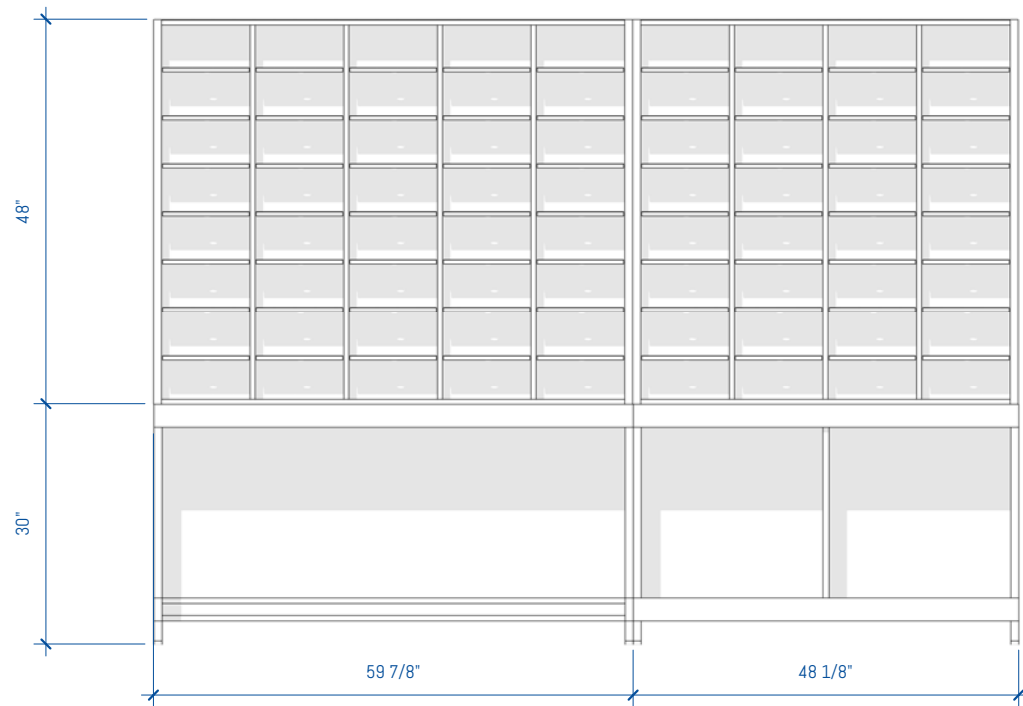
MR-15 of MR-30



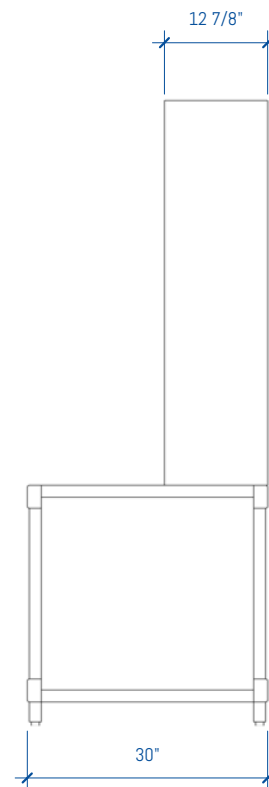
4 MAIL ROOM - LAM 9ft - OPTION 1  
1/2" = 1'-0"



3 MAIL ROOM - LAM 9ft - OPTION 1



2 MAIL ROOM - LAM 9ft - OPTION 1 - Front  
1/2" = 1'-0"



1 MAIL ROOM - LAM 9ft - OPTION 1 - Side  
1/2" = 1'-0"

# GENERAL NOTES

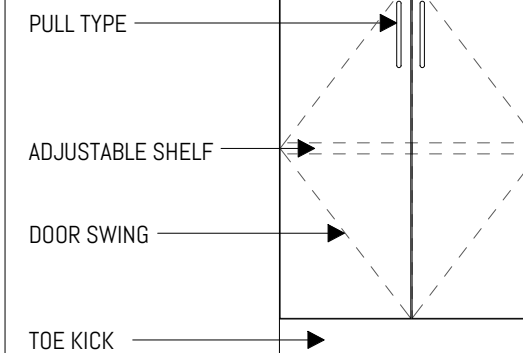
## SUSTAINABILITY

- Particleboard and MDF fabricated from recycled wood waste material
- Cardboard packaging made from recycled materials
- Unusable pallets are recycled
- All aluminum scrap is recycled
- All adhesives used are water-based
- Products meet low VOC standards
- Powder coat paint is used on all metal surfaces
- Greenguard Gold Certified to provide safe, quality, environmentally friendly workspaces.
- FSC and OSHPD certified components are also available

## CONSTRUCTION

- Cabinets are constructed of 3/4" thick industrial grade 40-50lb substrate, double-faced melamine
- All exposed edges are covered with 2mm PVC edge banding
- All panels are connected with hafele mini-fix cam hidden fastener system
- All cabinets are rail mounted for ease of install
- Work surfaces are constructed of 1 1/16" thick high-pressure laminate

# LEGEND



## FOR MORE INFORMATION

<https://bim.southwestsolutions.com>

## MODULAR CASEWORK ROOM SEGMENTS

Copyright 2017 Southwest Solutions Group. This material is proprietary and confidential and the disclosure, reproduction (by photocopy, film, blueprint or otherwise) or incorporation into any information retrieval system without first receiving written approval from Southwest Solutions Group is expressly prohibited by law.

Approved By

Date

Drawn by DHaynal

Salesperson SSG

Scale 1/2" = 1'-0"

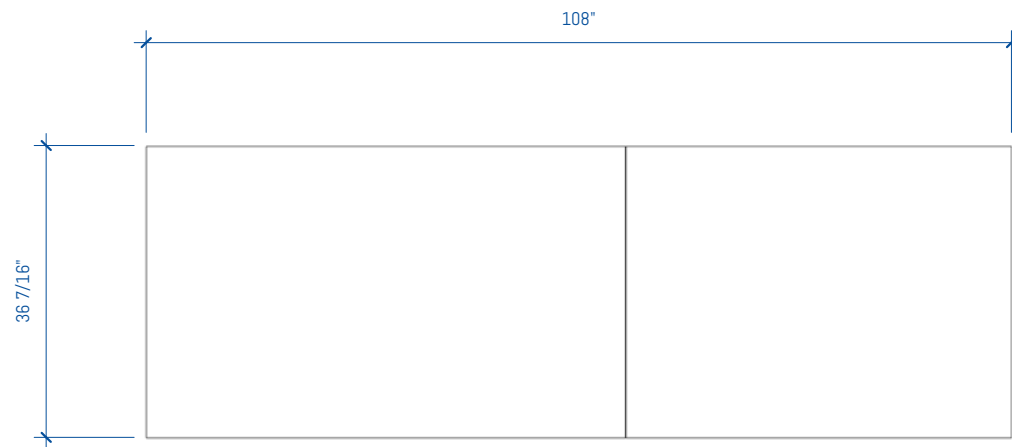
RN	DATE	DESCRIPTION
----	------	-------------

### SSG REVISION SCHEDULE

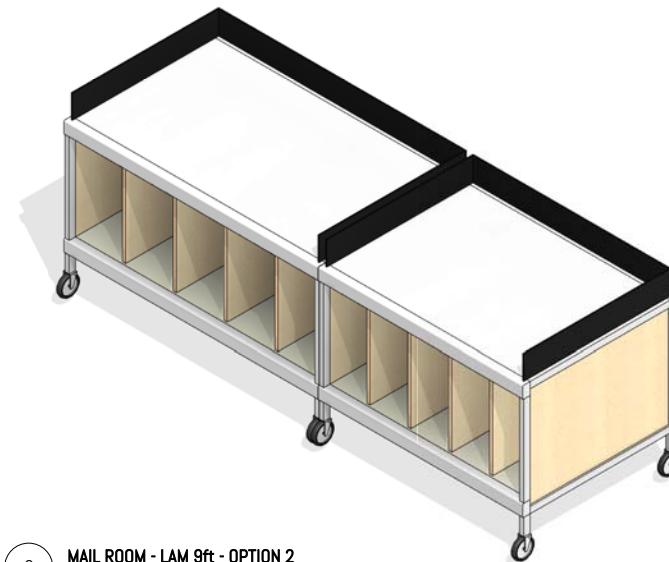
MAIL ROOM - LAM 9ft  
- OPTION 1

SHEET NUMBER

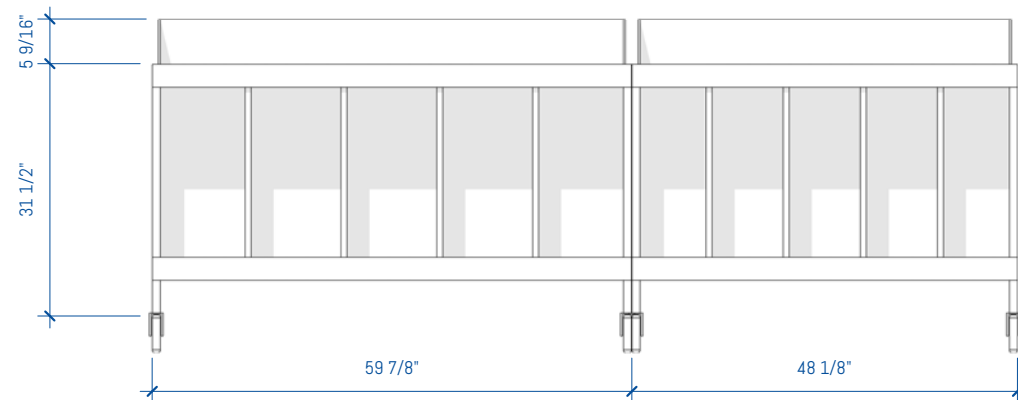
MR-17 of MR-30



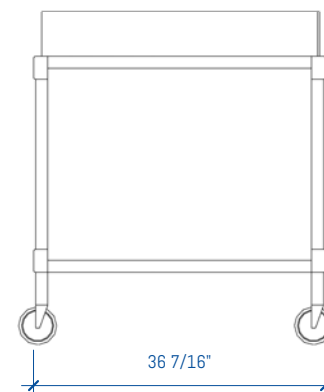
4 MAIL ROOM - LAM 9ft - OPTION 2  
1/2" = 1'-0"



3 MAIL ROOM - LAM 9ft - OPTION 2  
1/2" = 1'-0"



2 MAIL ROOM - LAM 9ft - OPTION 2 - Front  
1/2" = 1'-0"



1 MAIL ROOM - LAM 9ft - OPTION 2 - Side  
1/2" = 1'-0"

# GENERAL NOTES

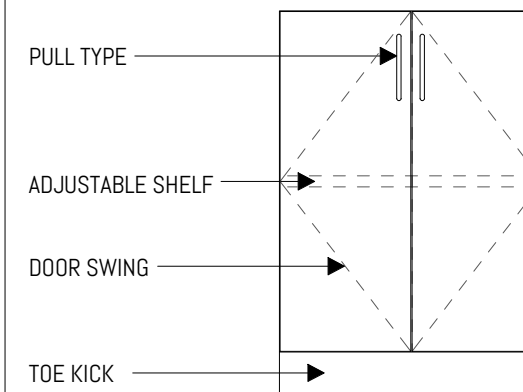
## SUSTAINABILITY

- Particleboard and MDF fabricated from recycled wood waste material
- Cardboard packaging made from recycled materials
- Unusable pallets are recycled
- All aluminum scrap is recycled
- All adhesives used are water-based
- Products meet low VOC standards
- Powder coat paint is used on all metal surfaces
- Greenguard Gold Certified to provide safe, quality, environmentally friendly workspaces.
- FSC and OSHPD certified components are also available

## CONSTRUCTION

- Cabinets are constructed of 3/4" thick industrial grade 40-50lb substrate, double-faced melamine
- All exposed edges are covered with 2mm PVC edge banding
- All panels are connected with hafele mini-fix cam hidden fastener system
- All cabinets are rail mounted for ease of install
- Work surfaces are constructed of 1 1/16" thick high-pressure laminate

# LEGEND



## FOR MORE INFORMATION

<https://bim.southwestsolutions.com>

## MODULAR CASEWORK ROOM SEGMENTS

Copyright 2017 Southwest Solutions Group. This material is proprietary and confidential and the disclosure, reproduction (by photocopy, film, blueprint or otherwise) or incorporation into any information retrieval system without first receiving written approval from Southwest Solutions Group is expressly prohibited by law.

Approved By

Date

Drawn by DHaynal

Salesperson SSG

Scale 1/2" = 1'-0"

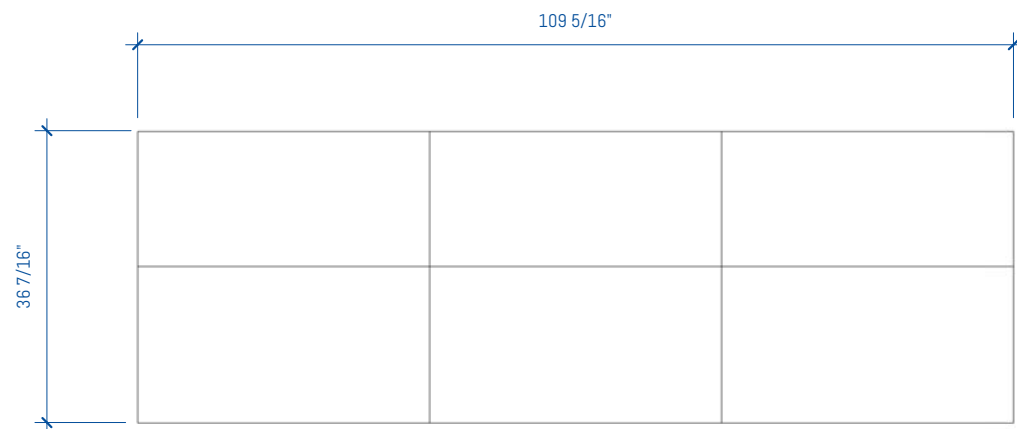
RN	DATE	DESCRIPTION
----	------	-------------

### SSG REVISION SCHEDULE

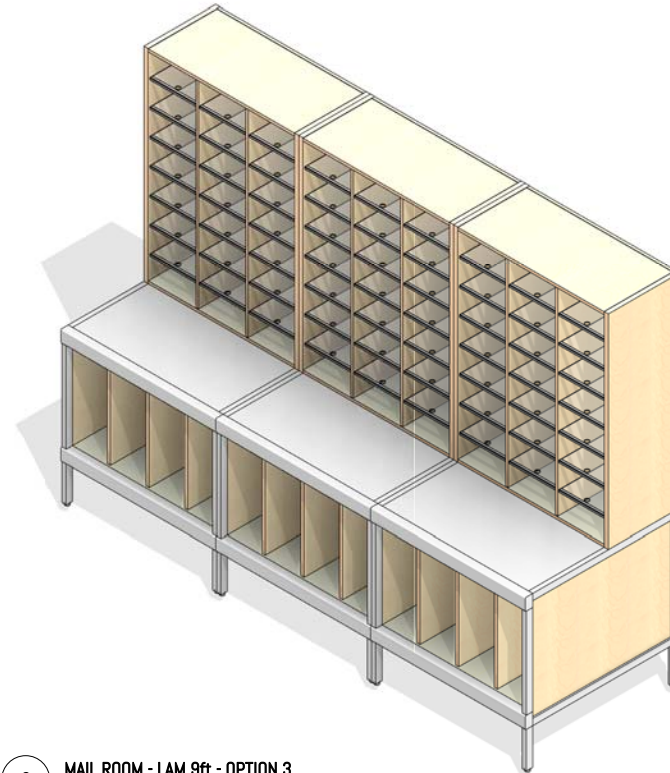
## MAIL ROOM - LAM 9ft - OPTION 2

SHEET NUMBER

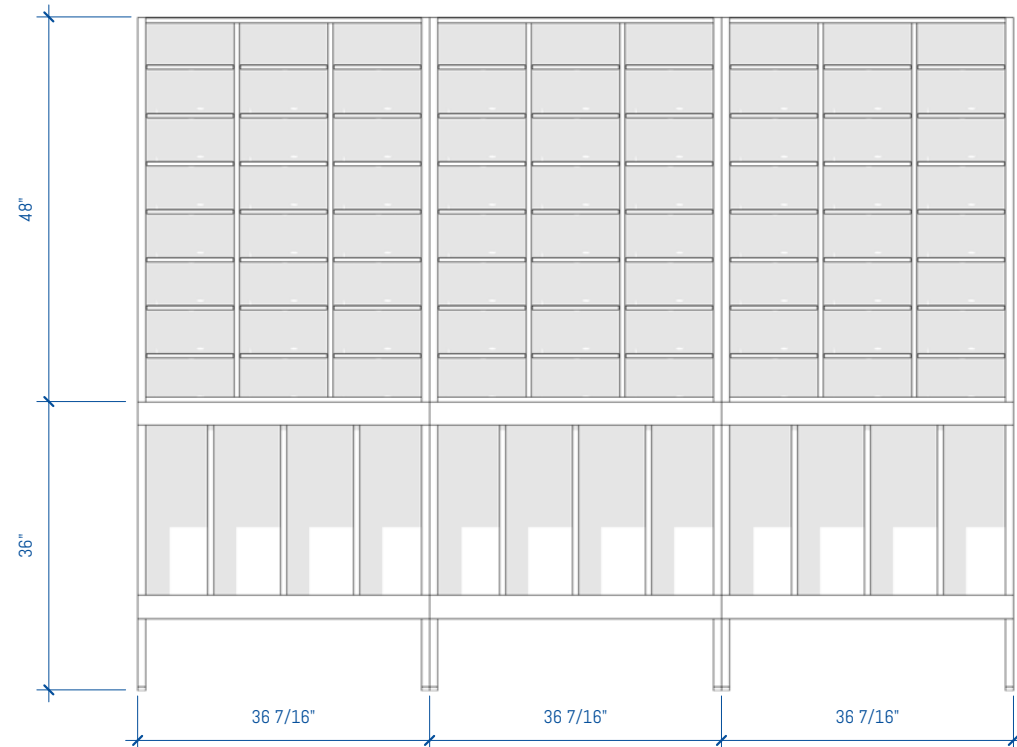
MR-18 of MR-30



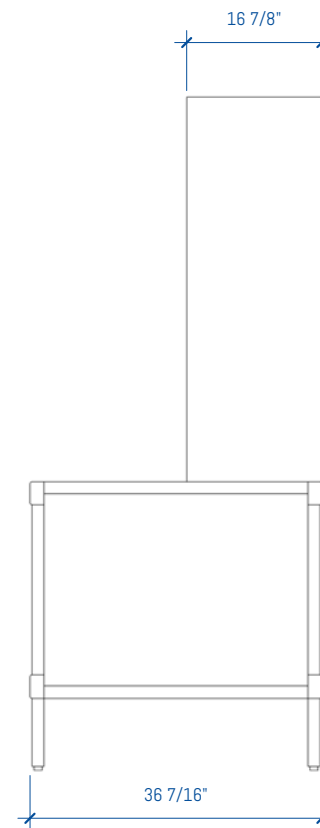
4 MAIL ROOM - LAM 9ft - OPTION 3  
1/2" = 1'-0"



3 MAIL ROOM - LAM 9ft - OPTION 3



2 MAIL ROOM - LAM 9ft - OPTION 3 - Front  
1/2" = 1'-0"



1 MAIL ROOM - LAM 9ft - OPTION 3 - Side  
1/2" = 1'-0"

# GENERAL NOTES

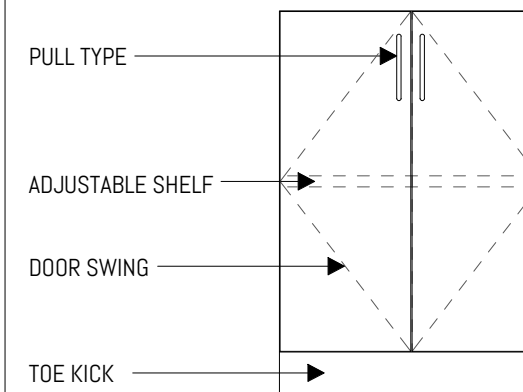
## SUSTAINABILITY

- Particleboard and MDF fabricated from recycled wood waste material
- Cardboard packaging made from recycled materials
- Unusable pallets are recycled
- All aluminum scrap is recycled
- All adhesives used are water-based
- Products meet low VOC standards
- Powder coat paint is used on all metal surfaces
- Greenguard Gold Certified to provide safe, quality, environmentally friendly workspaces.
- FSC and OSHPD certified components are also available

## CONSTRUCTION

- Cabinets are constructed of 3/4" thick industrial grade 40-50lb substrate, double-faced melamine
- All exposed edges are covered with 2mm PVC edge banding
- All panels are connected with hafele mini-fix cam hidden fastener system
- All cabinets are rail mounted for ease of install
- Work surfaces are constructed of 1 1/16" thick high-pressure laminate

# LEGEND



## FOR MORE INFORMATION

<https://bim.southwestsolutions.com>

## MODULAR CASEWORK ROOM SEGMENTS

Copyright 2017 Southwest Solutions Group. This material is proprietary and confidential and the disclosure, reproduction (by photocopy, film, blueprint or otherwise) or incorporation into any information retrieval system without first receiving written approval from Southwest Solutions Group is expressly prohibited by law.

Approved By

Date

Drawn by DHaynal

Salesperson SSG

Scale 1/2" = 1'-0"

RN	DATE	DESCRIPTION
----	------	-------------

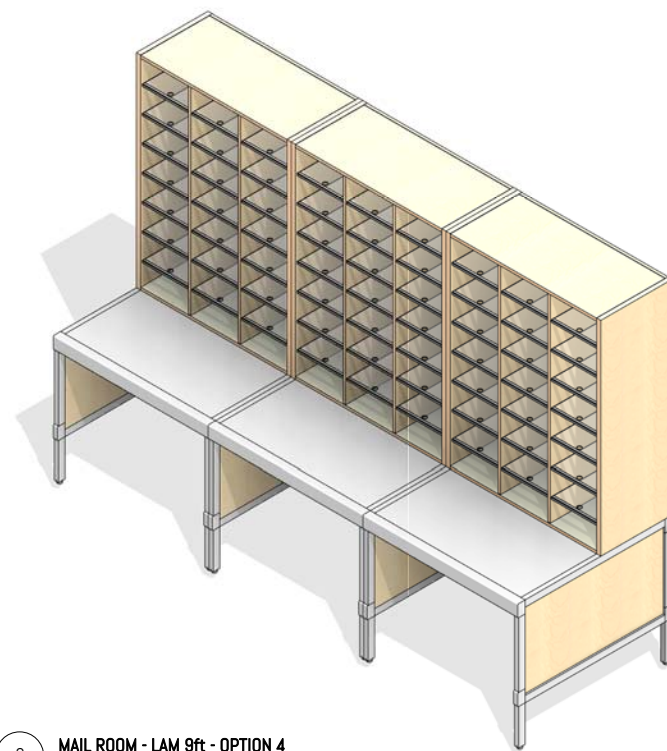
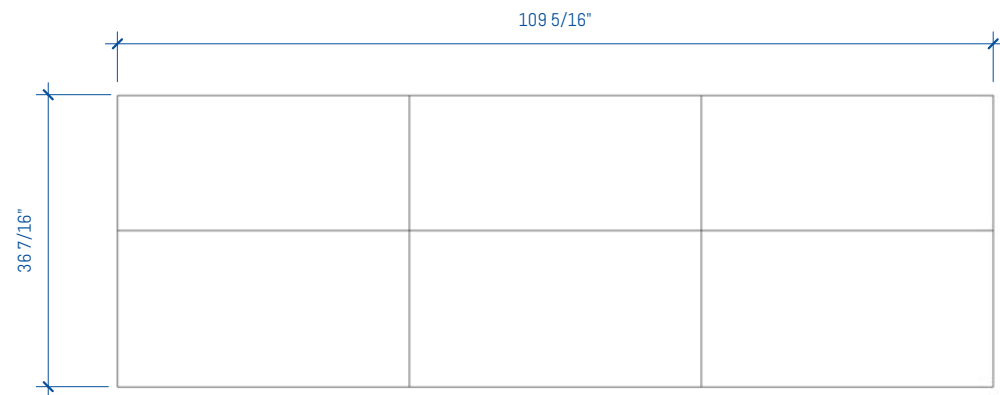
### SSG REVISION SCHEDULE

## MAIL ROOM - LAM 9ft - OPTION 3

SHEET NUMBER

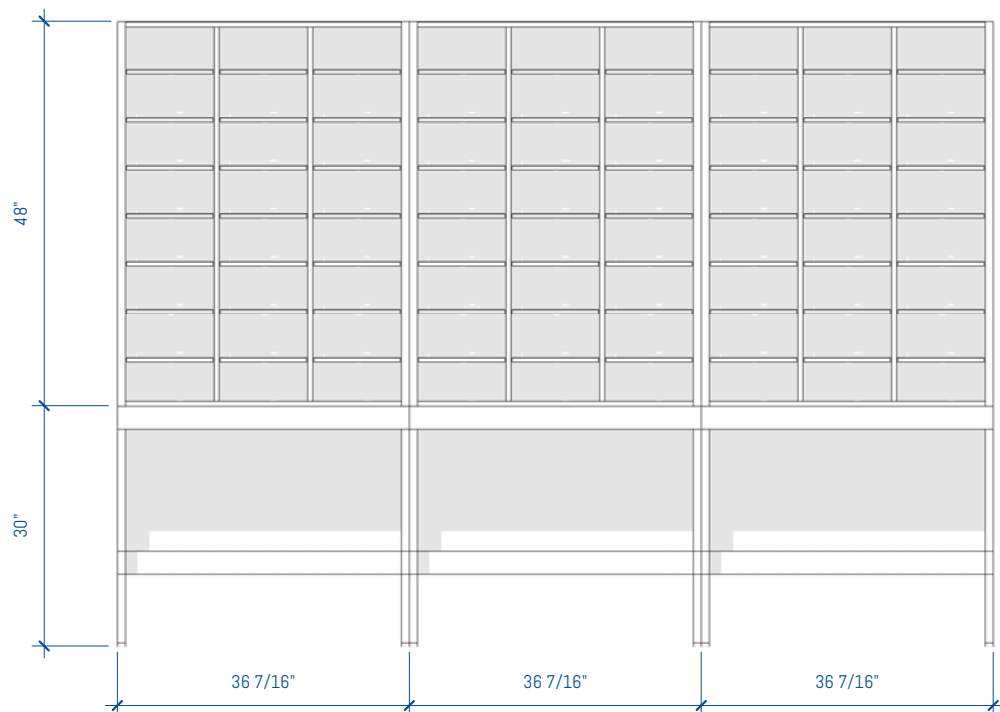
MR-19 of MR-30



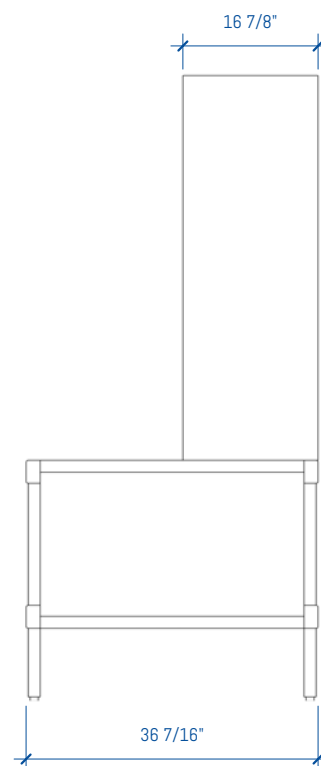


4 MAIL ROOM - LAM 9ft - OPTION 4  
1/2" = 1'-0"

3 MAIL ROOM - LAM 9ft - OPTION 4



2 MAIL ROOM - LAM 9ft - OPTION 4 - Front  
1/2" = 1'-0"



1 MAIL ROOM - LAM 9ft - OPTION 4 - Side  
1/2" = 1'-0"

# GENERAL NOTES

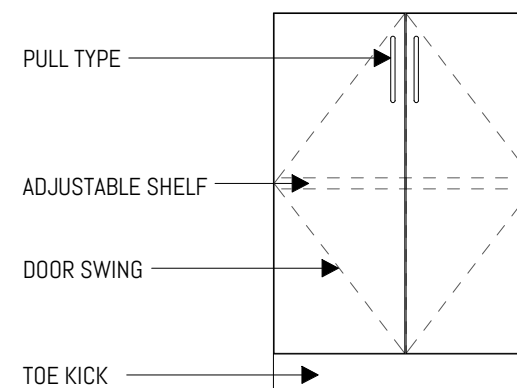
## SUSTAINABILITY

- Particleboard and MDF fabricated from recycled wood waste material
- Cardboard packaging made from recycled materials
- Unusable pallets are recycled
- All aluminum scrap is recycled
- All adhesives used are water-based
- Products meet low VOC standards
- Powder coat paint is used on all metal surfaces
- Greenguard Gold Certified to provide safe, quality, environmentally friendly workspaces.
- FSC and OSHPD certified components are also available

## CONSTRUCTION

- Cabinets are constructed of 3/4" thick industrial grade 40-50lb substrate, double-faced melamine
- All exposed edges are covered with 2mm PVC edge banding
- All panels are connected with hafele mini-fix cam hidden fastener system
- All cabinets are rail mounted for ease of install
- Work surfaces are constructed of 1 1/16" thick high-pressure laminate

# LEGEND



## FOR MORE INFORMATION

<https://bim.southwestsolutions.com>

## MODULAR CASEWORK ROOM SEGMENTS

Copyright 2017 Southwest Solutions Group. This material is proprietary and confidential and the disclosure, reproduction (by photocopy, film, blueprint or otherwise) or incorporation into any information retrieval system without first receiving written approval from Southwest Solutions Group is expressly prohibited by law.

Approved By

Date

Drawn by DHaynal

Salesperson SSG

Scale 1/2" = 1'-0"

RN	DATE	DESCRIPTION
<b>SSG REVISION SCHEDULE</b>		

MAIL ROOM - LAM 9ft  
- OPTION 4

SHEET NUMBER

MR-20 of MR-30

# GENERAL NOTES

## SUSTAINABILITY

- Particleboard and MDF fabricated from recycled wood waste material
- Cardboard packaging made from recycled materials
- Unusable pallets are recycled
- All aluminum scrap is recycled
- All adhesives used are water-based
- Products meet low VOC standards
- Powder coat paint is used on all metal surfaces
- Greenguard Gold Certified to provide safe, quality, environmentally friendly workspaces.
- FSC and OSHPD certified components are also available

## CONSTRUCTION

- Cabinets are constructed of 3/4" thick industrial grade 40-50lb substrate, double-faced melamine
- All exposed edges are covered with 2mm PVC edge banding
- All panels are connected with hafele mini-fix cam hidden fastener system
- All cabinets are rail mounted for ease of install
- Work surfaces are constructed of 1 1/16" thick high-pressure laminate

## MODULAR CASEWORK ROOM SEGMENTS

Copyright 2017 Southwest Solutions Group. This material is proprietary and confidential and the disclosure, reproduction (by photocopy, film, blueprint or otherwise) or incorporation into any information retrieval system without first receiving written approval from Southwest Solutions Group is expressly prohibited by law.

Approved By

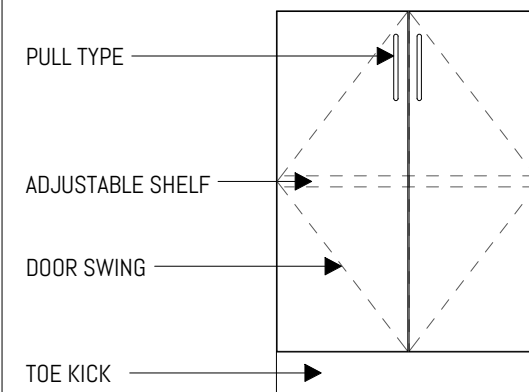
Date

Drawn by DHaynal

Salesperson SSG

Scale 1/2" = 1'-0"

# LEGEND



## FOR MORE INFORMATION

<https://bim.southwestsolutions.com>

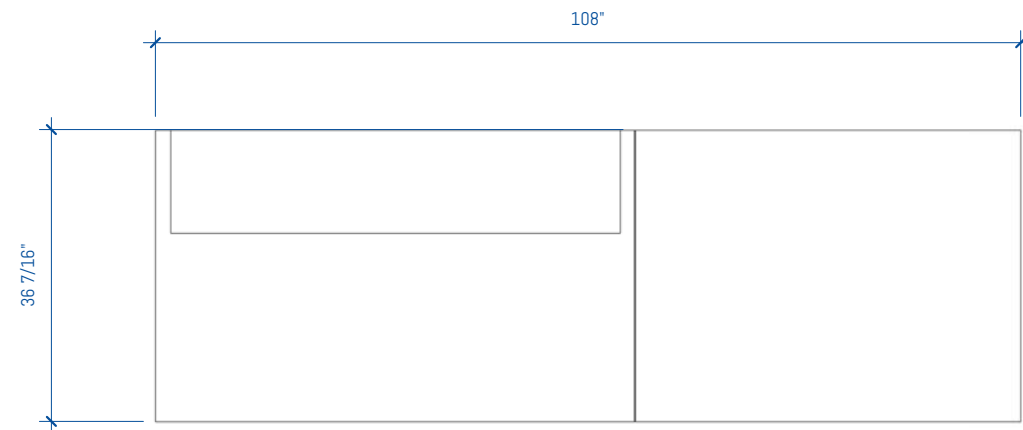
RN	DATE	DESCRIPTION
----	------	-------------

**SSG REVISION SCHEDULE**

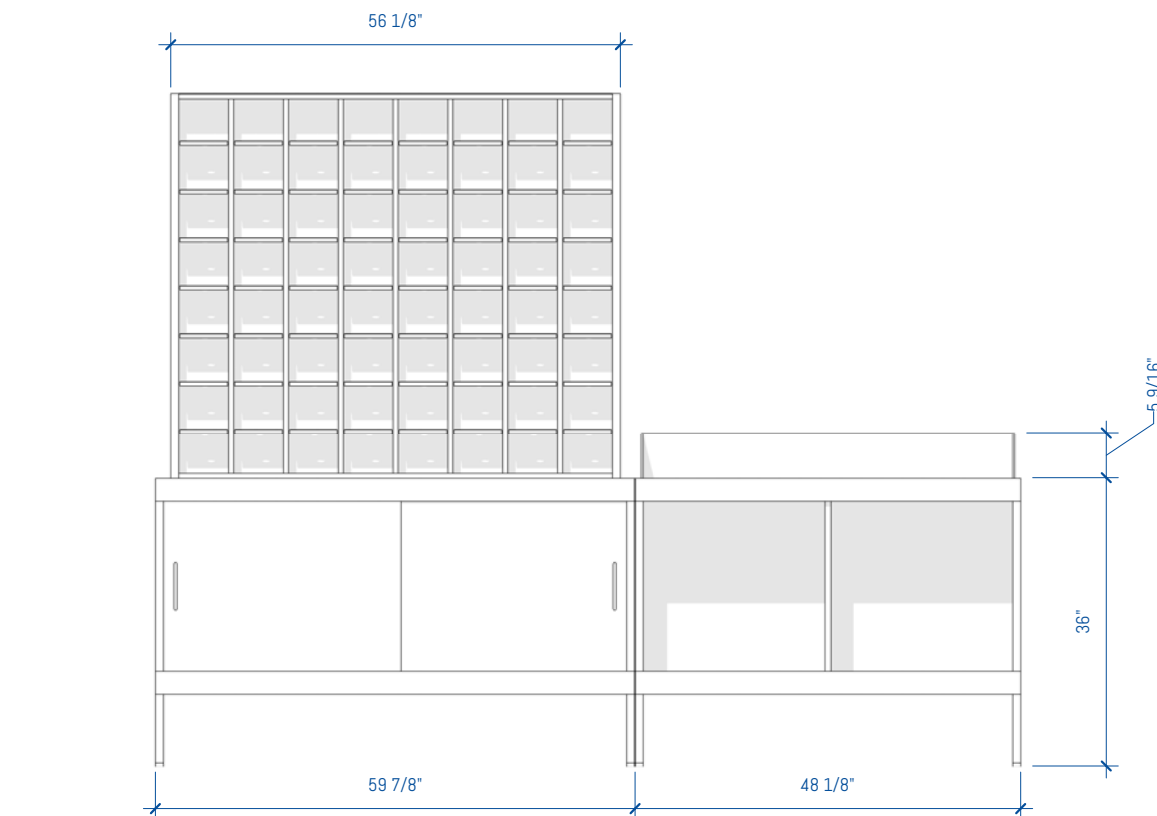
## MAIL ROOM - LAM 9ft - OPTION 5

SHEET NUMBER

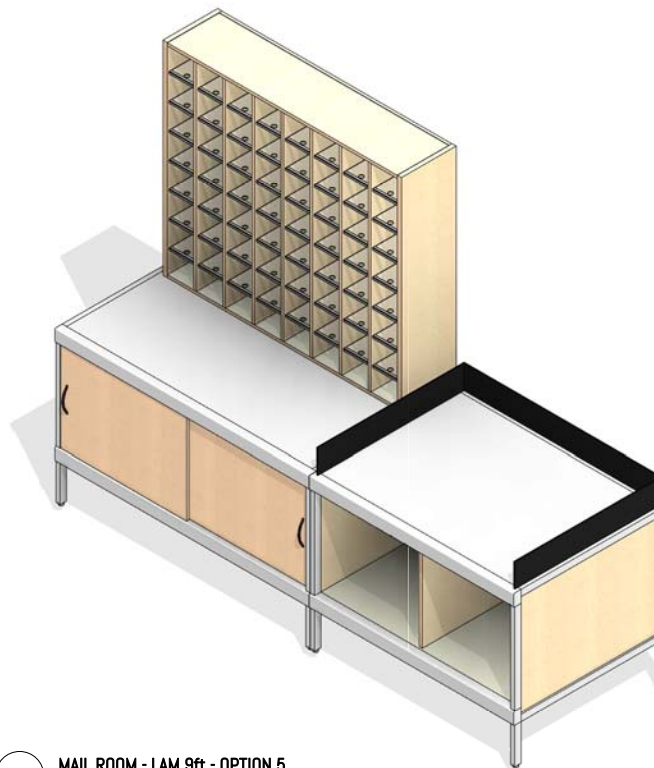
### MR-21 of MR-30



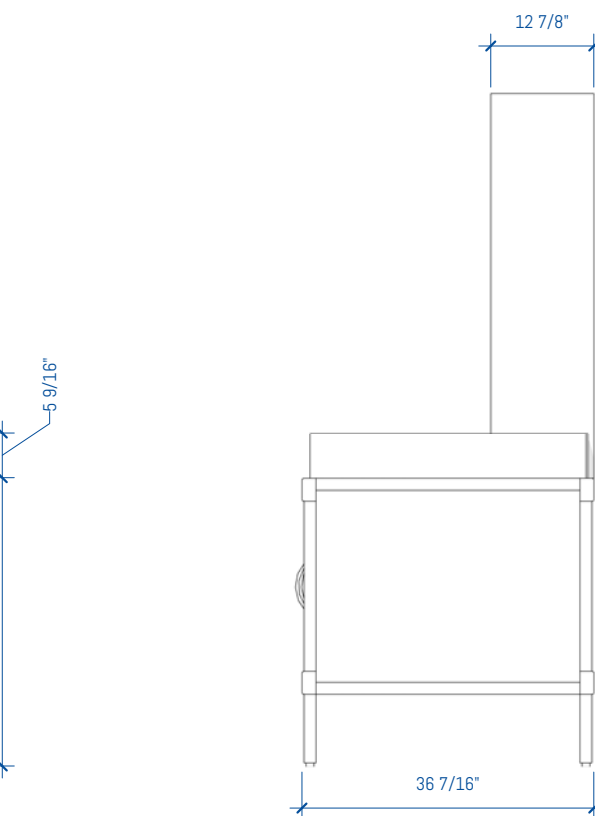
4 MAIL ROOM - LAM 9ft - OPTION 5  
1/2" = 1'-0"



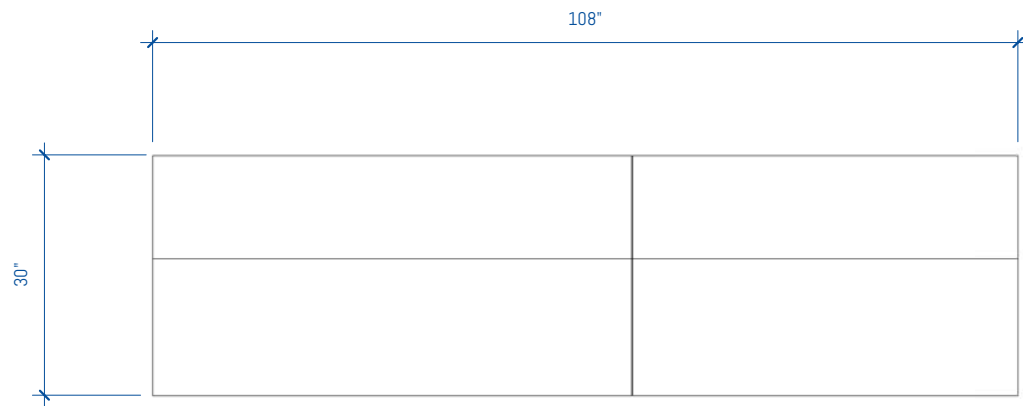
2 MAIL ROOM - LAM 9ft - OPTION 5 - Front  
1/2" = 1'-0"



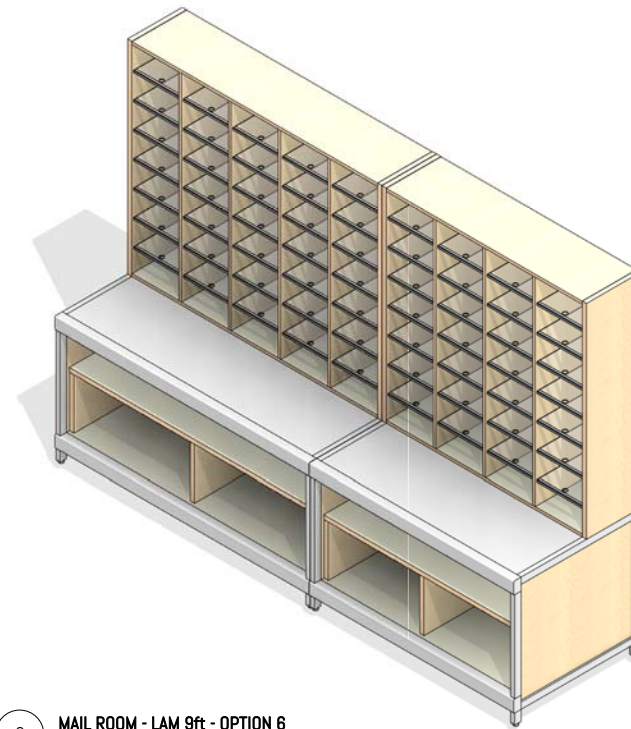
3 MAIL ROOM - LAM 9ft - OPTION 5



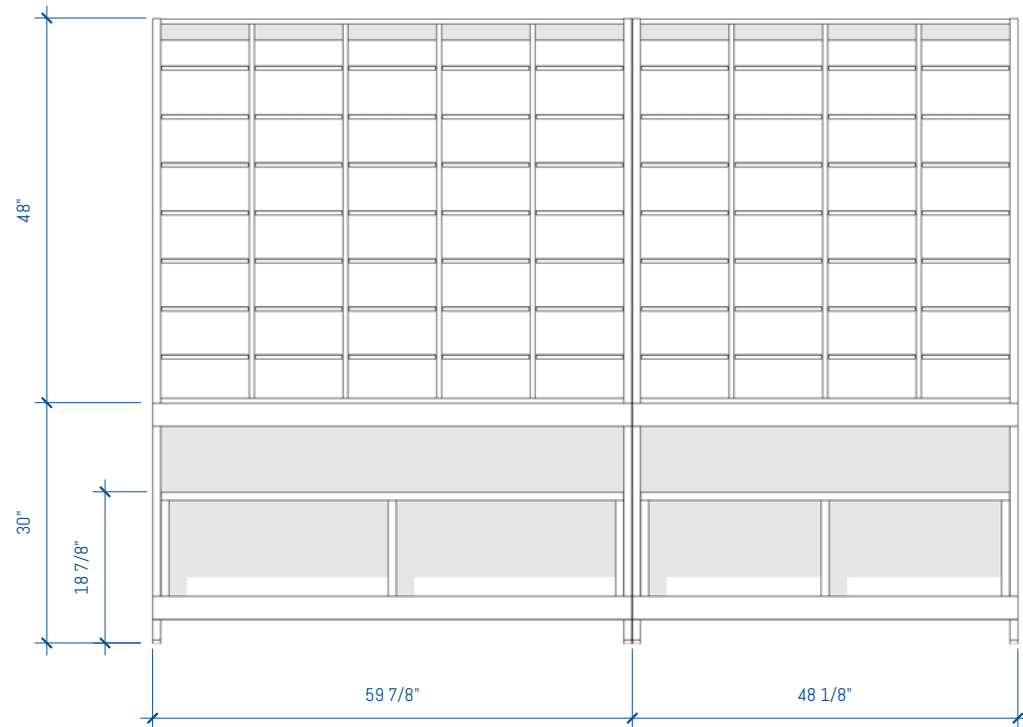
1 MAIL ROOM - LAM 9ft - OPTION 5 - Side  
1/2" = 1'-0"



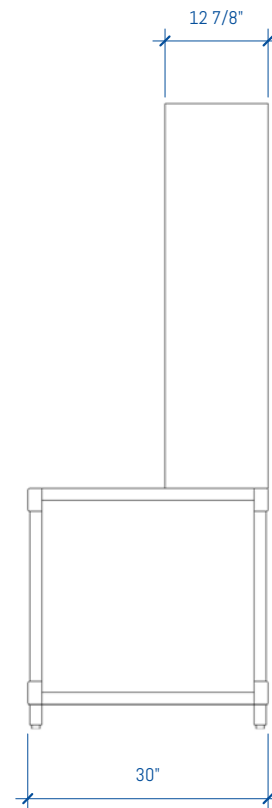
4 MAIL ROOM - LAM 9ft - OPTION 6  
1/2" = 1'-0"



3 MAIL ROOM - LAM 9ft - OPTION 6



2 MAIL ROOM - LAM 9ft - OPTION 6 - Front  
1/2" = 1'-0"



1 MAIL ROOM - LAM 9ft - OPTION 6 - Side  
1/2" = 1'-0"

# GENERAL NOTES

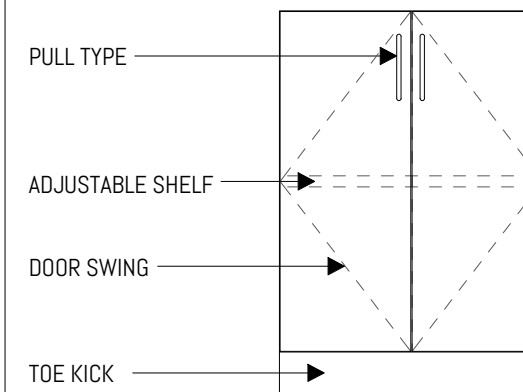
## SUSTAINABILITY

- Particleboard and MDF fabricated from recycled wood waste material
- Cardboard packaging made from recycled materials
- Unusable pallets are recycled
- All aluminum scrap is recycled
- All adhesives used are water-based
- Products meet low VOC standards
- Powder coat paint is used on all metal surfaces
- Greenguard Gold Certified to provide safe, quality, environmentally friendly workspaces.
- FSC and OSHPD certified components are also available

## CONSTRUCTION

- Cabinets are constructed of 3/4" thick industrial grade 40-50lb substrate, double-faced melamine
- All exposed edges are covered with 2mm PVC edge banding
- All panels are connected with hafele mini-fix cam hidden fastener system
- All cabinets are rail mounted for ease of install
- Work surfaces are constructed of 1 1/16" thick high-pressure laminate

# LEGEND



## FOR MORE INFORMATION

<https://bim.southwestsolutions.com>

## MODULAR CASEWORK ROOM SEGMENTS

Copyright 2017 Southwest Solutions Group. This material is proprietary and confidential and the disclosure, reproduction (by photocopy, film, blueprint or otherwise) or incorporation into any information retrieval system without first receiving written approval from Southwest Solutions Group is expressly prohibited by law.

Approved By

Date

Drawn by DHaynal

Salesperson SSG

Scale 1/2" = 1'-0"

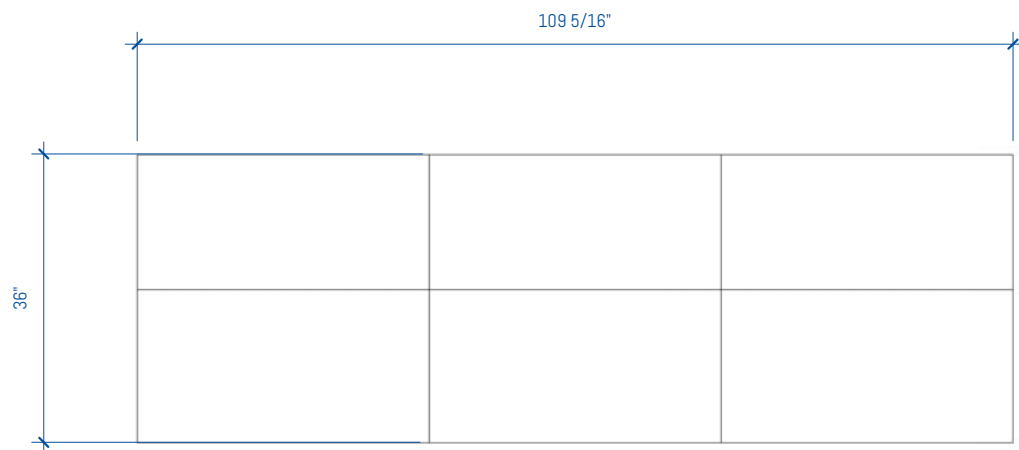
RN	DATE	DESCRIPTION
----	------	-------------

SSG REVISION SCHEDULE

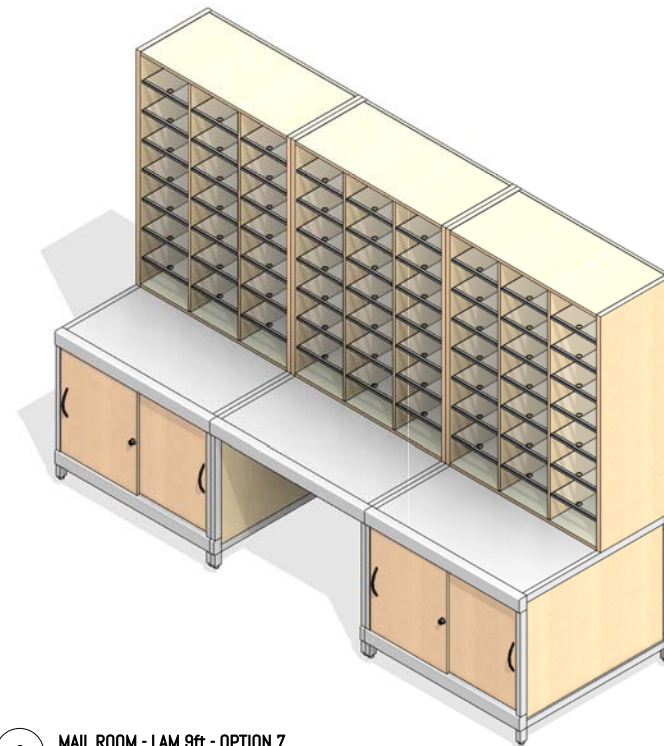
MAIL ROOM - LAM 9ft  
- OPTION 6

SHEET NUMBER

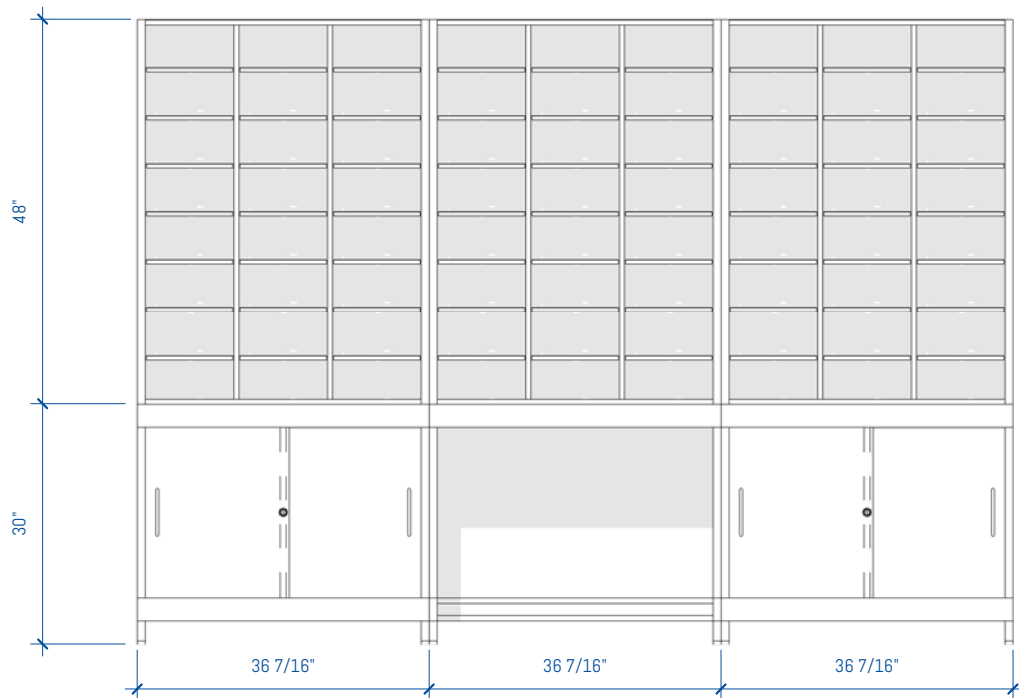
MR-22 of MR-30



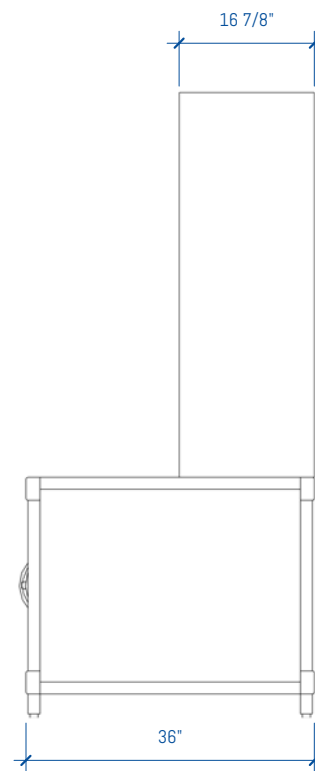
4 MAIL ROOM - LAM 9ft - OPTION 7  
1/2" = 1'-0"



3 MAIL ROOM - LAM 9ft - OPTION 7



2 MAIL ROOM - LAM 9ft - OPTION 7 - Front  
1/2" = 1'-0"



1 MAIL ROOM - LAM 9ft - OPTION 7 - Side  
1/2" = 1'-0"

# GENERAL NOTES

## SUSTAINABILITY

- Particleboard and MDF fabricated from recycled wood waste material
- Cardboard packaging made from recycled materials
- Unusable pallets are recycled
- All aluminum scrap is recycled
- All adhesives used are water-based
- Products meet low VOC standards
- Powder coat paint is used on all metal surfaces
- Greenguard Gold Certified to provide safe, quality, environmentally friendly workspaces.
- FSC and OSHPD certified components are also available

## CONSTRUCTION

- Cabinets are constructed of 3/4" thick industrial grade 40-50lb substrate, double-faced melamine
- All exposed edges are covered with 2mm PVC edge banding
- All panels are connected with hafele mini-fix cam hidden fastener system
- All cabinets are rail mounted for ease of install
- Work surfaces are constructed of 1 1/16" thick high-pressure laminate

## MODULAR CASEWORK ROOM SEGMENTS

Copyright 2017 Southwest Solutions Group. This material is proprietary and confidential and the disclosure, reproduction (by photocopy, film, blueprint or otherwise) or incorporation into any information retrieval system without first receiving written approval from Southwest Solutions Group is expressly prohibited by law.

Approved By

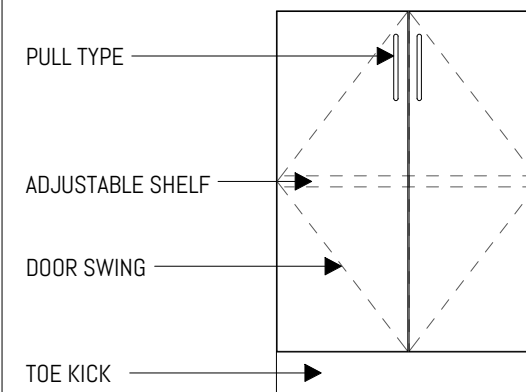
Date

Drawn by DHaynal

Salesperson SSG

Scale 1/2" = 1'-0"

# LEGEND



RN	DATE	DESCRIPTION
<b>SSG REVISION SCHEDULE</b>		

## MAIL ROOM - LAM 9ft - OPTION 7

SHEET NUMBER

MR-23 of MR-30

## FOR MORE INFORMATION

<https://bim.southwestsolutions.com>



# GENERAL NOTES

## SUSTAINABILITY

- Particleboard and MDF fabricated from recycled wood waste material
- Cardboard packaging made from recycled materials
- Unusable pallets are recycled
- All aluminum scrap is recycled
- All adhesives used are water-based
- Products meet low VOC standards
- Powder coat paint is used on all metal surfaces
- Greenguard Gold Certified to provide safe, quality, environmentally friendly workspaces.
- FSC and OSHPD certified components are also available

## CONSTRUCTION

- Cabinets are constructed of 3/4" thick industrial grade 40-50lb substrate, double-faced melamine
- All exposed edges are covered with 2mm PVC edge banding
- All panels are connected with hafele mini-fix cam hidden fastener system
- All cabinets are rail mounted for ease of install
- Work surfaces are constructed of 1 1/16" thick high-pressure laminate

## MODULAR CASEWORK ROOM SEGMENTS

Copyright 2017 Southwest Solutions Group. This material is proprietary and confidential and the disclosure, reproduction (by photocopy, film, blueprint or otherwise) or incorporation into any information retrieval system without first receiving written approval from Southwest Solutions Group is expressly prohibited by law.

Approved By

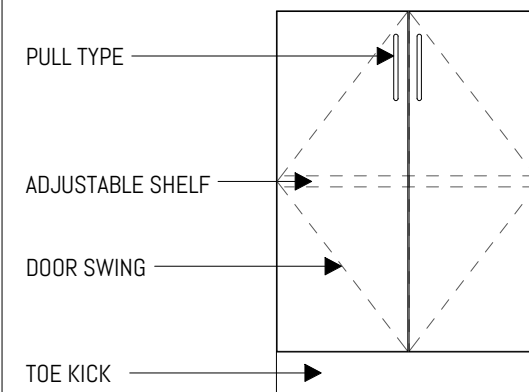
Date

Drawn by DHaynal

Salesperson SSG

Scale 1/2" = 1'-0"

# LEGEND



## FOR MORE INFORMATION

<https://bim.southwestsolutions.com>

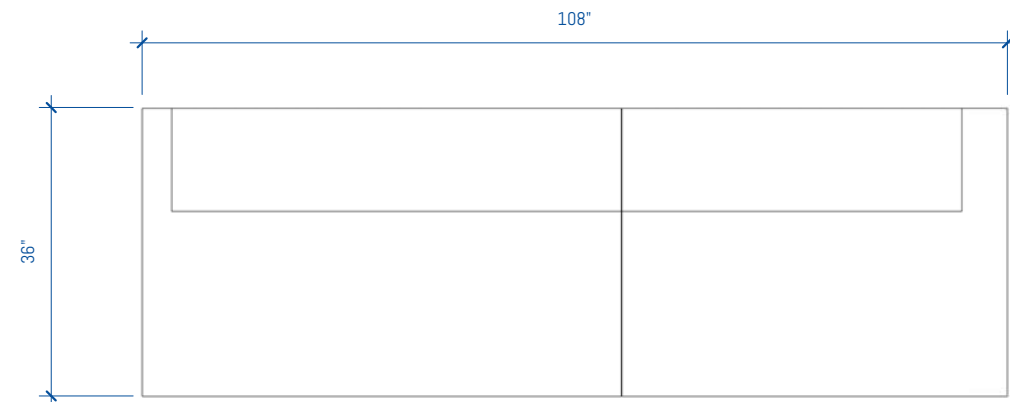
RN	DATE	DESCRIPTION
----	------	-------------

SSG REVISION SCHEDULE

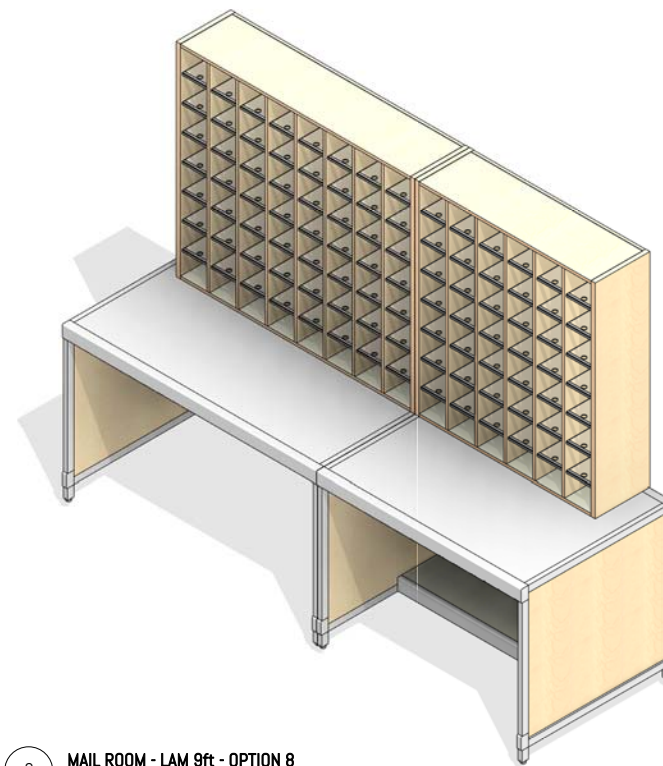
## MAIL ROOM - LAM 9ft - OPTION 8

SHEET NUMBER

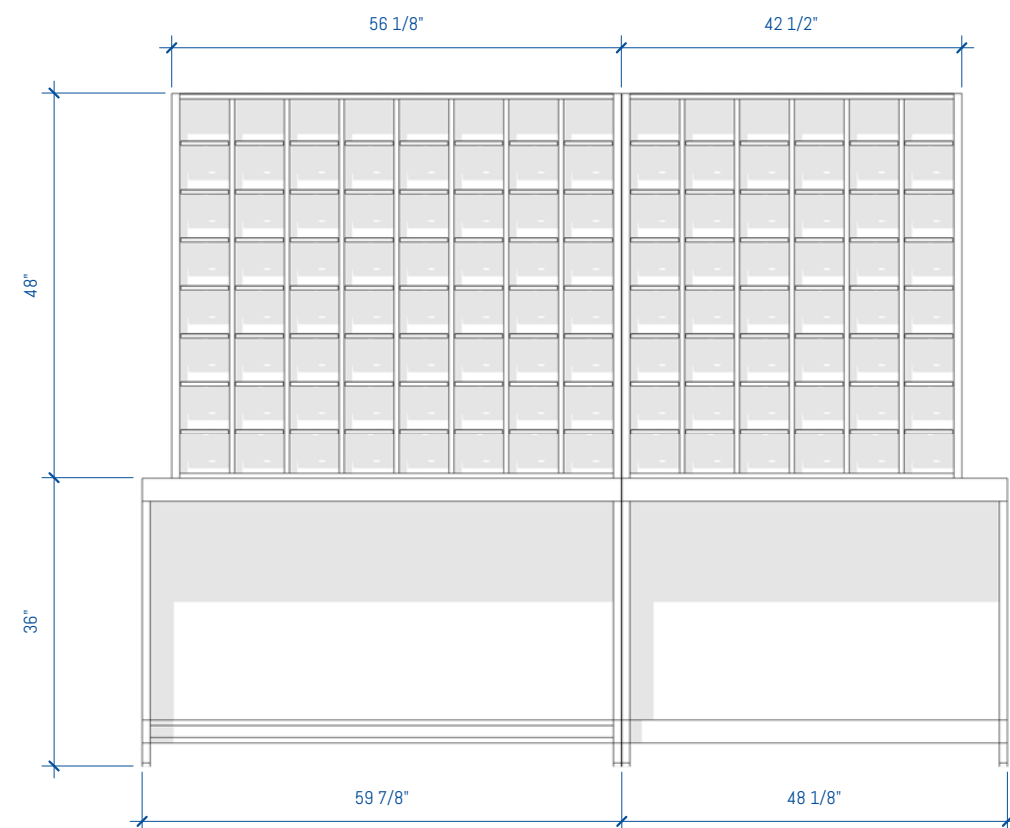
MR-24 of MR-30



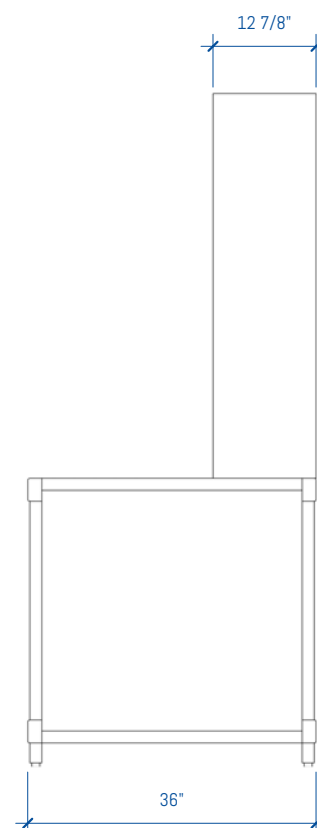
4 MAIL ROOM - LAM 9ft - OPTION 8  
1/2" = 1'-0"



3 MAIL ROOM - LAM 9ft - OPTION 8

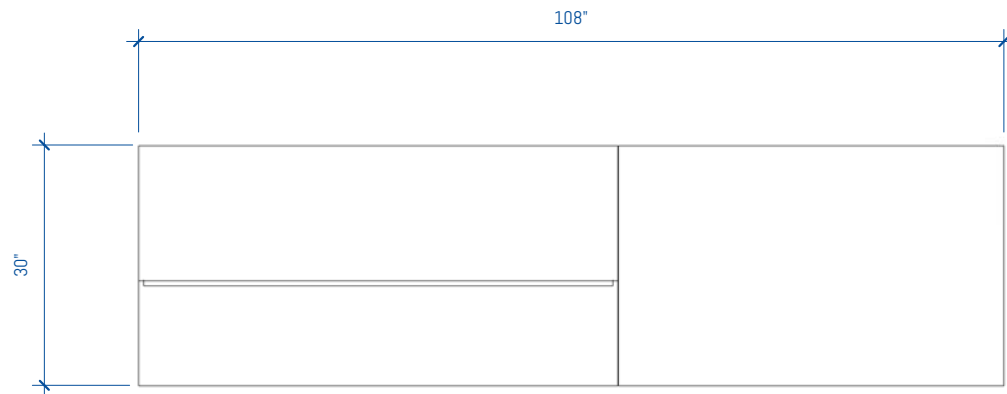


2 MAIL ROOM - LAM 9ft - OPTION 8 - Front  
1/2" = 1'-0"

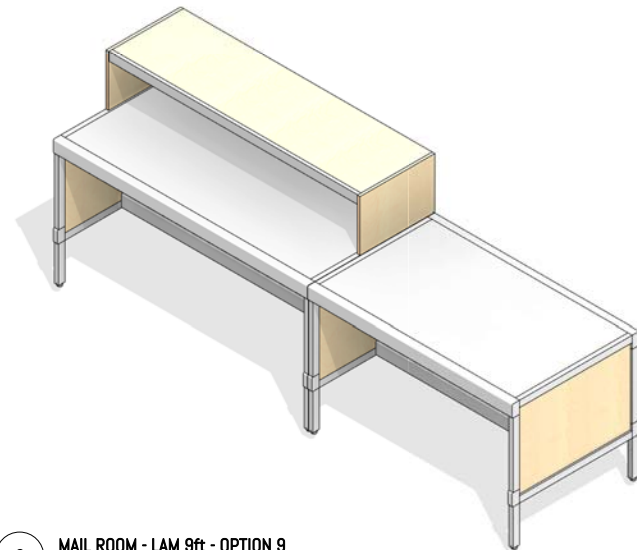


1 MAIL ROOM - LAM 9ft - OPTION 8 - Side  
1/2" = 1'-0"

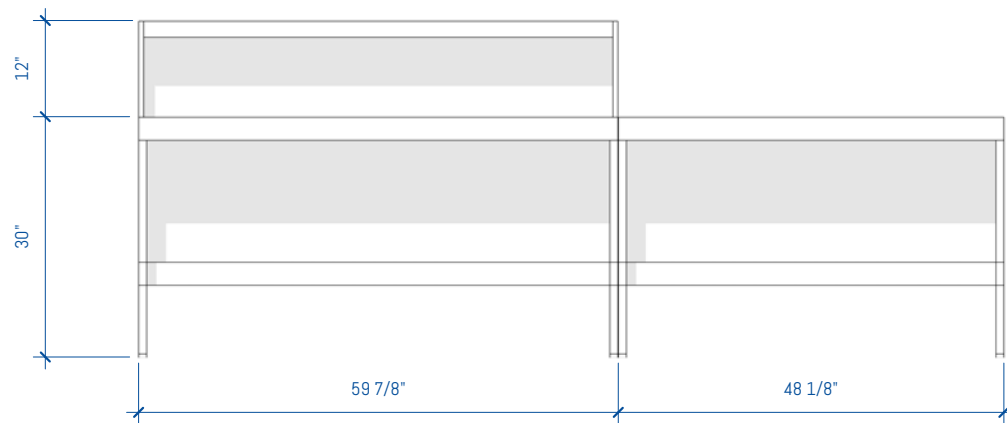




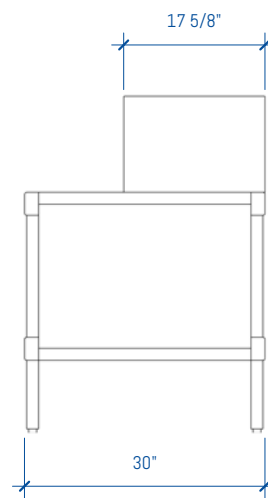
4 MAIL ROOM - LAM 9ft - OPTION 9  
1/2" = 1'-0"



3 MAIL ROOM - LAM 9ft - OPTION 9



2 MAIL ROOM - LAM 9ft - OPTION 9 - Front  
1/2" = 1'-0"



1 MAIL ROOM - LAM 9ft - OPTION 9 - Side  
1/2" = 1'-0"

# GENERAL NOTES

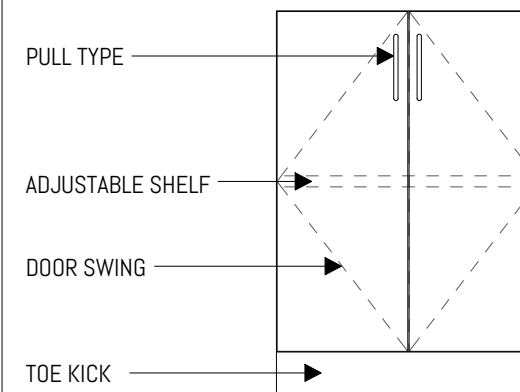
## SUSTAINABILITY

- Particleboard and MDF fabricated from recycled wood waste material
- Cardboard packaging made from recycled materials
- Unusable pallets are recycled
- All aluminum scrap is recycled
- All adhesives used are water-based
- Products meet low VOC standards
- Powder coat paint is used on all metal surfaces
- Greenguard Gold Certified to provide safe, quality, environmentally friendly workspaces.
- FSC and OSHPD certified components are also available

## CONSTRUCTION

- Cabinets are constructed of 3/4" thick industrial grade 40-50lb substrate, double-faced melamine
- All exposed edges are covered with 2mm PVC edge banding
- All panels are connected with hafele mini-fix cam hidden fastener system
- All cabinets are rail mounted for ease of install
- Work surfaces are constructed of 1 1/16" thick high-pressure laminate

# LEGEND



## FOR MORE INFORMATION

<https://bim.southwestsolutions.com>

## MODULAR CASEWORK ROOM SEGMENTS

Copyright 2017 Southwest Solutions Group. This material is proprietary and confidential and the disclosure, reproduction (by photocopy, film, blueprint or otherwise) or incorporation into any information retrieval system without first receiving written approval from Southwest Solutions Group is expressly prohibited by law.

Approved By

Date

Drawn by DHaynal

Salesperson SSG

Scale 1/2" = 1'-0"

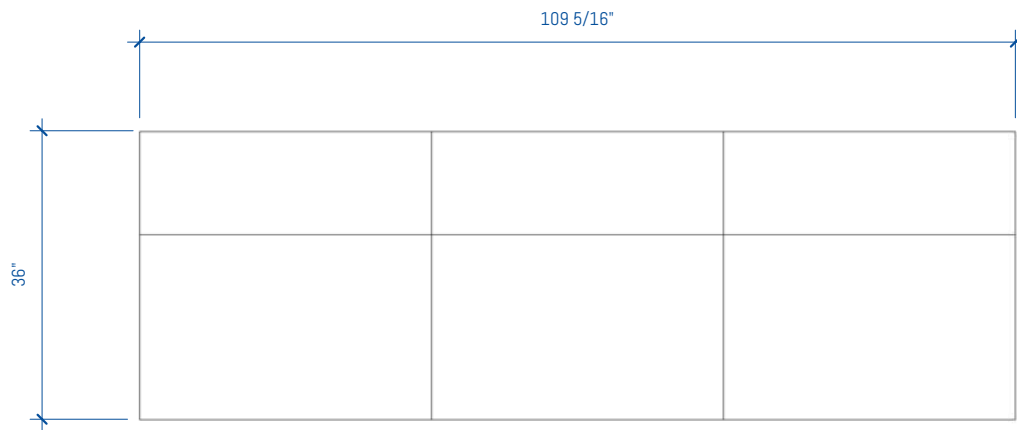
RN	DATE	DESCRIPTION
----	------	-------------

SSG REVISION SCHEDULE

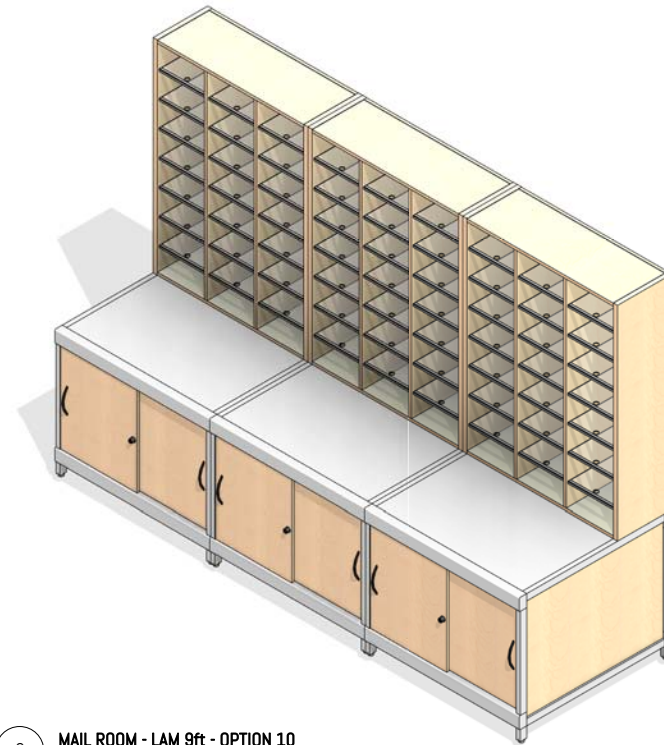
MAIL ROOM - LAM 9ft  
- OPTION 9

SHEET NUMBER

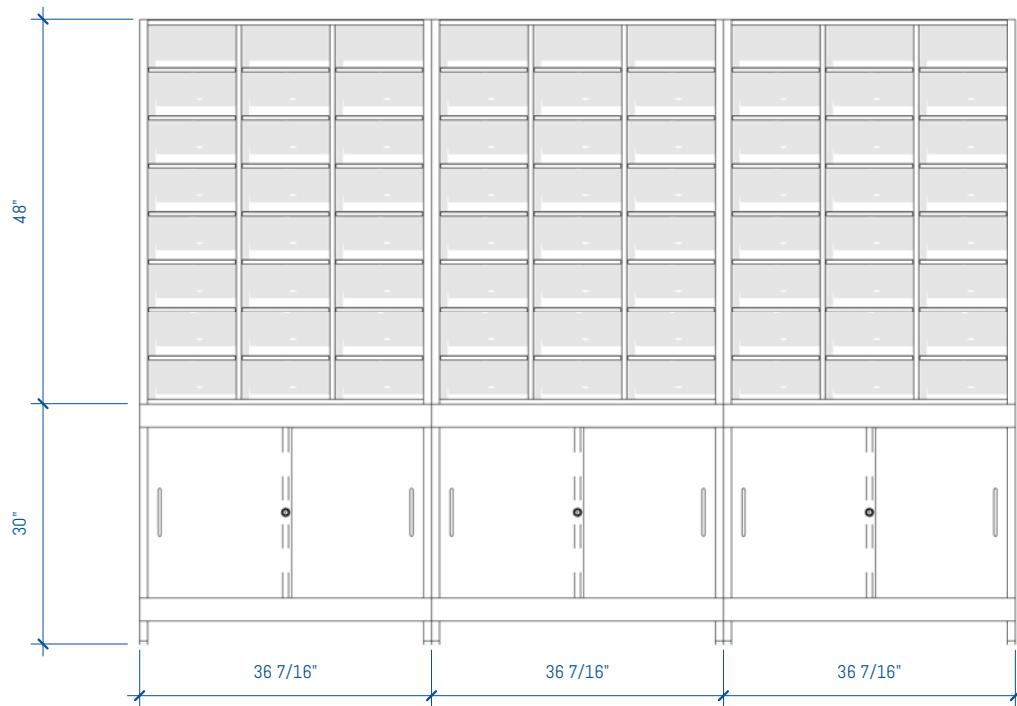
MR-25 of MR-30



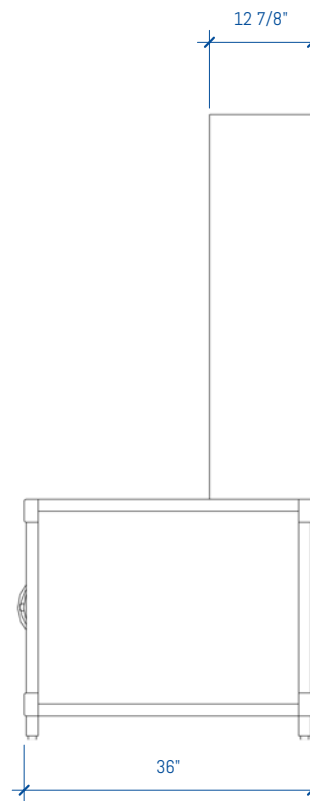
4 MAIL ROOM - LAM 9ft - OPTION 10  
1/2" = 1'-0"



3 MAIL ROOM - LAM 9ft - OPTION 10



2 MAIL ROOM - LAM 9ft - OPTION 10 - Front  
1/2" = 1'-0"



1 MAIL ROOM - LAM 9ft - OPTION 10 - Side  
1/2" = 1'-0"

# GENERAL NOTES

## SUSTAINABILITY

- Particleboard and MDF fabricated from recycled wood waste material
- Cardboard packaging made from recycled materials
- Unusable pallets are recycled
- All aluminum scrap is recycled
- All adhesives used are water-based
- Products meet low VOC standards
- Powder coat paint is used on all metal surfaces
- Greenguard Gold Certified to provide safe, quality, environmentally friendly workspaces.
- FSC and OSHPD certified components are also available

## CONSTRUCTION

- Cabinets are constructed of 3/4" thick industrial grade 40-50lb substrate, double-faced melamine
- All exposed edges are covered with 2mm PVC edge banding
- All panels are connected with hafele mini-fix cam hidden fastener system
- All cabinets are rail mounted for ease of install
- Work surfaces are constructed of 1 1/16" thick high-pressure laminate

## MODULAR CASEWORK ROOM SEGMENTS

Copyright 2017 Southwest Solutions Group. This material is proprietary and confidential and the disclosure, reproduction (by photocopy, film, blueprint or otherwise) or incorporation into any information retrieval system without first receiving written approval from Southwest Solutions Group is expressly prohibited by law.

Approved By

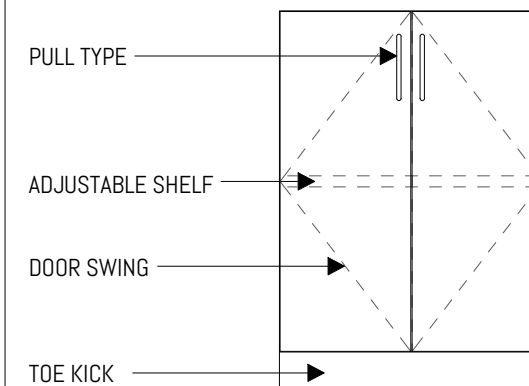
Date

Drawn by DHaynal

Salesperson SSG

Scale 1/2" = 1'-0"

# LEGEND



RN	DATE	DESCRIPTION
<b>SSG REVISION SCHEDULE</b>		

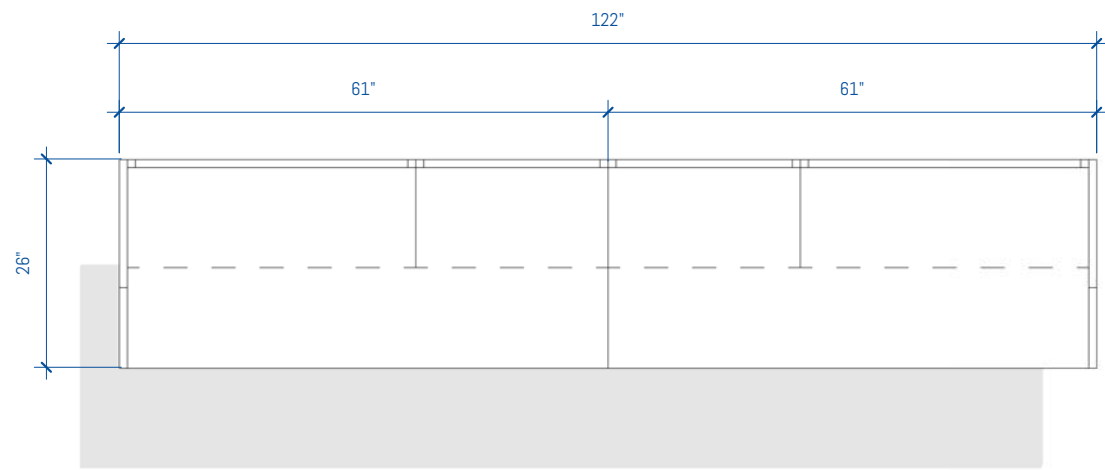
## MAIL ROOM - LAM 9ft - OPTION 10

SHEET NUMBER

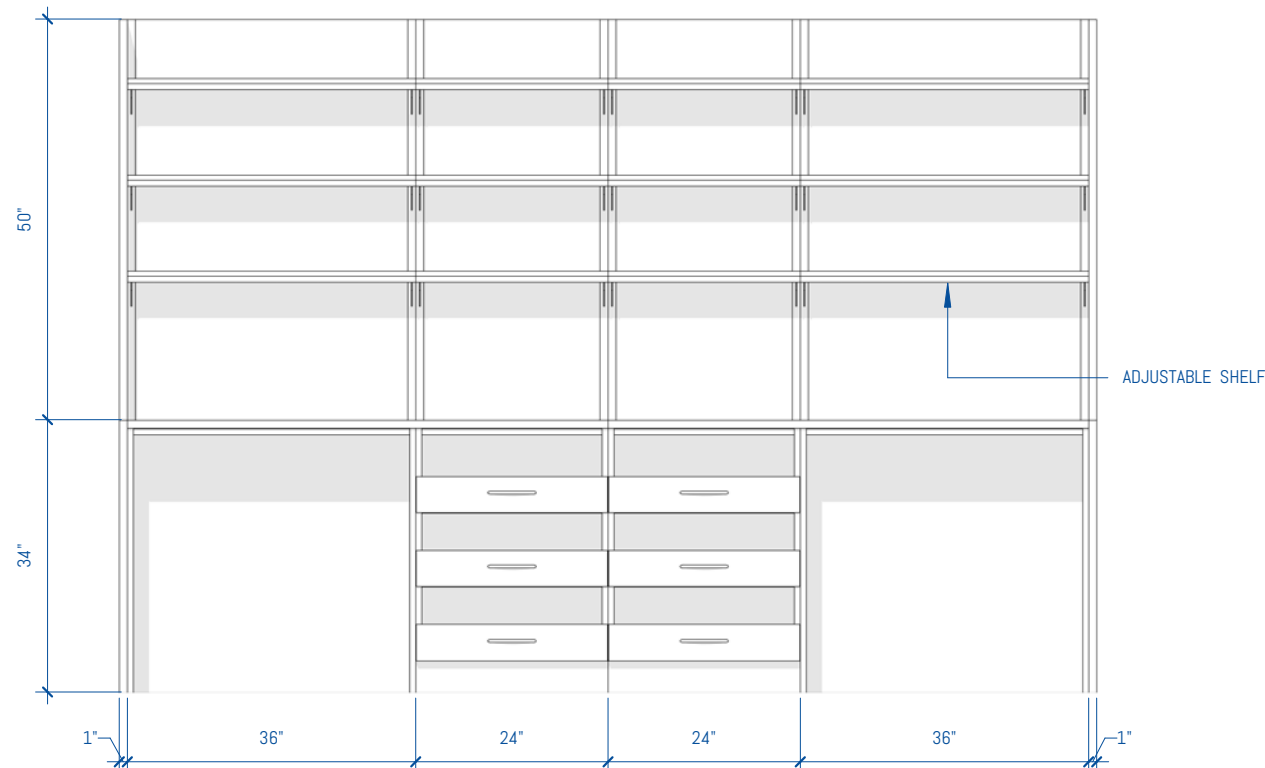
MR-26 of MR-30

## FOR MORE INFORMATION

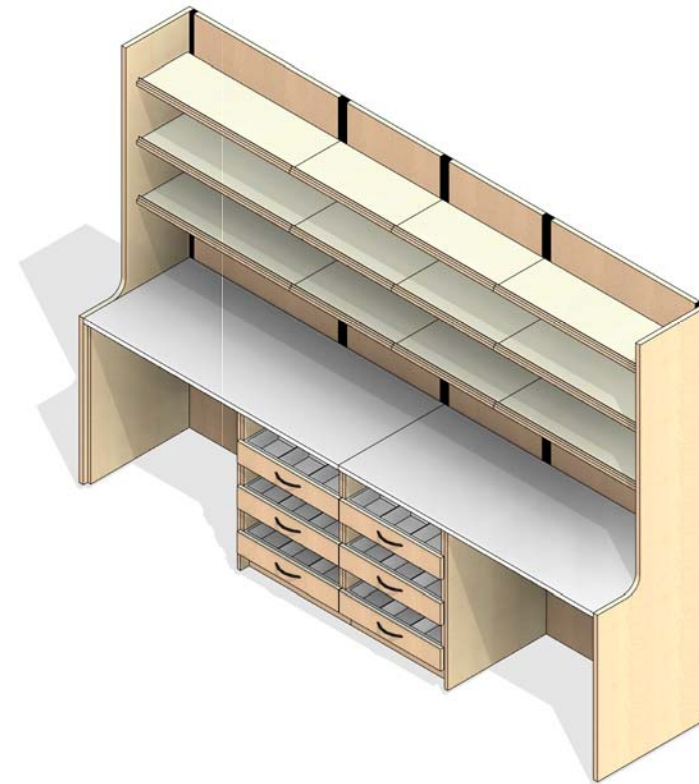
<https://bim.southwestsolutions.com>



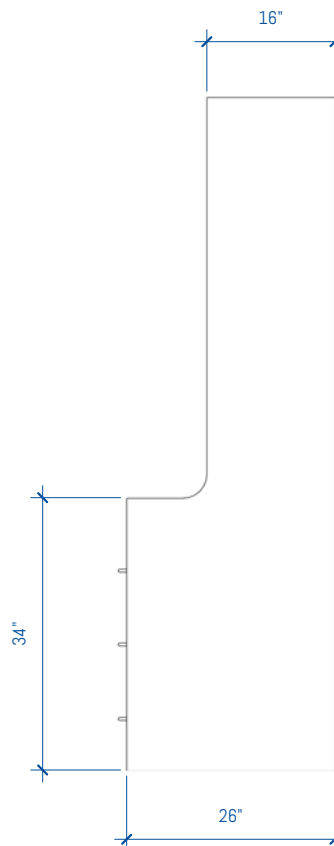
4 PHARMACY ROOM - LAM 10ft - OPTION 1  
1/2" = 1'-0"



2 PHARMACY ROOM - LAM 10ft - OPTION 1 - FRONT  
1/2" = 1'-0"



3 PHARMACY ROOM - LAM 10ft - OPTION 1



1 PHARMACY ROOM - LAM 10ft - OPTION 1 - SIDE  
1/2" = 1'-0"

# GENERAL NOTES

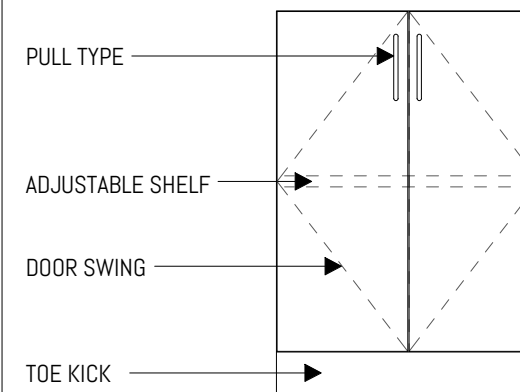
## SUSTAINABILITY

- Particleboard and MDF fabricated from recycled wood waste material
- Cardboard packaging made from recycled materials
- Unusable pallets are recycled
- All aluminum scrap is recycled
- All adhesives used are water-based
- Products meet low VOC standards
- Powder coat paint is used on all metal surfaces
- Greenguard Gold Certified to provide safe, quality, environmentally friendly workspaces.
- FSC and OSHPD certified components are also available

## CONSTRUCTION

- Cabinets are constructed of 3/4" thick industrial grade 40-50lb substrate, double-faced melamine
- All exposed edges are covered with 2mm PVC edge banding
- All panels are connected with hafele mini-fix cam hidden fastener system
- All cabinets are rail mounted for ease of install
- Work surfaces are constructed of 1 1/16" thick high-pressure laminate

# LEGEND



## FOR MORE INFORMATION

<https://bim.southwestsolutions.com>

## MODULAR CASEWORK ROOM SEGMENTS

Copyright 2017 Southwest Solutions Group. This material is proprietary and confidential and the disclosure, reproduction (by photocopy, film, blueprint or otherwise) or incorporation into any information retrieval system without first receiving written approval from Southwest Solutions Group is expressly prohibited by law.

Approved By

Date

Drawn by DHaynal

Salesperson SSG

Scale 1/2" = 1'-0"

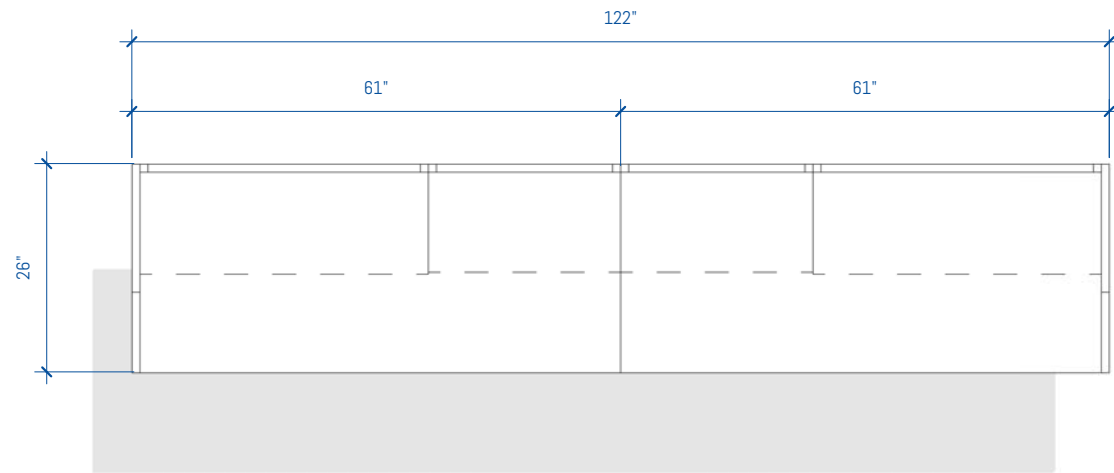
RN	DATE	DESCRIPTION
----	------	-------------

### SSG REVISION SCHEDULE

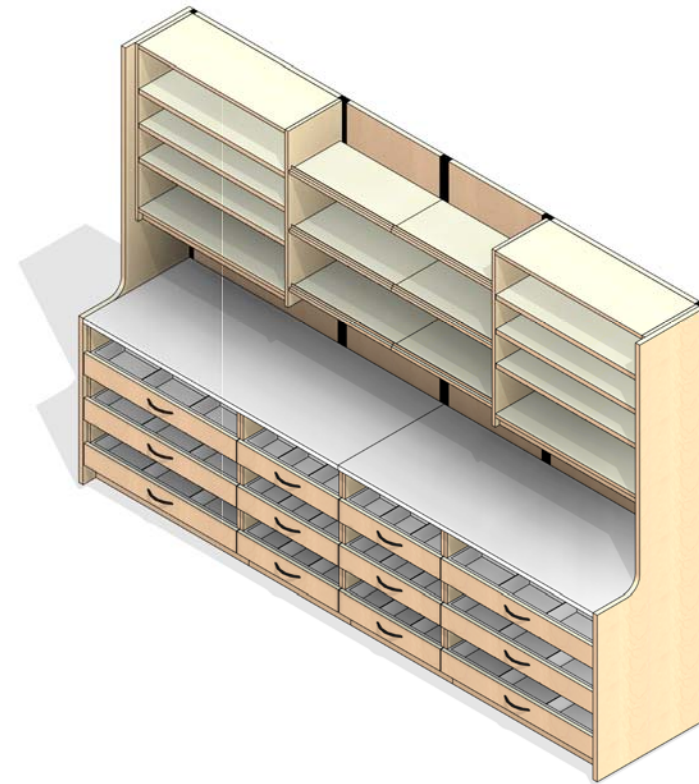
## PHARMACY ROOM - LAM 10ft - OPTION 1

SHEET NUMBER

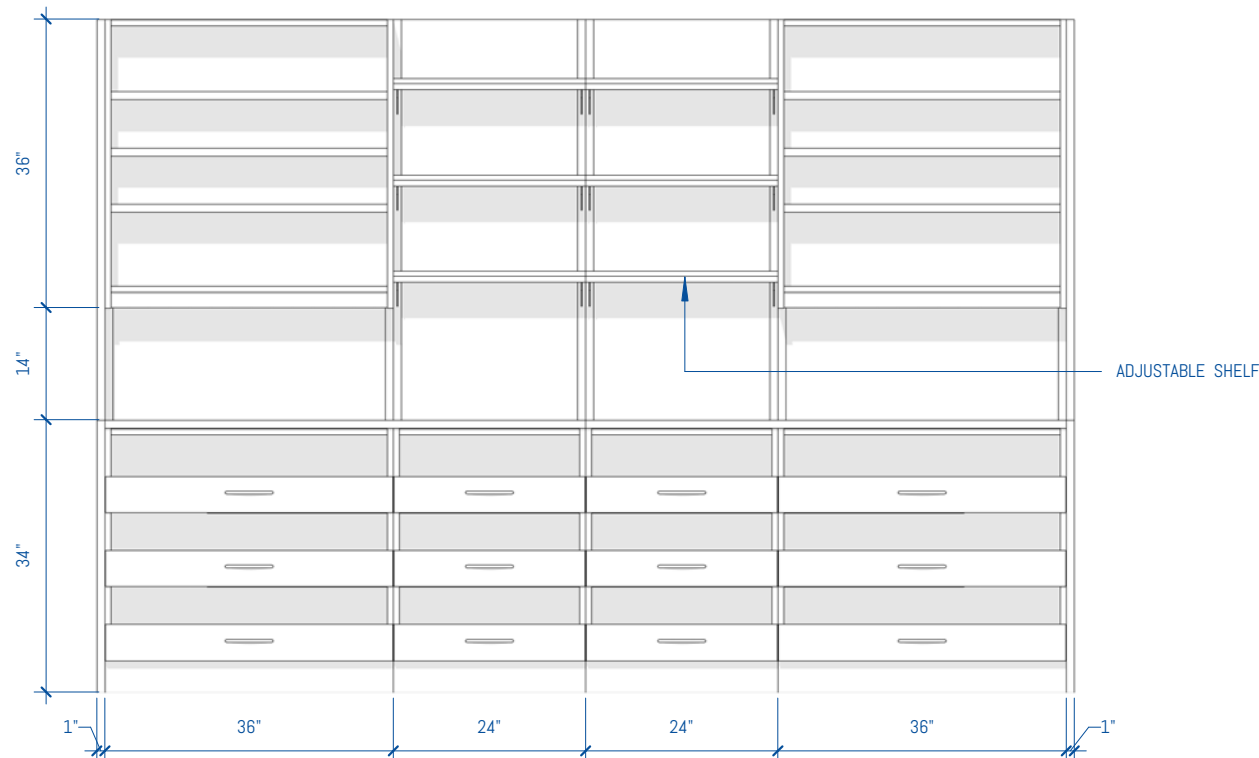
PR-27 of PR-30



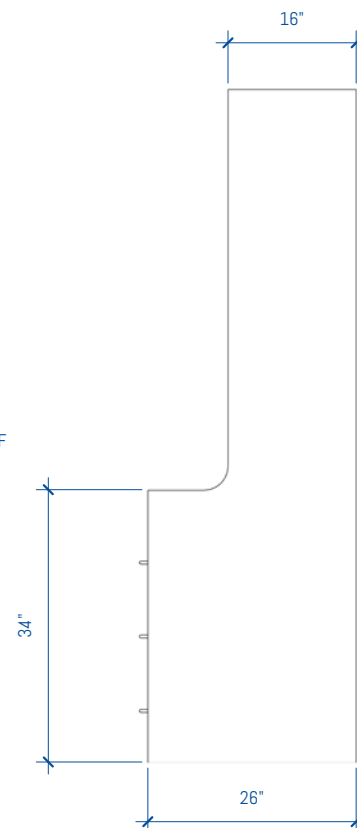
4 PHARMACY ROOM - LAM 10ft - OPTION 2  
1/2" = 1'-0"



3 PHARMACY ROOM - LAM 10ft - OPTION 2



2 PHARMACY ROOM - LAM 10ft - OPTION 2 - FRONT  
1/2" = 1'-0"



1 PHARMACY ROOM - LAM 10ft - OPTION 2 - SIDE  
1/2" = 1'-0"

# GENERAL NOTES

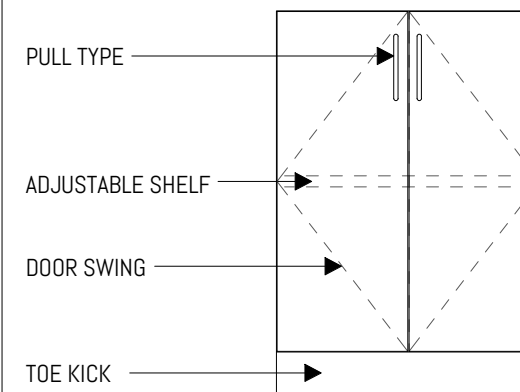
## SUSTAINABILITY

- Particleboard and MDF fabricated from recycled wood waste material
- Cardboard packaging made from recycled materials
- Unusable pallets are recycled
- All aluminum scrap is recycled
- All adhesives used are water-based
- Products meet low VOC standards
- Powder coat paint is used on all metal surfaces
- Greenguard Gold Certified to provide safe, quality, environmentally friendly workspaces.
- FSC and OSHPD certified components are also available

## CONSTRUCTION

- Cabinets are constructed of 3/4" thick industrial grade 40-50lb substrate, double-faced melamine
- All exposed edges are covered with 2mm PVC edge banding
- All panels are connected with hafele mini-fix cam hidden fastener system
- All cabinets are rail mounted for ease of install
- Work surfaces are constructed of 1 1/16" thick high-pressure laminate

# LEGEND



## FOR MORE INFORMATION

<https://bim.southwestsolutions.com>

## MODULAR CASEWORK ROOM SEGMENTS

Copyright 2017 Southwest Solutions Group. This material is proprietary and confidential and the disclosure, reproduction (by photocopy, film, blueprint or otherwise) or incorporation into any information retrieval system without first receiving written approval from Southwest Solutions Group is expressly prohibited by law.

Approved By

Date

Drawn by DHaynal

Salesperson SSG

Scale 1/2" = 1'-0"

RN	DATE	DESCRIPTION
----	------	-------------

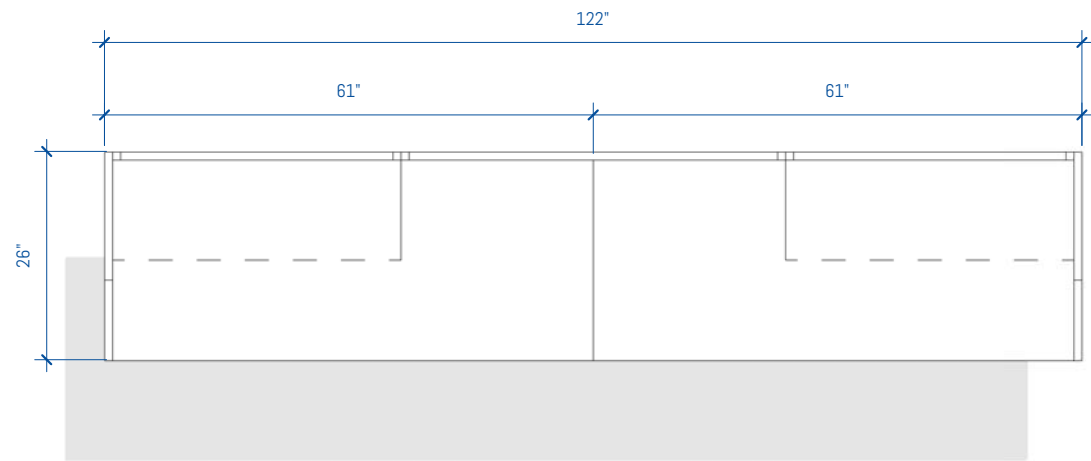
### SSG REVISION SCHEDULE

## PHARMACY ROOM - LAM 10ft - OPTION 2

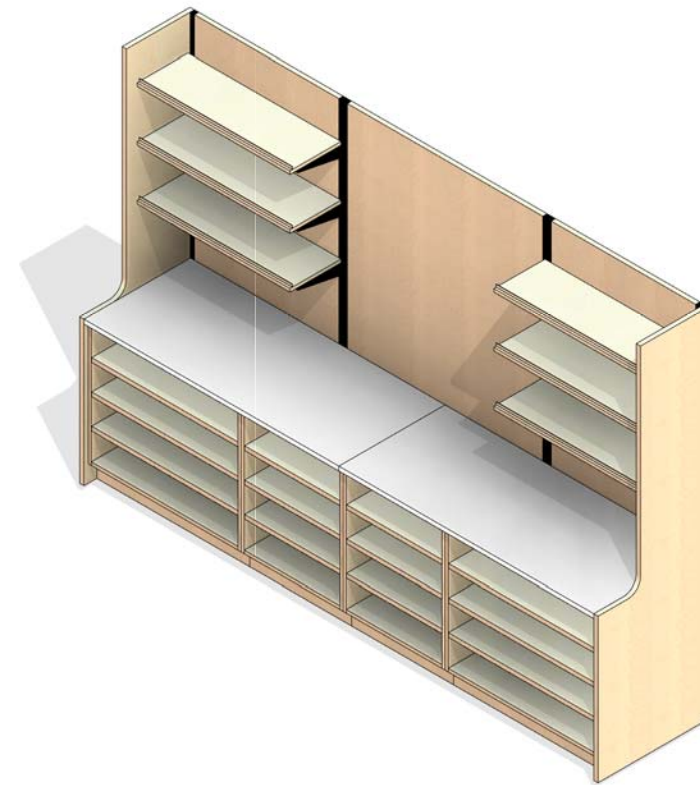
SHEET NUMBER

PR-28 of PR-30

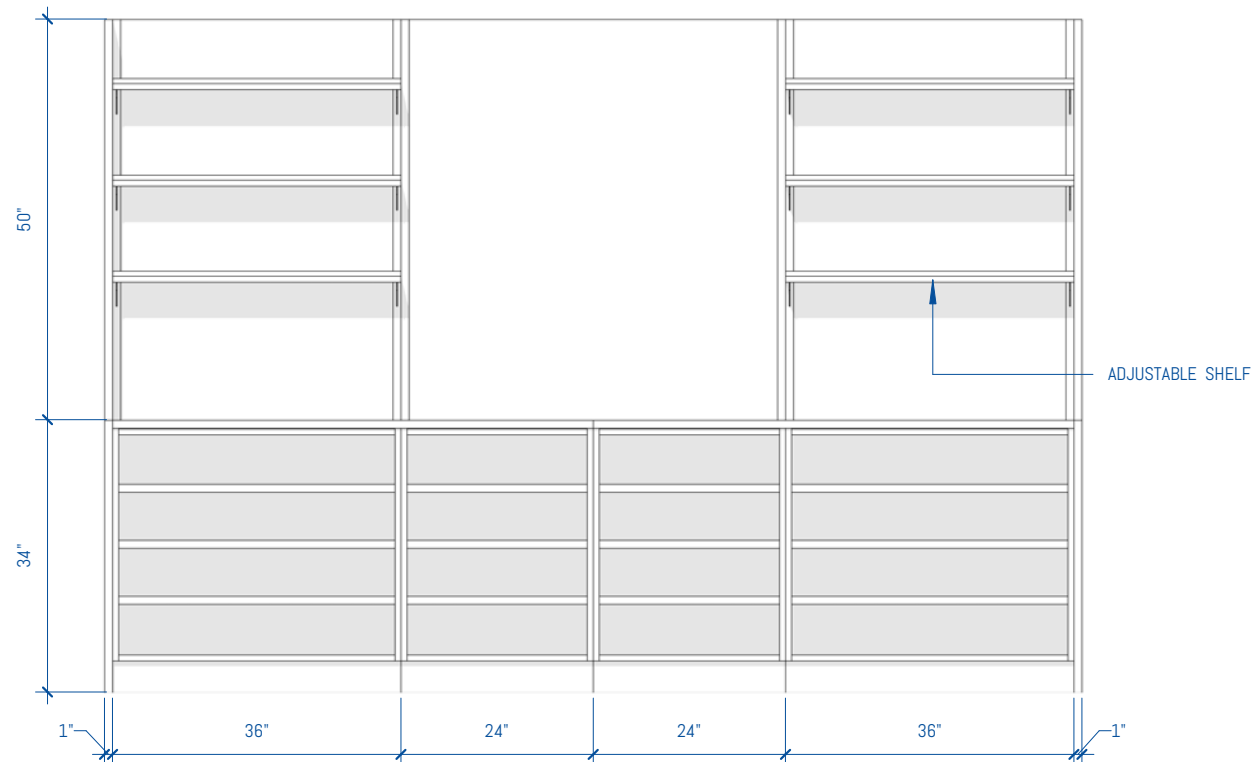




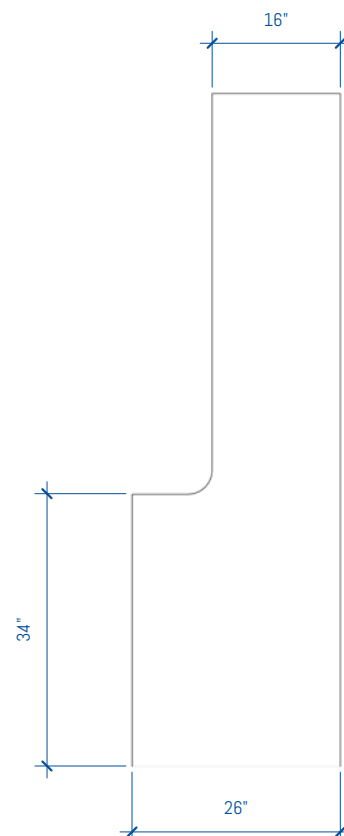
4 PHARMACY ROOM - LAM 10ft - OPTION 3  
1/2" = 1'-0"



3 PHARMACY ROOM - LAM 10ft - OPTION 3



2 PHARMACY ROOM - LAM 10ft - OPTION 3 - FRONT  
1/2" = 1'-0"



1 PHARMACY ROOM - LAM 10ft - OPTION 3 - SIDE  
1/2" = 1'-0"

# GENERAL NOTES

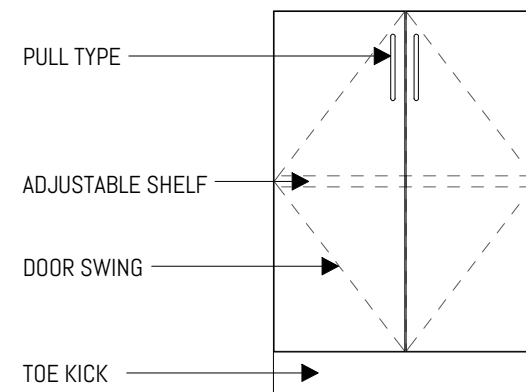
## SUSTAINABILITY

- Particleboard and MDF fabricated from recycled wood waste material
- Cardboard packaging made from recycled materials
- Unusable pallets are recycled
- All aluminum scrap is recycled
- All adhesives used are water-based
- Products meet low VOC standards
- Powder coat paint is used on all metal surfaces
- Greenguard Gold Certified to provide safe, quality, environmentally friendly workspaces.
- FSC and OSHPD certified components are also available

## CONSTRUCTION

- Cabinets are constructed of 3/4" thick industrial grade 40-50lb substrate, double-faced melamine
- All exposed edges are covered with 2mm PVC edge banding
- All panels are connected with hafele mini-fix cam hidden fastener system
- All cabinets are rail mounted for ease of install
- Work surfaces are constructed of 1 1/16" thick high-pressure laminate

# LEGEND



## FOR MORE INFORMATION

<https://bim.southwestsolutions.com>

## MODULAR CASEWORK ROOM SEGMENTS

Copyright 2017 Southwest Solutions Group. This material is proprietary and confidential and the disclosure, reproduction (by photocopy, film, blueprint or otherwise) or incorporation into any information retrieval system without first receiving written approval from Southwest Solutions Group is expressly prohibited by law.

Approved By

Date

Drawn by DHaynal

Salesperson SSG

Scale 1/2" = 1'-0"

RN	DATE	DESCRIPTION
----	------	-------------

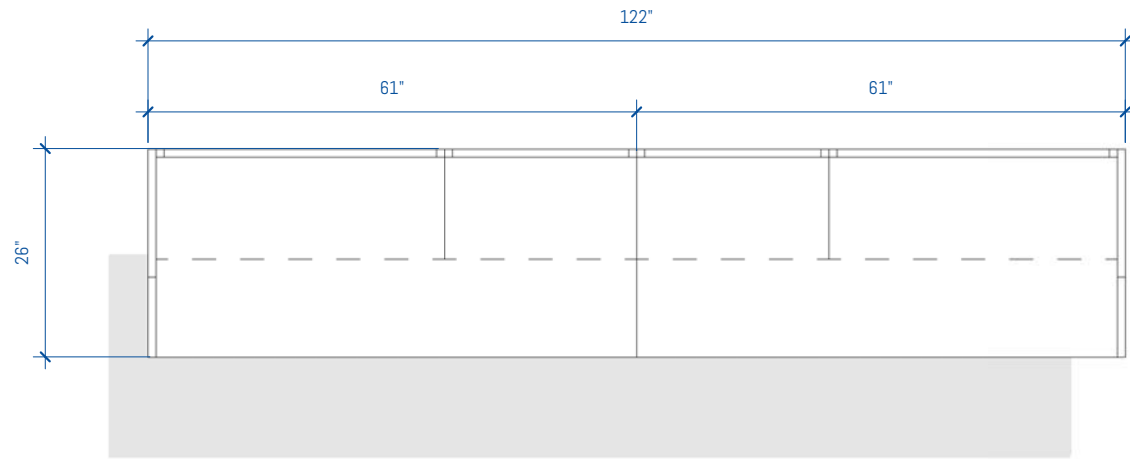
SSG REVISION SCHEDULE

## PHARMACY ROOM - LAM 10ft - OPTION 3

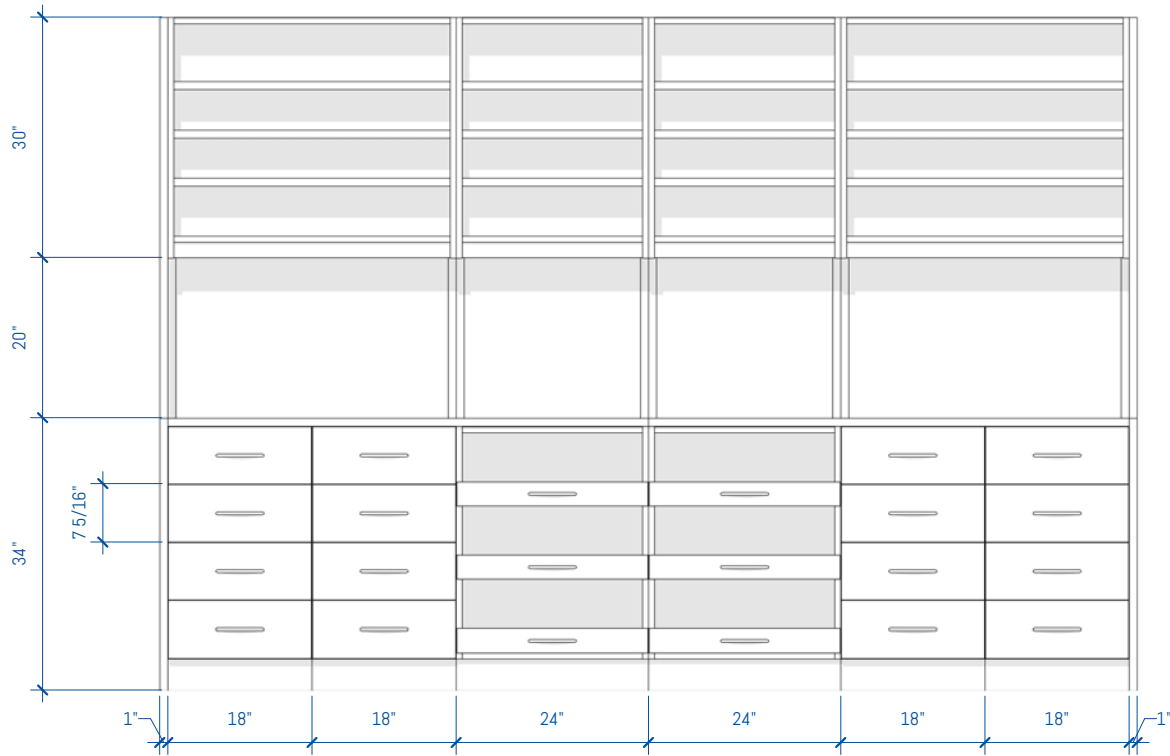
SHEET NUMBER

PR-29 of PR-30

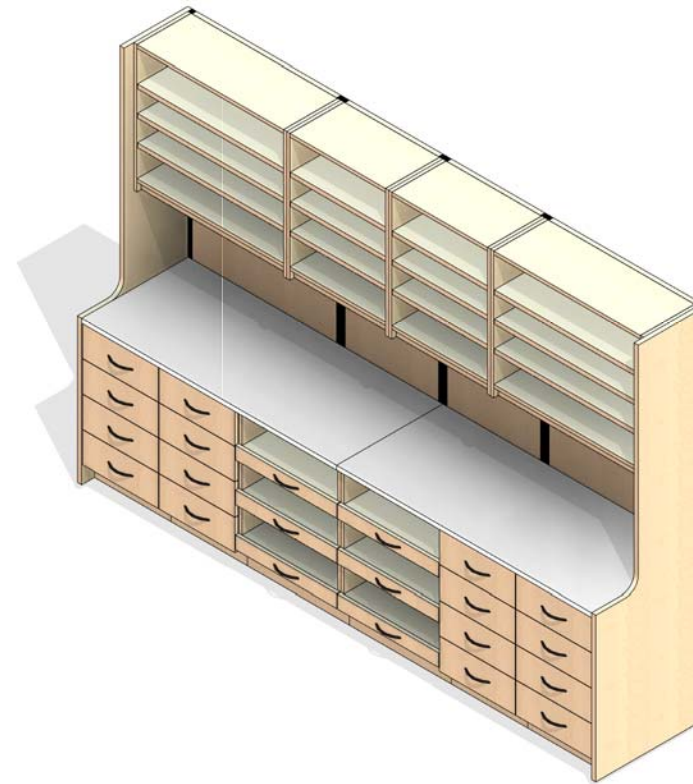




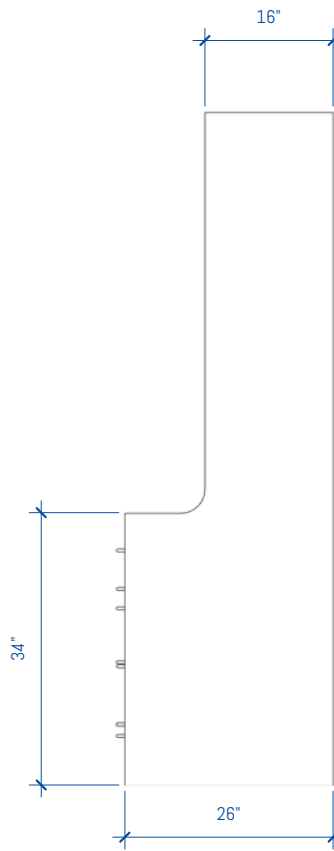
4 PHARMACY ROOM - LAM 10ft - OPTION 4  
1/2" = 1'-0"



2 PHARMACY ROOM - LAM 10ft - OPTION 4 - FRONT  
1/2" = 1'-0"



3 PHARMACY ROOM - LAM 10ft - OPTION 4



1 PHARMACY ROOM - LAM 10ft - OPTION 4 - SIDE  
1/2" = 1'-0"

# GENERAL NOTES

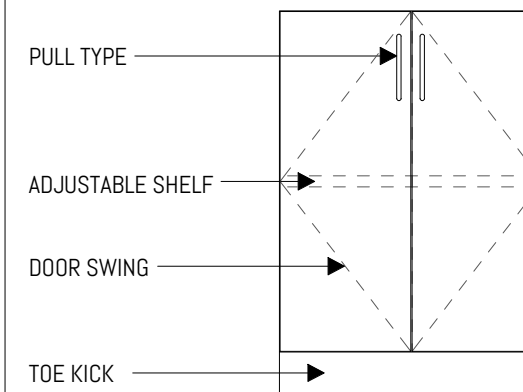
## SUSTAINABILITY

- Particleboard and MDF fabricated from recycled wood waste material
- Cardboard packaging made from recycled materials
- Unusable pallets are recycled
- All aluminum scrap is recycled
- All adhesives used are water-based
- Products meet low VOC standards
- Powder coat paint is used on all metal surfaces
- Greenguard Gold Certified to provide safe, quality, environmentally friendly workspaces.
- FSC and OSHPD certified components are also available

## CONSTRUCTION

- Cabinets are constructed of 3/4" thick industrial grade 40-50lb substrate, double-faced melamine
- All exposed edges are covered with 2mm PVC edge banding
- All panels are connected with hafele mini-fix cam hidden fastener system
- All cabinets are rail mounted for ease of install
- Work surfaces are constructed of 1 1/16" thick high-pressure laminate

# LEGEND



## FOR MORE INFORMATION

<https://bim.southwestsolutions.com>

## MODULAR CASEWORK ROOM SEGMENTS

Copyright 2017 Southwest Solutions Group. This material is proprietary and confidential and the disclosure, reproduction (by photocopy, film, blueprint or otherwise) or incorporation into any information retrieval system without first receiving written approval from Southwest Solutions Group is expressly prohibited by law.

Approved By

Date

Drawn by DHaynal

Salesperson SSG

Scale 1/2" = 1'-0"

RN	DATE	DESCRIPTION
----	------	-------------

SSG REVISION SCHEDULE

PHARMACY ROOM -  
LAM 10ft - OPTION 4

SHEET NUMBER

PR-30 of PR-30