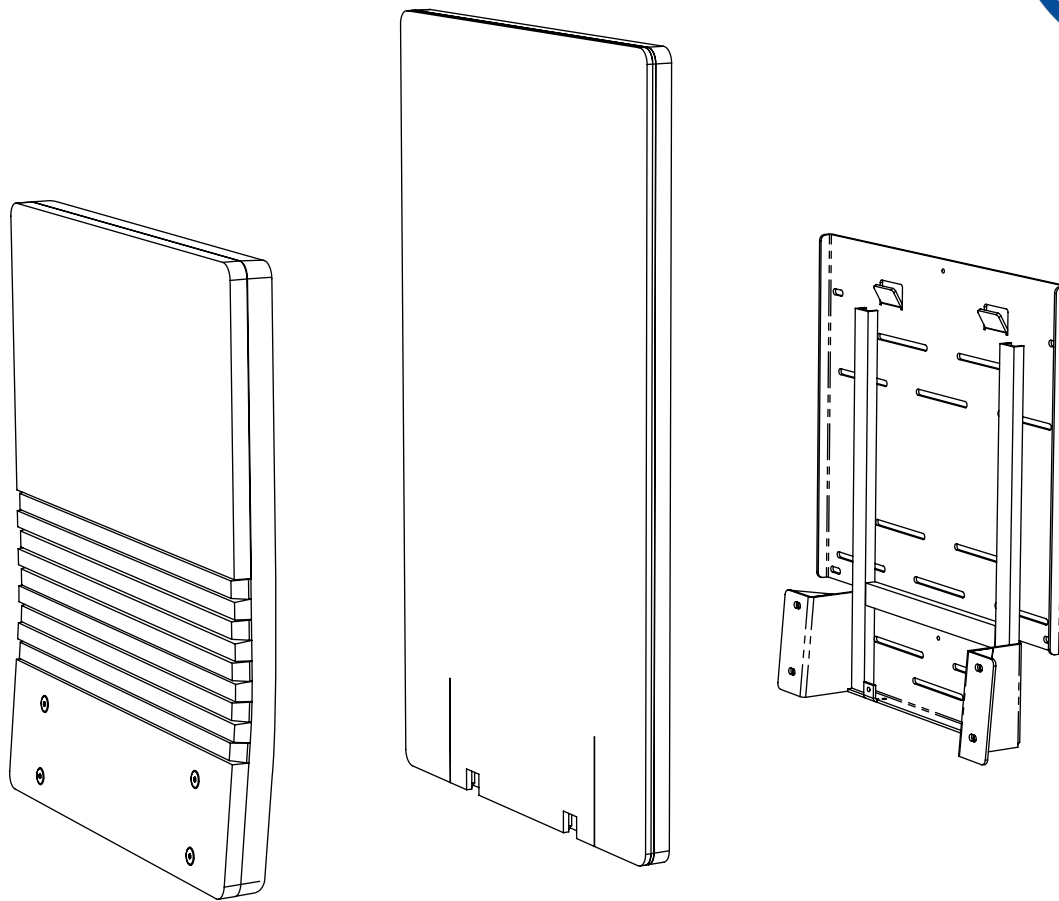
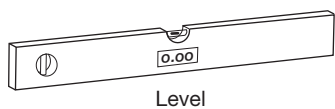


Wall Mounted Seat Commercial Assembly Instructions



TOOLS REQUIRED



Level



CONCRETE



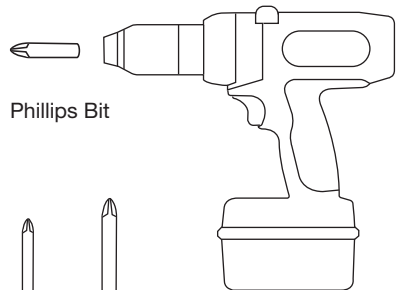
BRICK



DRY WALL

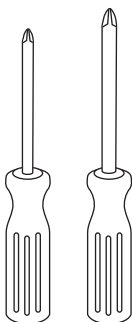


BLOCK



Phillips Bit

Drill

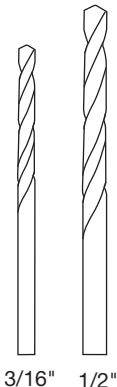


#2

#3



3/16"



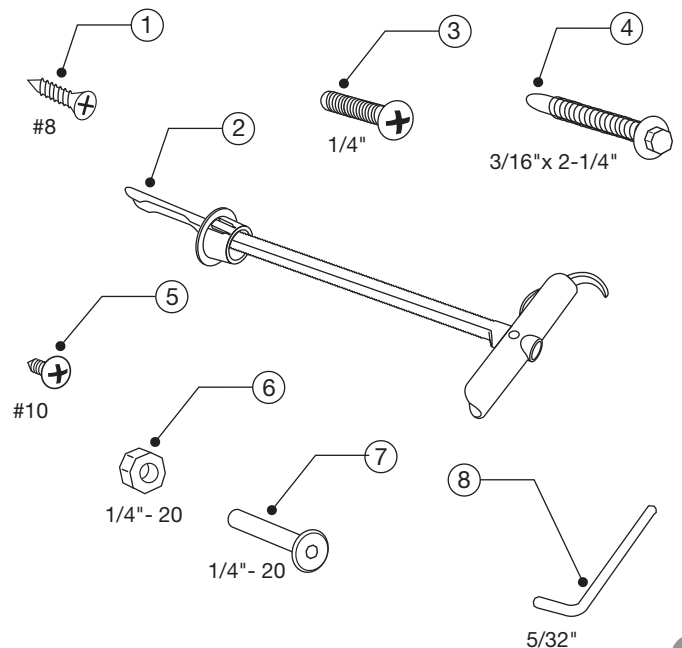
3/16"

1/2"



5/16" Socket

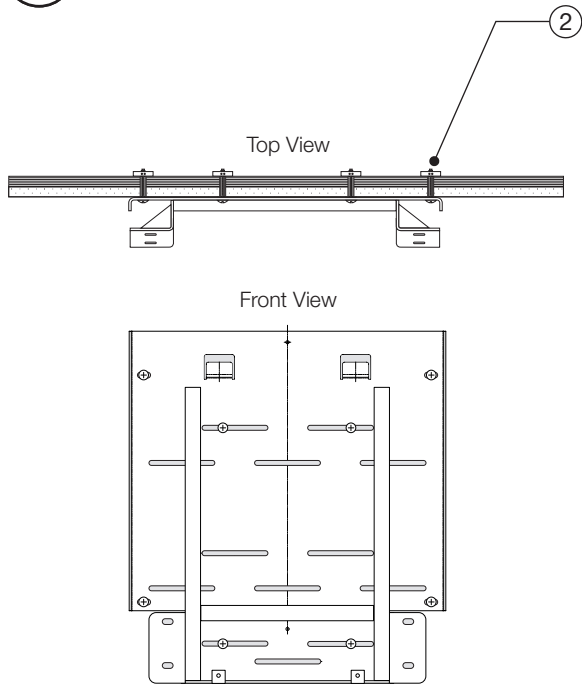
HARDWARE INCLUDED



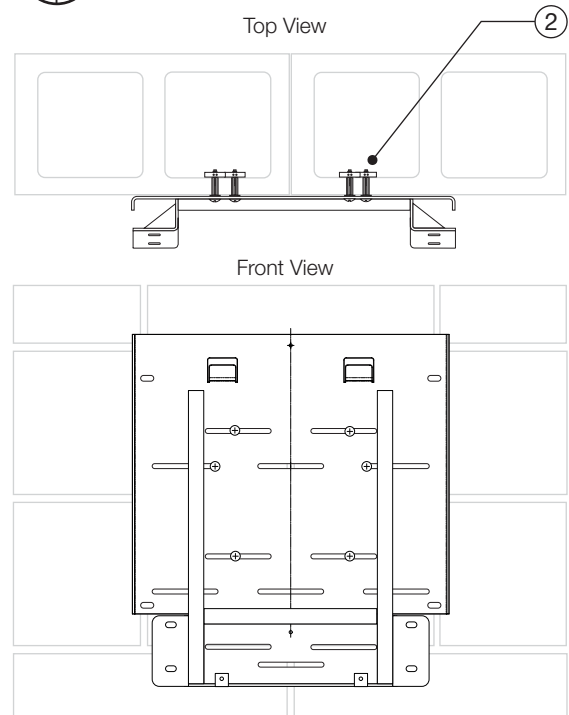
Wall Mounted Seat Commercial Assembly Instructions



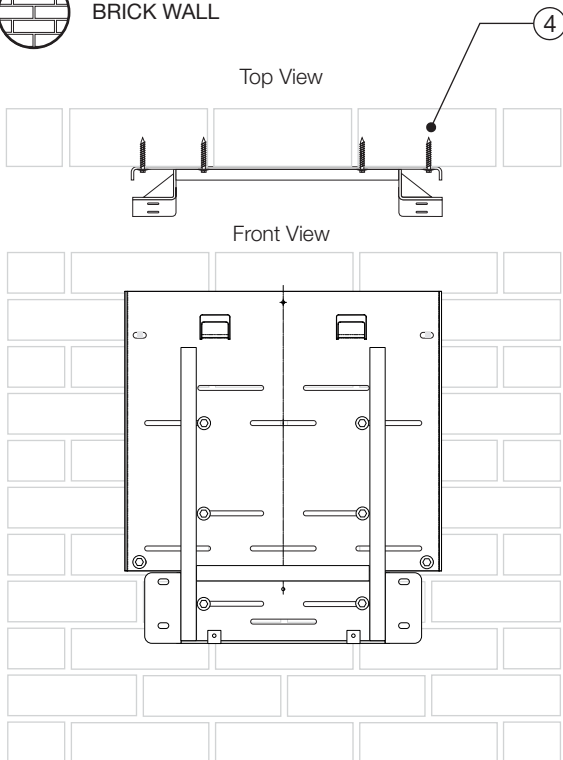
PLYWOOD REINFORCED DRY WALL



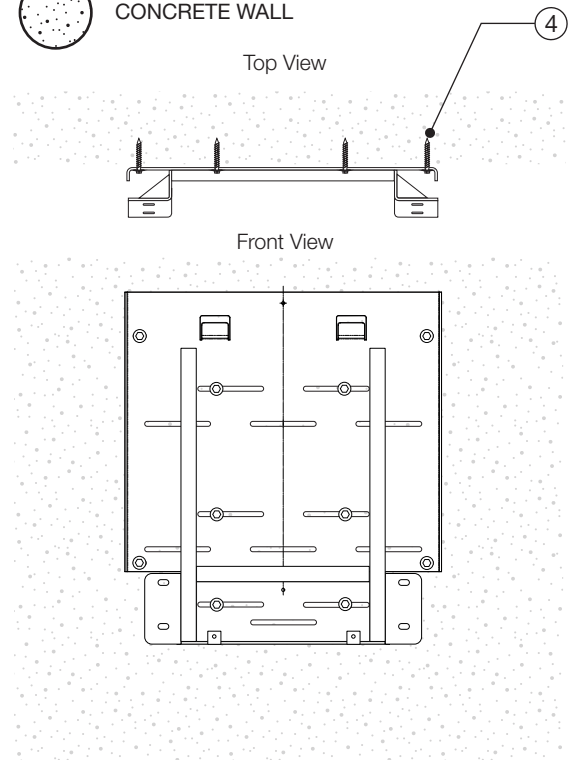
BLOCK WALL



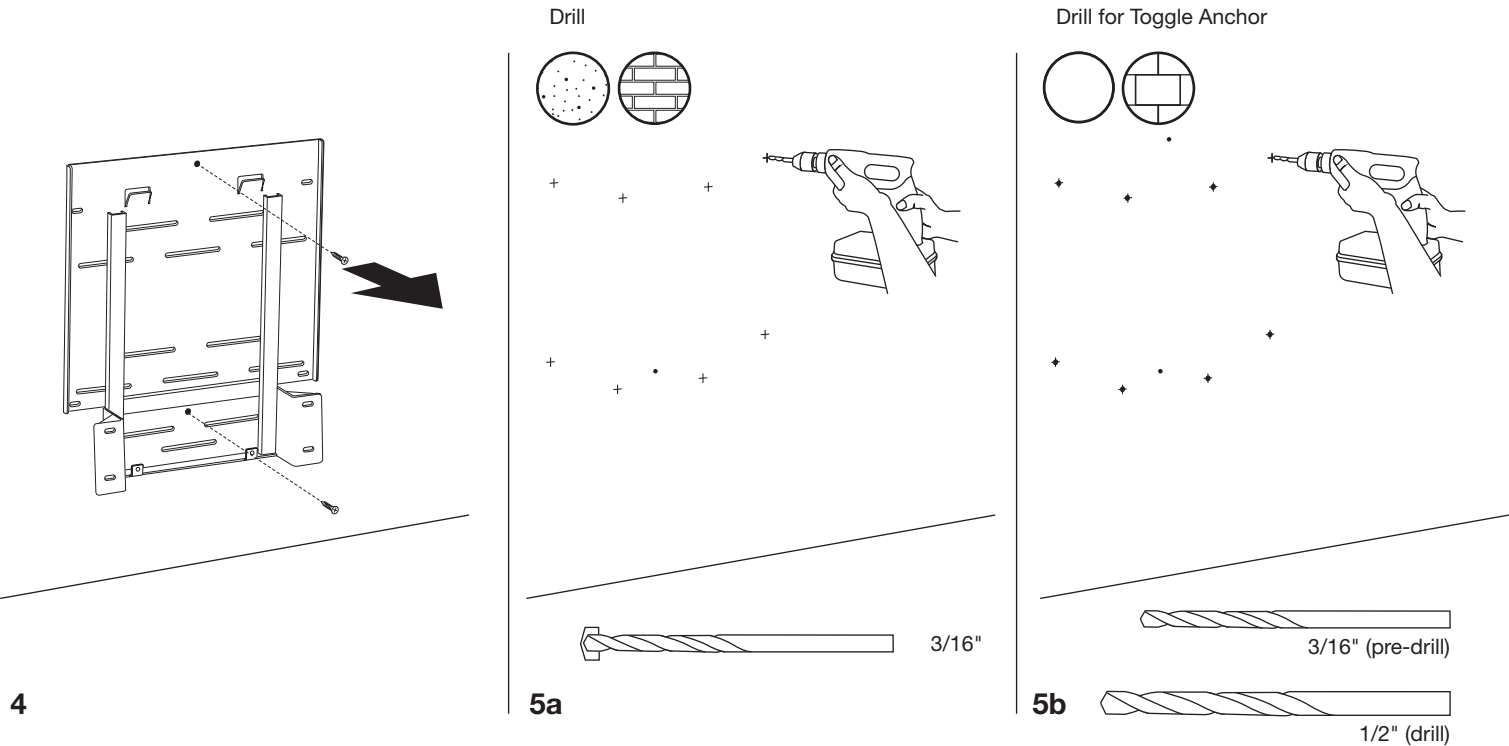
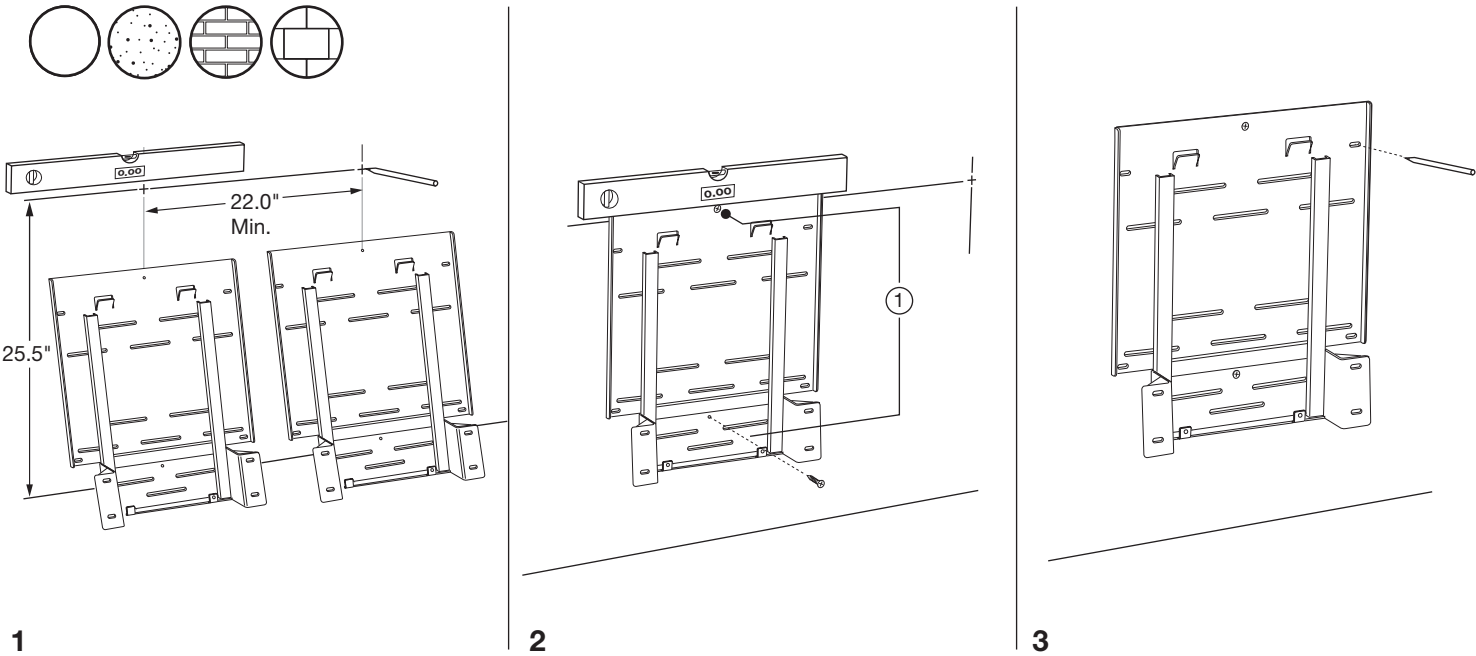
BRICK WALL



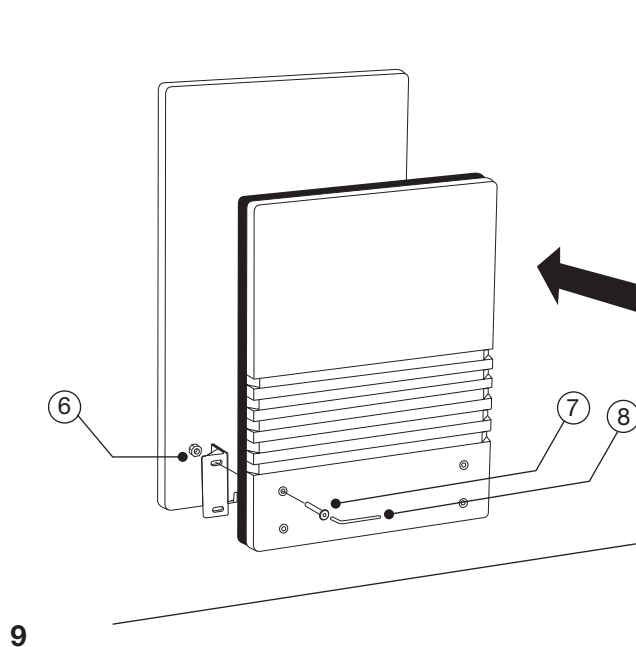
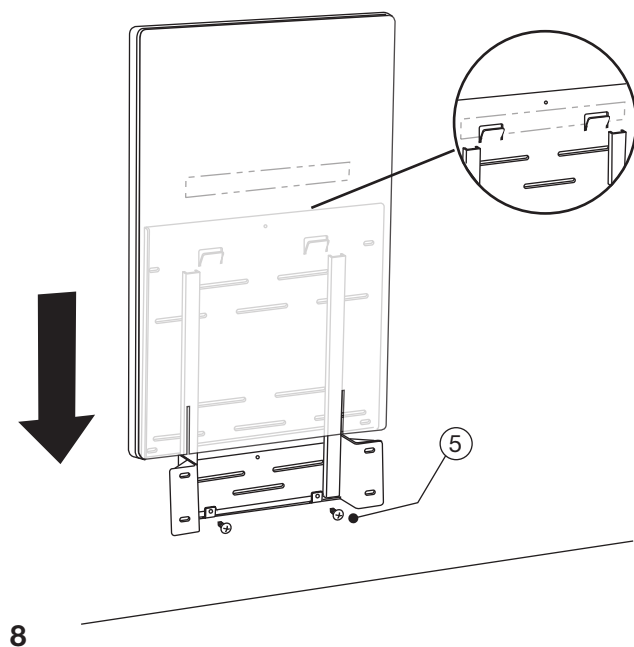
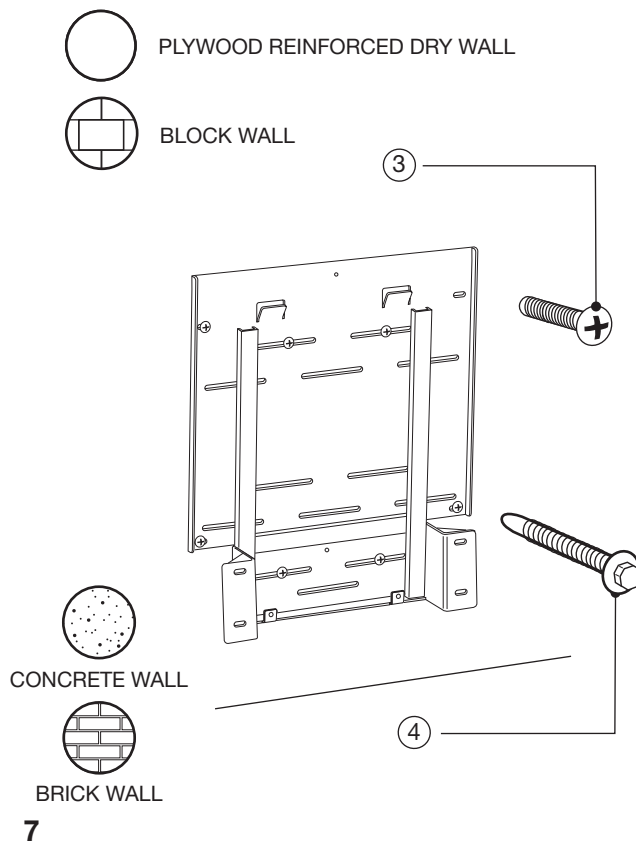
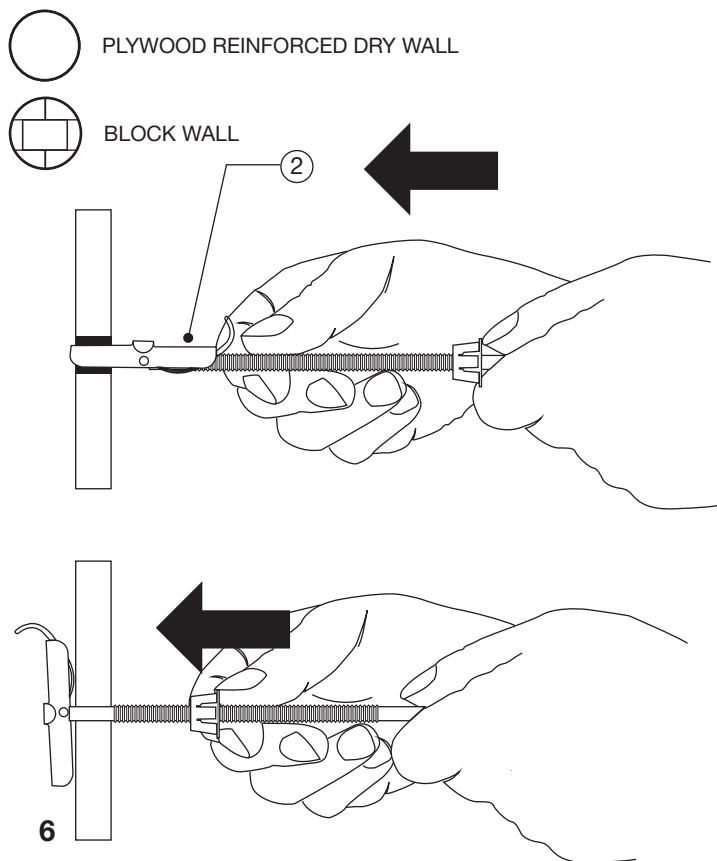
CONCRETE WALL



Wall Mounted Seat Commercial Assembly Instructions

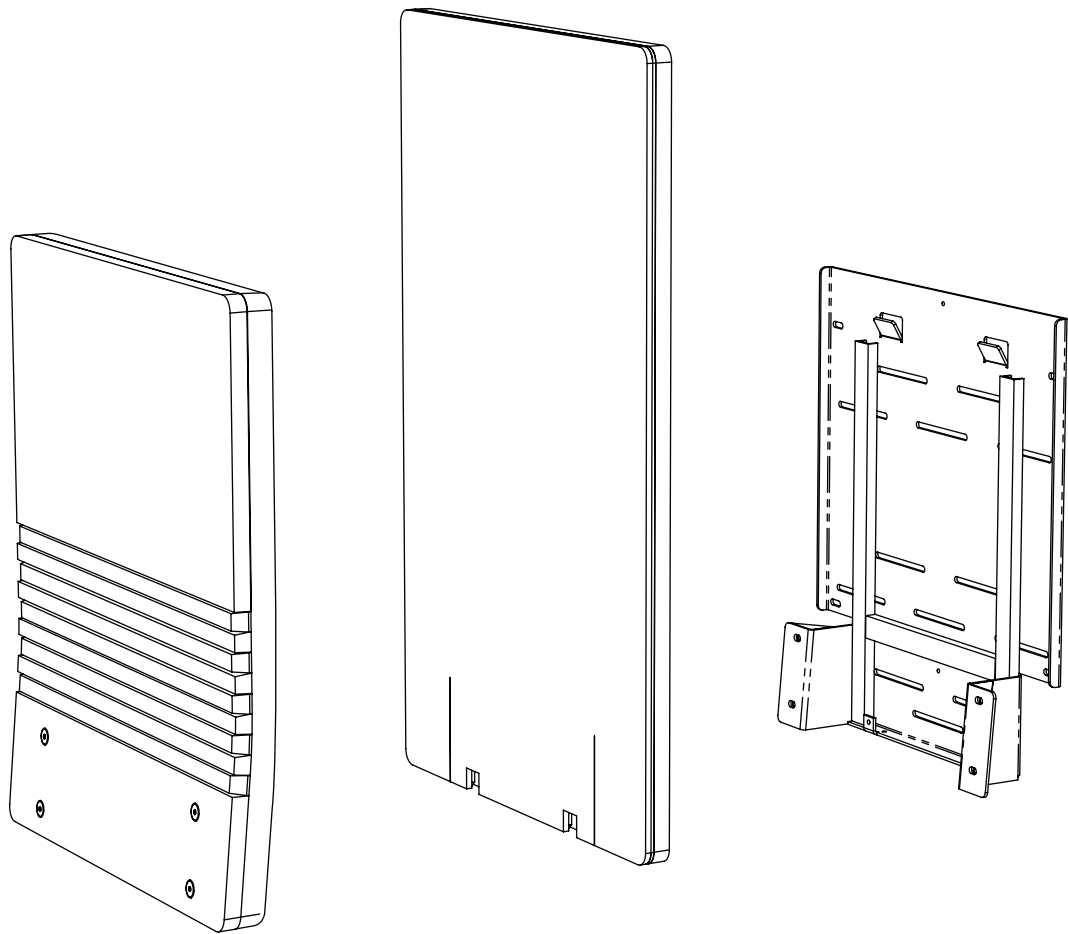


- Recommend wood studs
- Blocking can span over the existing studs or in between existing studs
- If metal studs, make sure the blocking spans the metal studs

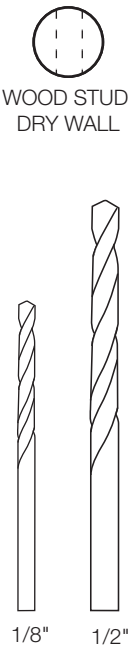
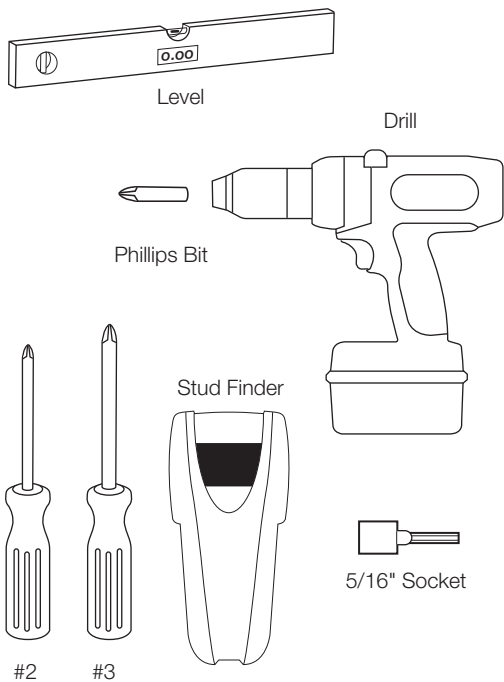


Wall Mounted Seat Commercial Assembly Instructions

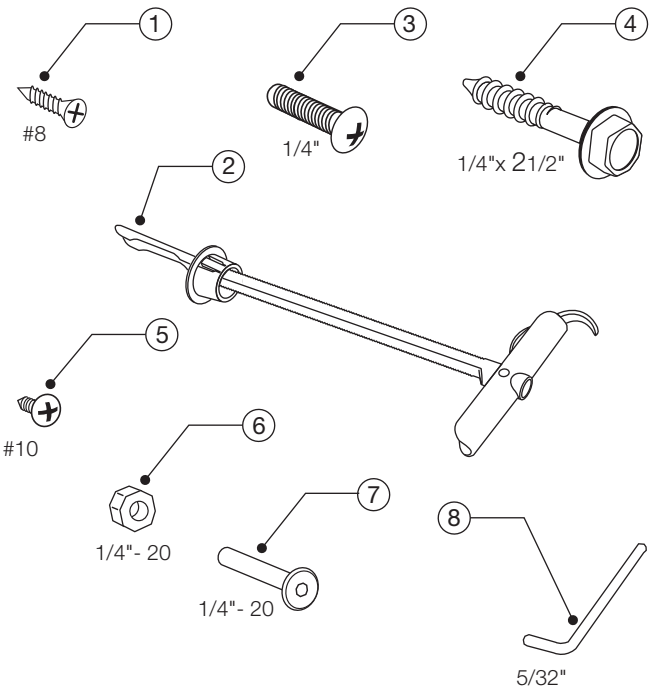
SouthwestSolutions.com | 1-800-803-1083



TOOLS REQUIRED



HARDWARE INCLUDED



Wall Mounted Seat Commercial Assembly Instructions

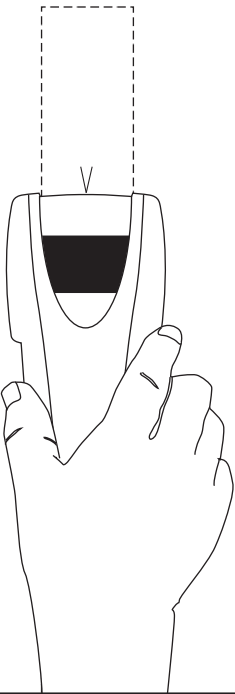
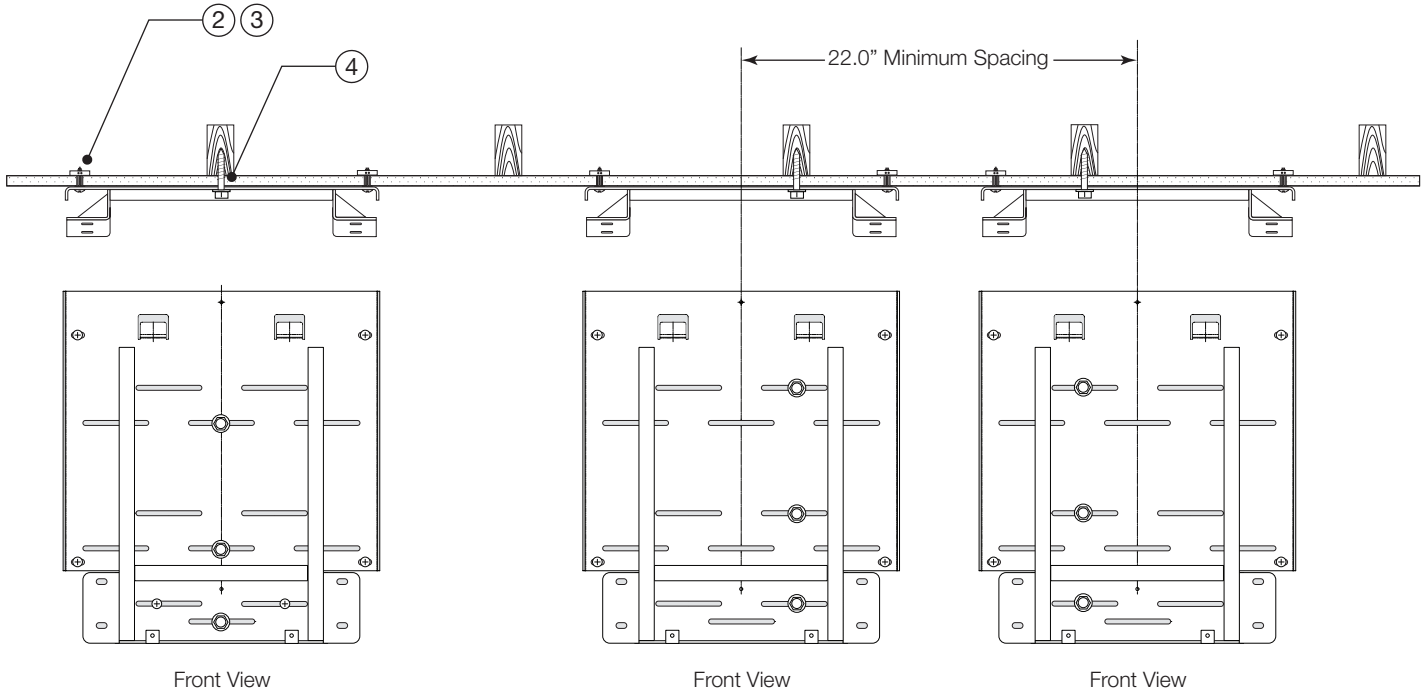


WOOD STUD DRY WALL

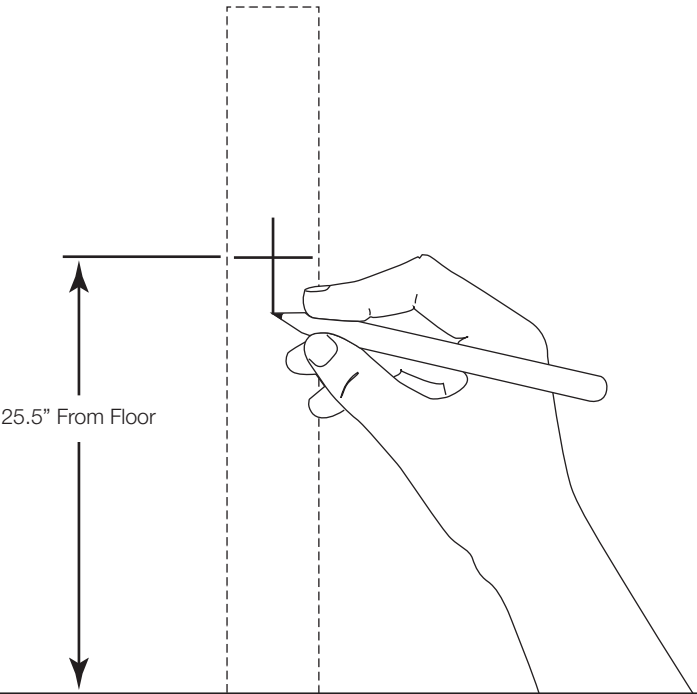
Top View Center Stud

Top View Right Side Stud

Top View Left Side Stud



Locate Stud

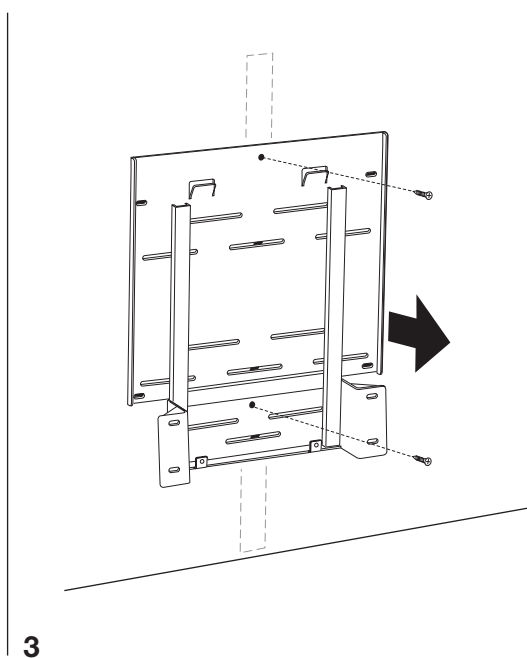
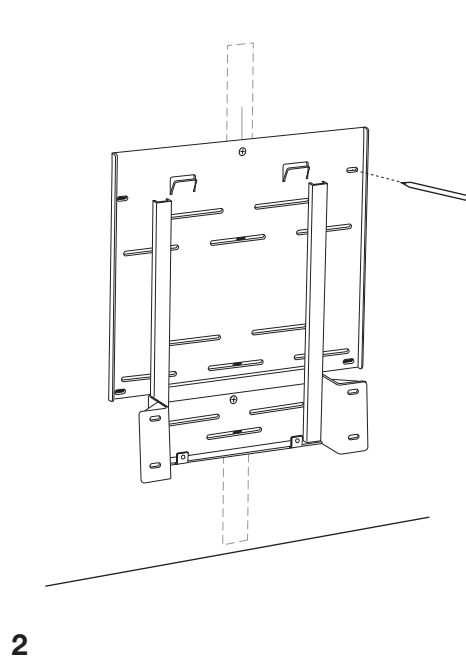
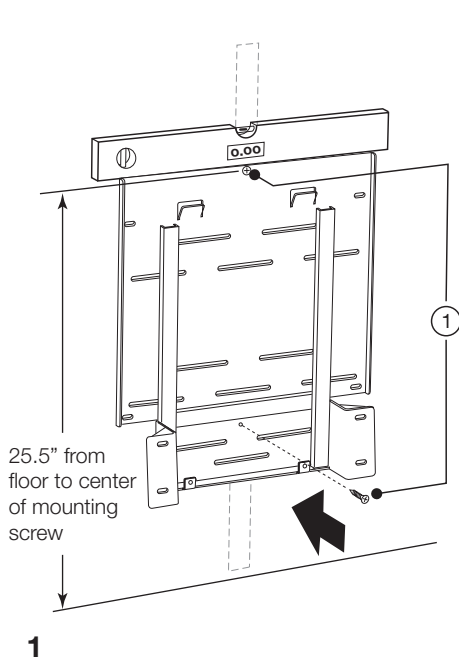


Mark Center Line

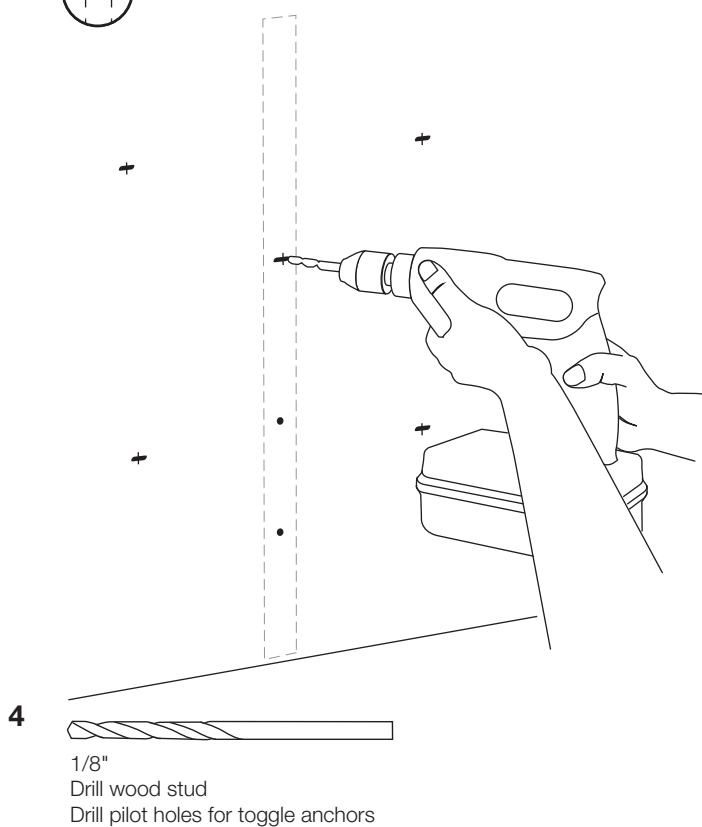
Wall Mounted Seat Residential Assembly Instructions



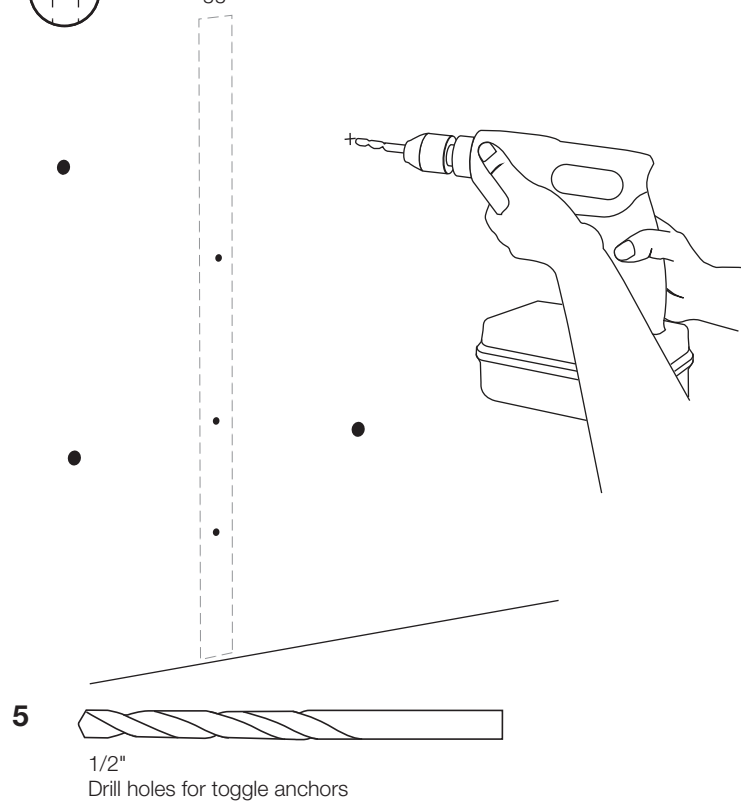
WOOD STUD DRY WALL



Drill



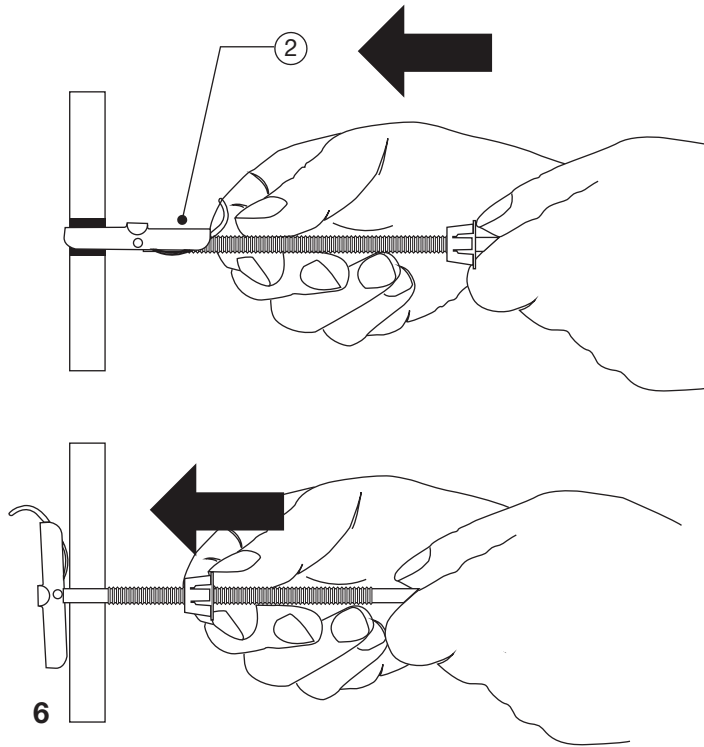
Drill for Toggle Anchor



Wall Mounted Seat Residential Assembly Instructions

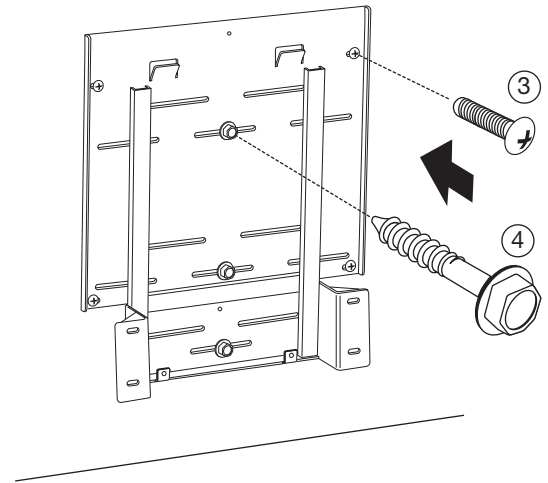


WOOD STUD DRY WALL

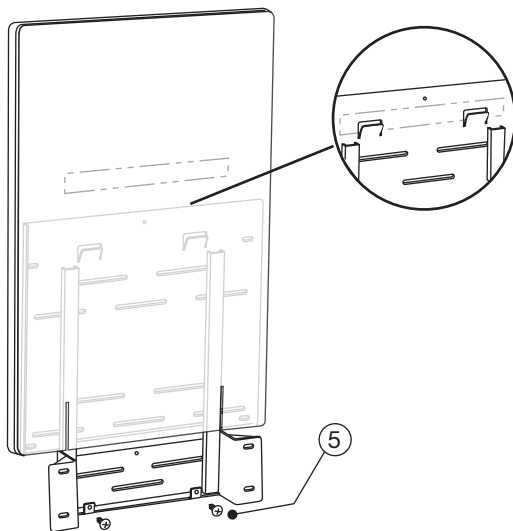


WOOD STUD DRY WALL

7



8



9

