

# Ergohuman Office Chair Specification Sheet

## SMS-04-V14

All of our Ergo chairs were engineered with your total comfort in mind. Aesthetics, form and function are merged seamlessly in a single design, allowing Ergo chairs to be minutely adjusted to achieve unrivaled support. A synchro-tilt mechanism with infinite lock, sliding seat, pneumatic height adjustment, and headrest, are standard on all Ergo models. Add a choice of mesh, leather, or a selection from our Fabrix catalog, and you can build the perfect Ergo chair for you.

### specifications

**Overall Dimensions**

26.5" x 29" x 46-52"  
(W x D x H)

**Seat**

20.5" x 18.5" (W x D)

**Back**

20.5" x 28" (W x H)

**Seat Height**

18.5" (at lowest point)  
22.2" (at highest point)

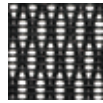
**Weight**

66 lbs

**Cube**

10.9

### standard colors

**black mesh  
W09-1****black leather****leather  
seat/mesh  
high-back**

LEM4ERG



### features

**Tilt Tension Control**

Recline rate adapts to weight of user.

**Tilt Lock**

Locks out tilt function.

**Back Angle Adjustment**

Sets back angle for personalized comfort in reclined position.

**Synchro-Tilt**

Back reclines in a preset ratio to seat.

**Seat Height Adjustment**

Sets seat height to desired position relative to floor.

**Waterfall Seat**

Front of cushion slopes to reduce pressure on the back of the knees.

**Back Height Adjustment**

Raise or lower to support the lumbar (lower back) region.

**Seat Depth Adjustment**

Adjusts seat depth relative to back.

**Arm Height Adjustment**

Adjusts arm up or down for proper ergonomic positioning while seated.

**Swivel Arm**

Arm pads angle in or out for proper ergonomic positioning.

**Arm Depth Adjustment**

Arm pads slide forward or backward for proper ergonomic positioning.

**Adjustable Single Lever Headrest on High-Back Model**

Contact us or visit web for available Fabrix colors and options.



# Ergohuman Office Chair Specification Sheet

## SMS-04-V14

All of our Ergo chairs were engineered with your total comfort in mind. Aesthetics, form and function are merged seamlessly in a single design, allowing Ergo chairs to be minutely adjusted to achieve unrivaled support. A synchro-tilt mechanism with infinite lock, sliding seat, pneumatic height adjustment, and headrest, are standard on all Ergo models. Add a choice of mesh, leather, or a selection from our Fabrix catalog, and you can build the perfect Ergo chair for you.

### specifications

**Overall Dimensions**

26.5" x 29" x 46-52"  
(W x D x H)

**Seat**

20.5" x 18.5" (W x D)

**Back**

20.5" x 28" (W x H)

**Seat Height**

19.3" (at lowest point)  
24" (at highest point)

**Weight**

66 lbs

**Cube**

10.9

### standard colors

**black leather**

leather  
high-back

LE9ERG



### features

**Tilt Tension Control**

Recline rate adapts to weight of user.

**Tilt Lock**

Locks out tilt function.

**Back Angle Adjustment**

Sets back angle for personalized comfort in reclined position.

**Synchro-Tilt**

Back reclines in a preset ratio to seat.

**Seat Height Adjustment**

Sets seat height to desired position relative to floor.

**Waterfall Seat**

Front of cushion slopes to reduce pressure on the back of the knees.

**Back Height Adjustment**

Raise or lower to support the lumbar (lower back) region.

**Seat Depth Adjustment**

Adjusts seat depth relative to back.

**Arm Height Adjustment**

Adjusts arm up or down for proper ergonomic positioning while seated.

**Swivel Arm**

Arm pads angle in or out for proper ergonomic positioning.

**Arm Depth Adjustment**

Arm pads slide forward or backward for proper ergonomic positioning.

**Adjustable Headrest on High-Back Model**

# Ergohuman Office Chair Specification Sheet

## SMS-04-V14





# Ergohuman Office Chair Specification Sheet

## SMS-04-V14



## ERGOHUMAN GEN2

The GEN2 is engineered with your total comfort in mind. Aesthetics, form and function are merged seamlessly in a single design, and allows the chairs to be minutely adjusted to achieve unrivaled ergonomic fine tuning.





# Ergohuman Office Chair Specification Sheet

## SMS-04-V14





# Ergohuman Office Chair Specification Sheet

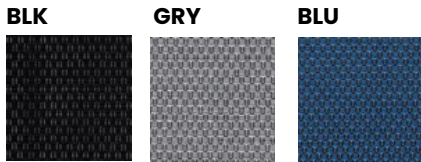
## SMS-04-V14



# Ergohuman Office Chair Specification Sheet

## SMS-04-V14

- ✓ SYNCHRO-TILT WITH SEAT SLIDER
- ✓ FORWARD TILT
- ✓ TILT-LOCK
- ✓ TILT-TENSION
- ✓ SINGLE LEVER CONTROL FOR HEIGHT, SEAT DEPTH AND TILT
- ✓ LOCK LUMBAR TENSION CONTROL
- ✓ HEIGHT ADJUSTABLE RATCHET
- ✓ BACK 6-WAY DYNAMIC LUMBAR PANEL FPC MATERIAL IS LIGHTER, MORE DURABLE WITH HIGHER QUALITY-SMOOTHER SURFACE.



**Back:** 20.67" x 27.17-29.92" (W x H)

**Cube:** 10.8

**Seat:** 20.67" x 19.69" (W x D)

**Weight:** 66 lbs

**Seat Height:** 17.83" (at lowest point) 21.38" (at highest point)

**Overall Dimensions:**

26.18" x 26.57" x 44.69-51.18" (W x D x H)

### CERTIFICATIONS

Meets/Exceeds ANSI/BIFMA

GREENGUARD Gold (97%

Recyclable)



### FRAME

FPC (non-petroleum material) Stronger, smoother surface than nylon.

### GLASS FIBER MECHANISM

for smoother adjustment and precision

Matrex T168 mesh with 12 zone mesh support

### Material

4D

(pivoting, depth, width and height)

large soft padded arms

### ARMS





# Ergohuman Office Chair Specification Sheet

## SMS-04-V14

