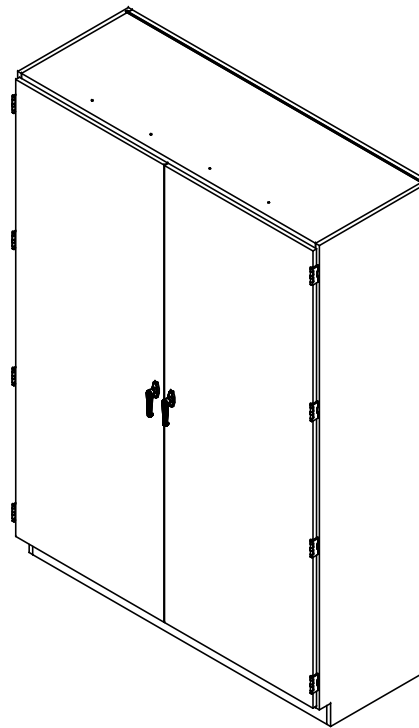


Tall Maple Storage Cabinet with Locking Doors

SMS-01-V102-GSC-22

GSC SERIES
ASSEMBLY INSTRUCTIONS



NOTE:

1. MODEL VIEWS MAY NOT REPRESENT EXACT MODEL PURCHASED

TOOLS REQUIRED

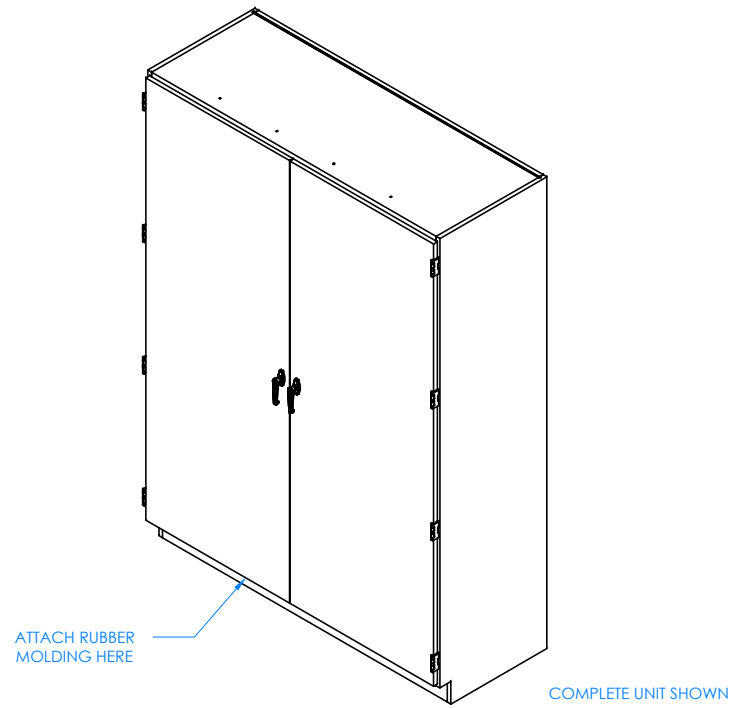
CONTACT CEMENT

SCREW DRIVER

ASSEMBLY COMPONENTS

ITEMS INCLUDED	PART #	PART DESCRIPTION	QTY
RUBBER BASE MOLDING	100283	RUBBER BASE MOLDING (SOLD BY FOOT)	VARIES
STAINLESS STEEL CORNERS	100057	CORNERS-STAINLESS STEEL,BASE	2
SCREWS - BASE	100064	SCREW,#6X ½ PTH SMS SS SCREW	8



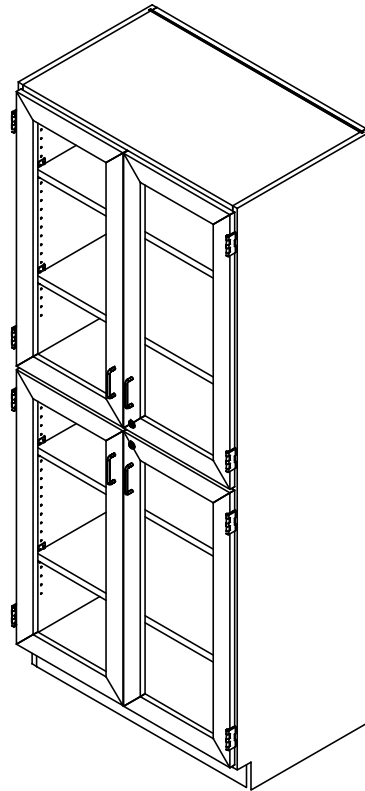


STEP 1:

POSITION CABINET IN YOUR DESIRED LOCATION. LEVEL THE CABINET AND ANCHOR TO WALL. NOTE: CABINETS MUST BE LEVELED OR DOORS AND DRAWERS MAY NOT OPEN OR CLOSE CORRECTLY. ATTACH RUBBER MOLDING TO BASE OF CABINET USING CONTACT CEMENT. AFTER MOLDING IS IN PLACE, SCREW STAINLESS STEEL CORNER BRACKETS ON EACH CORNER OVER THE BASE MOLDING WITH THE SCREWS PROVIDED.

Tall Maple Storage Cabinet with Locking Doors SMS-01-V102-353

S- SERIES (84"H), TC- SERIES, L84- SERIES, TETC- SERIES, TTC- SERIES, WSC- SERIES, DBC- SERIES, PSC- SERIES, DTC- SERIES, GSC- SERIES, & OS- SERIES
ASSEMBLY INSTRUCTIONS



NOTE:

1. MODEL VIEWS MAY NOT REPRESENT EXACT MODEL PURCHASED



TOOLS REQUIRED

CONTACT CEMENT

SCREW DRIVER

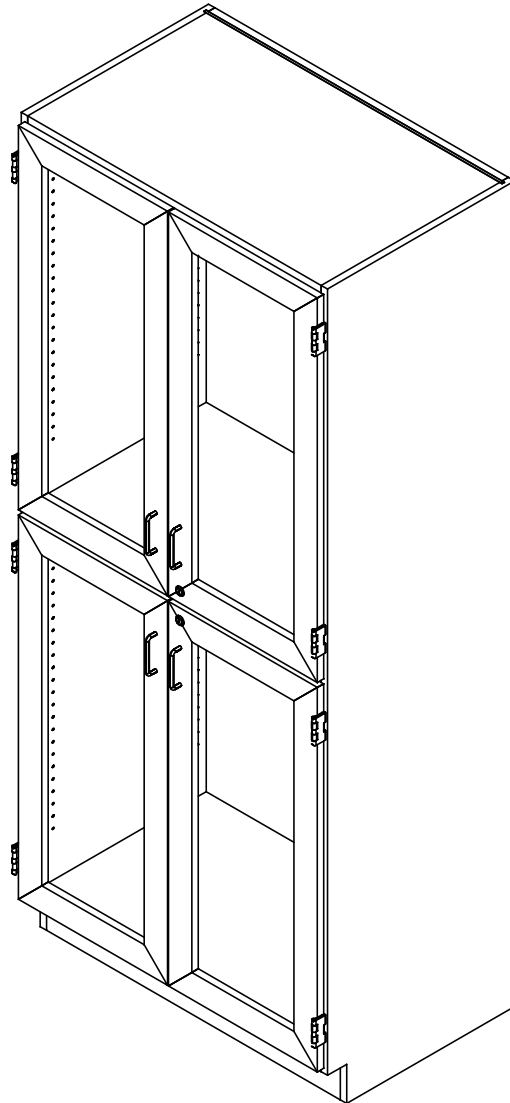
ASSEMBLY COMPONENTS

ITEMS INCLUDED	PART #	PART DESCRIPTION	QTY
RUBBER BASE MOLDING	100283	RUBBER BASE MOLDING (SOLD BY FOOT)	VARIES
STAINLESS STEEL CORNERS	100057	CORNERS-STAINLESS STEEL,BASE	2
SCREWS - BASE	100064	SCREW,#6X ½ PTH SMS SS SCREW	8
SHELF CLIPS	100027	SHELF CLIPS,PLASTIC,5MM PIN	VARIES
PLASTIC BINS - PSC-SERIES	15-0038	HANG BINS,7.37X4.125X3	80
TOTE TRAYS - 350-XXYY, 351-XXYY, TTC-SERIES, DTC-SERIES, & GSC-SERIES	100135	TOTE TRAYS, T-188	VARIES
TOTE TRAYS - L84-SERIES	15-0084	TOTE TRAY - 9X19X4-3/8H	6
TOTE TRAYS - L84-SERIES	15-0081	TOTE TRAY - 13.5X19X4.25H	8
MICROSCOPE DIVIDERS - 370-XXYY, 372-XXYY, & 373-XXYY SERIES	100995	MICROSCOPE DIVIDER,ZINC	VARIES

NOTE:

- COMPONENTS VARY WITH STYLE OF TALL STORAGE UNIT PURCHASED.



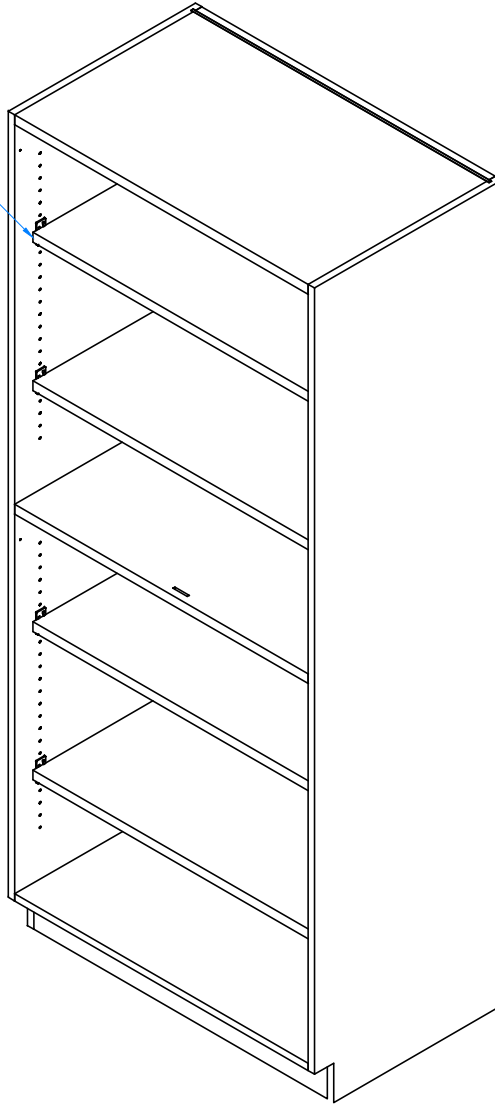


STEP 1:

- POSITION CABINET IN YOUR DESIRED LOCATION.
- LEVEL CABINET.
- ANCHOR TO WALL AS CABINET WILL BE TOP HEAVY.

****NOTE****
CABINET MUST BE LEVELED OR
DOORS AND DRAWERS MAY NOT
OPEN OR CLOSE CORRECTLY

ADJUSTABLE
SHELVES - TYPICAL

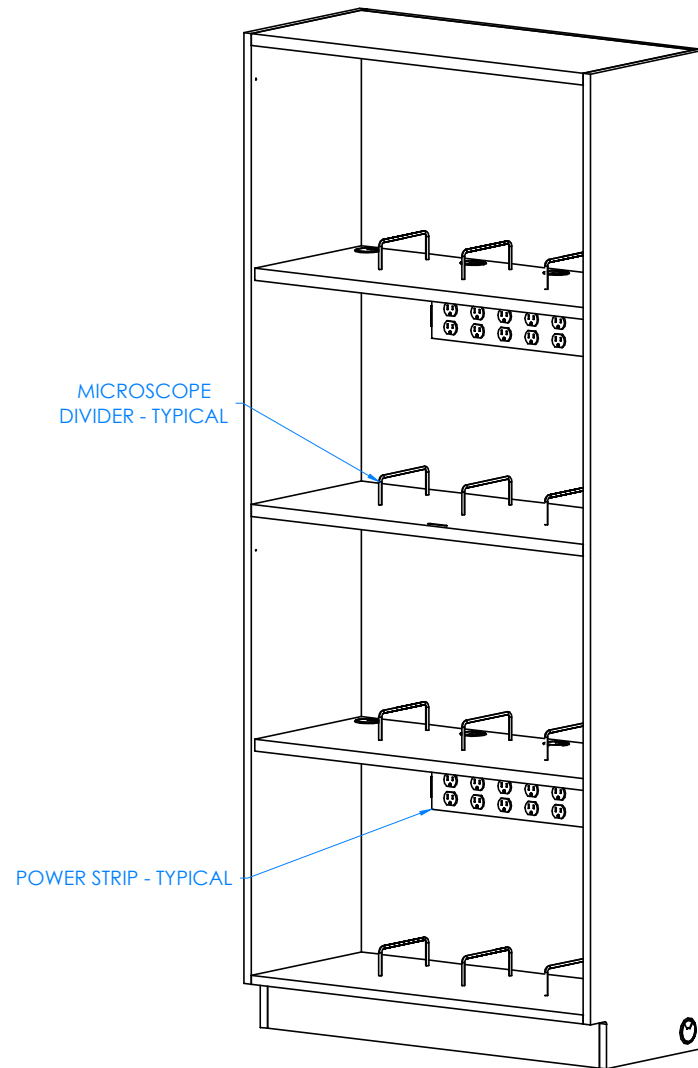


STEP 2:

- INSERT SHELF CLIPS IN DESIRED LOCATION.
- PLACE SHELVES ON CLIPS, MAKING SURE THEY ARE LEVEL.

DOORS AND HARDWARE REMOVED
TO SHOW CLARITY



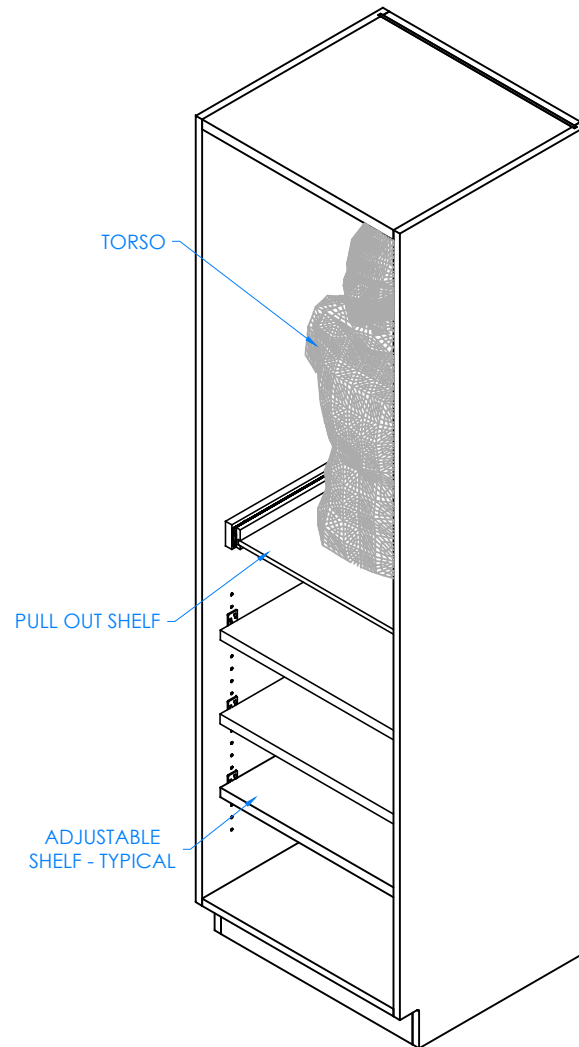


STEP 3:

- IF YOU DO NOT HAVE A MICROSCOPE CABINET (370-XXYY, 372-XXYY, OR 373-XXYY), SKIP TO STEP 5.
- ATTACH MICROSCOPE DIVIDERS TO SHELVES.
- PLUG IN POWER STRIP TO OUTLET.

MICROSCOPE CABINET SHOWN
DOORS AND HARDWARE REMOVED TO SHOW CLARITY

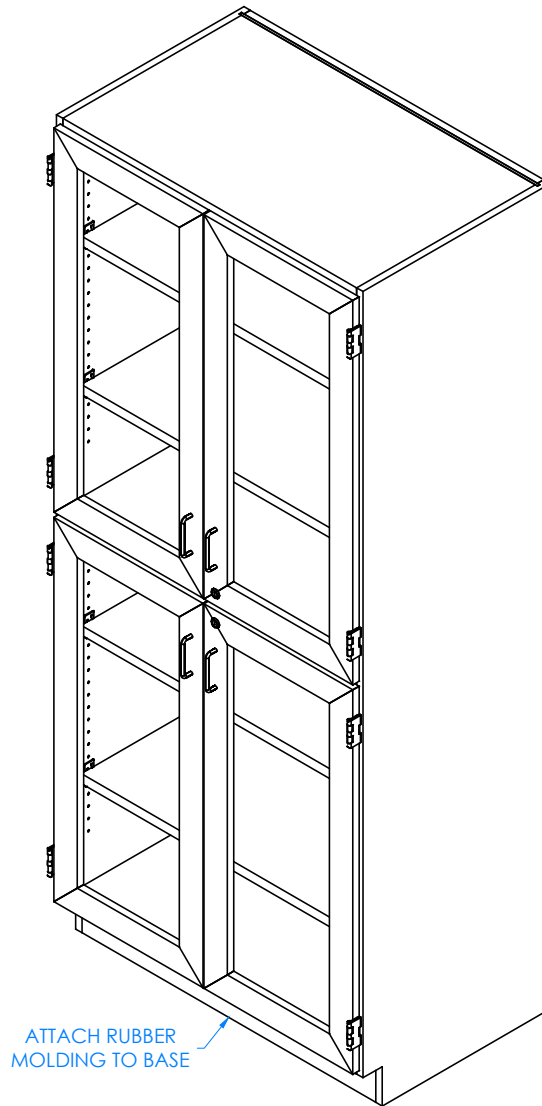




STEP 4:

- IF YOU DO NOT HAVE A TORSO CABINET (374-2422), SKIP TO STEP 5.
- PLACE TORSO ONTO PULL OUT SHELF.
- MAKE SURE TORSO IS STABLE!

TORSO CABINET SHOWN
DOORS AND HARDWARE REMOVED TO SHOW CLARITY



COMPLETE UNIT SHOWN

STEP 5:

- ATTACH RUBBER MOLDING TO BASE OF CABINET USING CONTACT CEMENT.
- SCREW STAINLESS STEEL CORNER BRACKETS ON EACH CORNER OVER BASE MOLDING WITH HARDWARE PROVIDED.
- IF YOUR UNIT HAS TOTE TRAYS OR PLASTIC BINS, PLACE THEM IN DESIRED LOCATION.

