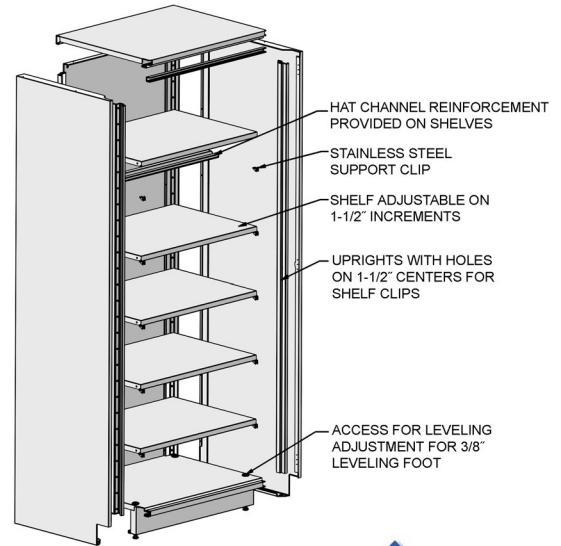


# Tall Cabinets



## Framed Glass Swinging Tall Cases

Download  
Spec Sheet  
EG03.42

### with Flat Top

depth		width		weight		description	model #
in	mm	in	mm	lbs.	kg		
18"	457	24"	610	443	200.9	left swing door	SSC-TCBGL-1824
18"	457	24"	610	443	200.9	right swing door	SSC-TCBGR-1824
18"	457	30"	762	481	218.1	double doors	SSC-TCBG-1830
18"	457	36"	914	481	218.1	double doors	SSC-TCBG-1836
18"	457	48"	1219	518	234.9	double doors	SSC-TCBG-1848
24"	610	24"	610	473	214.5	left swing door	SSC-TCBGL-2424
24"	610	24"	610	473	214.5	right swing door	SSC-TCBGR-2424
24"	610	30"	762	548	248.5	double doors	SSC-TCBG-2430
24"	610	36"	914	593	268.9	double doors	SSC-TCBG-2436
24"	610	48"	1219	623	282.5	double doors	SSC-TCBG-2448

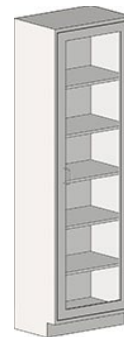
### with Sloped Top

depth		width		weight		description	model #
in	mm	in	mm	lbs.	kg		
18"	457	24"	610	463	210.0	left swing door	SSC-TCBGLST-1824
18"	457	24"	610	463	210.0	right swing door	SSC-TCBGRST-1824
18"	457	30"	762	501	227.2	double doors	SSC-TCBGST-1830
18"	457	36"	914	531	240.8	double doors	SSC-TCBGST-1836
18"	457	48"	1219	538	244.0	double doors	SSC-TCBGST-1848
24"	610	24"	610	493	223.6	left swing door	SSC-TCBGLST-2424
24"	610	24"	610	493	223.6	right swing door	SSC-TCBGRST-2424
24"	610	30"	762	568	257.6	double doors	SSC-TCBGST-2430
24"	610	36"	914	613	278.0	double doors	SSC-TCBGST-2436
24"	610	48"	1219	643	291.6	double doors	SSC-TCBGST-2448

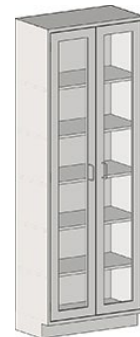
- Full height hinged door(s) with framed glass.
- Five adjustable shelves.
- 84" (2134mm) height.
- 18" (457mm) or 24" (610mm) depth.



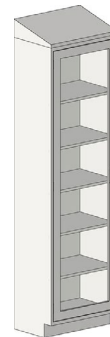
SSC-TCBGL-1818



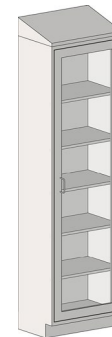
SSC-TCBGR-1824



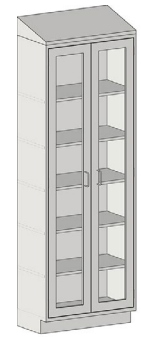
SSC-TCBG-1830



SSC-TCBGLST-1824



SSC-TCBGRST-1824



SSC-TCBGST-1830