

L COMPACT STATIONARY CABINET



L COMPACT STATIONARY CABINET

The L Compact Stationary Cabinet has been developed to better meet our customers' needs in terms of dimensions offered, drawer configurations and accessories that fit in a compact cabinet.

The L Compact Stationary Cabinet is 18" wide and comes in two depths (21" and 27") and five heights (24", 28", 30", 34" and 40"). A 2" or 4" painted steel or stainless steel base can also be added to raise the cabinet height slightly or to create more space for feet. With the security system, you can lock all the drawers with a single action.

There are 6 different drawer heights available from 3" to 12", and the drawers can be accessorized with partitions, dividers and plastic bins for optimal organization of your parts. Each drawer has a 100lb. load capacity and an ergonomic, easy-grip handle.

The L Compact Stationary Cabinet is an excellent alternative to the R heavy-duty line. Learn more in the following pages.



L3ABD-2418L3C

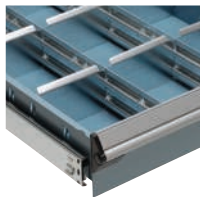
L3ABD-3442L3C

THE ROUSSEAU DIFFERENCE



100lb. load capacity per drawer.

100% extension for both drawer depths.



Partitions and dividers are clipped in.



Wide variety of drawer accessories available: full-depth partitions, dividers, plastic bins, hanging file holders, protective foam, etc.



Central locking on the cabinet housing.



Six drawer heights available: 3", 4", 5", 6", 8" and 12".



PRECONFIGURED MODELS – CABINETS

HERE ARE SOME OF OUR MOST POPULAR PRECONFIGURED MODELS OF THE L COMPACT STATIONARY CABINETS

- The doors are factory installed with hinges on the left. They can be installed on the right upon request
- To order a key lock on the cabinet housing (for models with more than one drawer) or on the door, add L3 to the end of the product number
- To add a LP safety hasp, an L50 digital lock or an L100 smart lock to a door or to your L cabinet
- To order a cabinet with a 4" base, add C to the end of the product number for a painted steel base or D for a stainless steel base, e.g., L3ABD-2401L3 C for an 18"W×21"D×24"H cabinet, with four drawers, a lock and a 4"H painted steel base



334-338

IMPORTANT

Drawer compartments are included in all models. See the table for the number of compartments.



To order drawers without compartments, replace the last two digits of the model number with the next even number up.

e.g., L3ABD-2401 with
L3ABD-2402 without

NUMBER OF COMPARTMENTS (LAYOUT CODE)

DRAWER DIMENSIONS	18"W×21"D	18"W×27"D
3"H to 5"H	9 (0206)	9 (0206)
6"H and 8"H	6 (0104)	6 (0104)
12"H	4 (0102)	4 (0102)

24"HIGH (W × D × H)



4 DRAWERS

L3ABD-2401__	18"×21"×24"
L3ABG-2401__	18"×27"×24"



4 DRAWERS

L3ABD-2403__	18"×21"×24"
L3ABG-2403__	18"×27"×24"



4 DRAWERS

L3ABD-2405__	18"×21"×24"
L3ABG-2405__	18"×27"×24"



3 DRAWERS

L3ABD-2407__	18"×21"×24"
L3ABG-2407__	18"×27"×24"



4 DRAWERS

L3ABD-2409__	18"×21"×24"
L3ABG-2409__	18"×27"×24"



1 DOOR / 1 SHELF

L3ABD-2412__	18"×21"×24"
L3ABG-2412__	18"×27"×24"



3 DRAWERS

L3ABD-2421__	18"×21"×24"
L3ABG-2421__	18"×27"×24"



3 DRAWERS

L3ABD-2415__	18"×21"×24"
L3ABG-2415__	18"×27"×24"



4 DRAWERS

L3ABD-2417__	18"×21"×24"
L3ABG-2417__	18"×27"×24"



5 DRAWERS

L3ABD-2419__	18"×21"×24"
L3ABG-2419__	18"×27"×24"

28"HIGH (W × D × H)



4 DRAWERS

L3ABD-2801__	18"×21"×28"
L3ABG-2801__	18"×27"×28"



4 DRAWERS

L3ABD-2807__	18"×21"×28"
L3ABG-2807__	18"×27"×28"



2 DRAWERS

L3ABD-2809__	18"×21"×28"
L3ABG-2809__	18"×27"×28"



3 DRAWERS

L3ABD-2811__	18"×21"×28"
L3ABG-2811__	18"×27"×28"



4 DRAWERS

L3ABD-2819__	18"×21"×28"
L3ABG-2819__	18"×27"×28"



6 DRAWERS

L3ABD-2821__	18"×21"×28"
L3ABG-2821__	18"×27"×28"



3 DRAWERS

L3ABD-2803__	18"×21"×28"
L3ABG-2803__	18"×27"×28"



2 DOORS / 1 SHELF

L3ABD-2828__	18"×21"×28"
L3ABG-2828__	18"×27"×28"



1 DRAWER / 1 DOOR

L3ABD-2829__	18"×21"×28"
L3ABG-2829__	18"×27"×28"



4 DRAWERS

L3ABD-2835__	18"×21"×28"
L3ABG-2835__	18"×27"×28"



PRECONFIGURED MODELS – CABINETS

34"HIGH (W × D × H)



5 DRAWERS

L3ABD-3403__	18" × 21" × 34"
L3ABG-3403__	18" × 27" × 34"



4 DRAWERS

L3ABD-3407__	18" × 21" × 34"
L3ABG-3407__	18" × 27" × 34"



1 DRAWER / 1 DOOR / 1 SHELF

L3ABD-3411__	18" × 21" × 34"
L3ABG-3411__	18" × 27" × 34"



5 DRAWERS

L3ABD-3415__	18" × 21" × 34"
L3ABG-3415__	18" × 27" × 34"



5 DRAWERS

L3ABD-3419__	18" × 21" × 34"
L3ABG-3419__	18" × 27" × 34"



4 DRAWERS

L3ABD-3421__	18" × 21" × 34"
L3ABG-3421__	18" × 27" × 34"



6 DRAWERS

L3ABD-3405__	18" × 21" × 34"
L3ABG-3405__	18" × 27" × 34"



1 DOOR / 1 SHELF

L3ABD-3436__	18" × 21" × 34"
L3ABG-3436__	18" × 27" × 34"



6 DRAWERS

L3ABD-3437__	18" × 21" × 34"
L3ABG-3437__	18" × 27" × 34"



4 DRAWERS

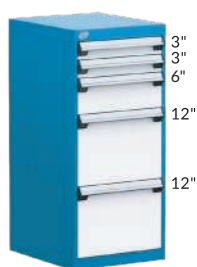
L3ABD-3447__	18" × 21" × 34"
L3ABG-3447__	18" × 27" × 34"

40"HIGH (W × D × H)



6 DRAWERS

L3ABD-4005__	18" × 21" × 40"
L3ABG-4005__	18" × 27" × 40"



5 DRAWERS

L3ABD-4047__	18" × 21" × 40"
L3ABG-4047__	18" × 27" × 40"



8 DRAWERS

L3ABD-4011__	18" × 21" × 40"
L3ABG-4011__	18" × 27" × 40"



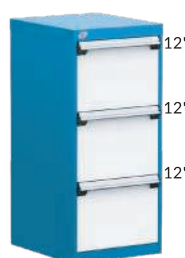
4 DRAWERS / 1 DOOR / 1 SHELF

L3ABD-4015__	18" × 21" × 40"
L3ABG-4015__	18" × 27" × 40"



3 DRAWERS / 1 DOOR

L3ABD-4017__	18" × 21" × 40"
L3ABG-4017__	18" × 27" × 40"



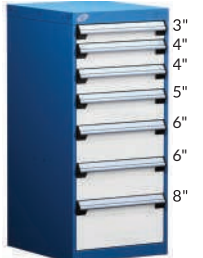
3 DRAWERS

L3ABD-4007__	18" × 21" × 40"
L3ABG-4007__	18" × 27" × 40"



6 DRAWERS

L3ABD-4025__	18" × 21" × 40"
L3ABG-4025__	18" × 27" × 40"



7 DRAWERS

L3ABD-4027__	18" × 21" × 40"
L3ABG-4027__	18" × 27" × 40"



6 DRAWERS

L3ABD-4029__	18" × 21" × 40"
L3ABG-4029__	18" × 27" × 40"



6 DRAWERS

L3ABD-4031__	18" × 21" × 40"
L3ABG-4031__	18" × 27" × 40"

