

SECURITY MECHANISMS

KEY LOCK / SAFETY HASP FOR CABINET

L3/LP



334-335

- Locks all drawers in the cabinet at the same time
- Easy to retrofit
- The drawer layout can be changed without touching the locking mechanism
- To order a lock, add L3 to the cabinet housing or preconfigured model number e.g., LA30-182134L3
- To order a safety hasp, add LP to the cabinet housing product number e.g., LA30-182134LP
- For replacement parts or to retrofit this mechanism

PRODUCT NO.

| | |
|----|-------------|
| L3 | Key lock |
| LP | Safety hasp |

DRAWER LOCK

L3



334

- Two keys provided with each lock
- Compatible with all drawer dimensions
- The mechanism (covered by a galvanized steel box) requires 3"W×1"D space inside the drawer
- To order: Add L3 to the product number for the drawer or preconfigured compartment layout e.g., LF31-182106L3
- For replacement parts or to retrofit this mechanism

PRODUCT NO.

L3

NOTE: An LF91 security panel must be ordered to block access between two drawers and if two different user access rights are required.

DIGITAL LOCK FOR CABINET

L50



336

- Electronically locks all drawers in the cabinet at the same time
- No key required
- Up to 20 different users can be programmed
- 4-8 digit access codes
- Simplifies access management to drawers
- To order a lock, add L50 to the cabinet housing or preconfigured model number e.g., LA30-182134L50
- For replacement parts or to retrofit this mechanism,

PRODUCT NO.

L50

SMART LOCK FOR CABINET



L100



337

- Handy unlocking via a transponder or smartphone
- User-friendly and intuitive
- No key required
- Easy and comprehensive management
- To order a lock, add L100 to the cabinet housing or preconfigured model number e.g., LA30-182134L100
- For replacement parts or to retrofit this mechanism,

PRODUCT NO.

L50

NOTE: NFC transponders are not included with the lock, they must be ordered separately (pack of 5). See page 338.

LOCK-IN MECHANISM

B



- Activated with the right hand by sliding the mechanism with thumb
- The drawer closes without having to reactivate the sliding mechanism
- Stops drawers from opening on their own
- Easy to retrofit
- To order: Add B to the product number for the drawer or preconfigured compartment layout e.g., LF31-182106B
- For replacement parts or to retrofit this mechanism, order an LY01 and a LY02

PRODUCT NO.

B

KEY LOCK / SAFETY HASP FOR DOORS

L3/LP



334-335

- Two keys provided with each lock
- To order a key lock, add L3 to the door product number e.g., LB30-1812L3
- To order a safety hasp, add LP to the door product number e.g., LB30-1812LP
- For replacement parts or to retrofit this mechanism,

PRODUCT NO.

| | |
|----|-------------|
| L3 | Key lock |
| LP | Safety hasp |

NOTE: An LF91 security panel must be ordered to block access between two doors and if two different user access rights are required.

ACCESSORIES

DIGITAL LOCK FOR DOORS

L50



336

- Electronically locks a cabinet door
- No key required
- Up to 20 different users can be programmed
- 4-8 digit access codes
- To order: Add L50 to the door product code, e.g. LB30-1812L50

PRODUCT NO.

L50

NOTE: Cannot be retrofitted.

SMART LOCK FOR DOORS



L100



337

- Handy unlocking via a transponder or smartphone
- User-friendly and intuitive
- No key required
- Easy and comprehensive management
- To order: Add L100 to the door product code, e.g. LB30-1812L100

PRODUCT NO.

L100

NOTES: Cannot be retrofitted.

NFC transponders are not included with the smart lock, they must be ordered separately (pack of 5). See page 338.

DRAWER AND HANDLE ACCESSORIES

HANDLE PROTECTOR

LF70



- Clips onto the drawer handle
- Made of transparent plastic
- Protects identification labels from dust, grease and dirt
- Easy to remove

PRODUCT NO.

LF70-18

HANDLE LABELS

LF71



- Labels to be attached to handles under the handle protector (LF70)
- 30 labels per page (10 pages)
- Print your own labels

PRODUCT NO.

LF71-425075

HANGING FILE BARS

LG31



- For storing hanging files
- Fits both letter and legal sizes
- For 12"H drawers

PRODUCT NO.

LG31-18

PVC DRAWER LINER

LG40



- Protects items stored in the drawer
- Non-slip material
- Can be installed under partitions and dividers
- Thickness: 3/32"

PRODUCT NO.

FOR DRAWER

LG40-1821-01

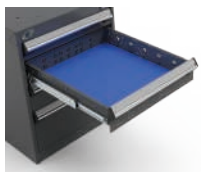
18"W × 21"D

LG40-1827-01

18"W × 27"D

PROTECTIVE FOAM

LG41



- Protects items stored in the drawer
- Includes one piece of 1/4"-thick blue foam

PRODUCT NO.

FOR DRAWER

LG41-1821-01

18"W × 21"D

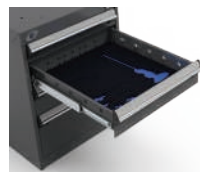
LG41-1827-01

18"W × 27"D

NOTE: Partitions and dividers cannot be installed in the same drawer as this foam.

TOOL FOAM

LG42



- Oil resistant and non-absorbent
- Includes one piece of 1/4"-thick blue foam
- Includes one piece of 1/2"-thick black foam
- Sold without cut-outs. Can be cut with a utility knife

PRODUCT NO.

FOR DRAWER

LG42-1821-01

18"W × 21"D

LG42-1827-01

18"W × 27"D



Sold without cut-outs.

FRONT TO BACK PARTITION

LG02



- Divides the drawer along its depth
- Clip system locks dividers in place
- Galvanized steel
- Compatible with RG10 dividers, which can be used to make smaller compartments between each partition
- Compatible with plastic bins and PVC drawer liners

| NOMINAL DRAWER HEIGHT (ACTUAL) | NOMINAL DRAWER DEPTH (ACTUAL) | |
|--------------------------------|-------------------------------|-----------|
| | 21" (18") | 27" (24") |
| 3" (1 1/8"H) | LG02-2103 | LG02-2703 |
| 4" (2 1/8"H) | LG02-2104 | LG02-2704 |
| 5" (3 1/8"H) | LG02-2105 | LG02-2705 |
| 6" (4 1/8"H) | LG02-2106 | LG02-2706 |
| 8" (6 1/8"H) | LG02-2108 | LG02-2708 |
| 12" (8 1/8"H) | LG02-2110 | LG02-2710 |

PLASTIC BIN

RG20



- For easier storing, moving and managing of small parts
- Lightweight and durable
- For 3"H and 4"H drawers
- 45° angled rim for easy identification of bin contents and removal of bins
- Compatible with partitions and dividers
- 6" plastic bins can be subdivided

| DIMENSIONS | | | PRODUCT NO. | | |
|------------|----|----|-------------|-----------|-----------|
| W | D | H | BIN | PARTITION | DIVIDER |
| 3" | 3" | 2" | RG20-030302 | - | - |
| 4" | 3" | 2" | RG20-040302 | - | - |
| 6" | 3" | 2" | RG20-060302 | RG22-0302 | - |
| 6" | 6" | 2" | RG20-060602 | RG22-0602 | RG24-0602 |
| 3" | 3" | 3" | RG20-030303 | - | - |
| 4" | 3" | 3" | RG20-040303 | - | - |
| 6" | 3" | 3" | RG20-060303 | RG22-0303 | - |
| 6" | 6" | 3" | RG20-060603 | RG22-0603 | RG24-0603 |

NOTE: 2"H bins = 1 1/2" actual height
3"H bins = 2 1/2" actual height

DRAWER DIVIDER

RG10



- Dividers clip in place
- 45° angled edge for easy identification of compartment contents
- Adjustable in 3" increments (c/c)
- Galvanized steel

| NOMINAL DIVIDER WIDTH | NOMINAL DRAWER HEIGHT (ACTUAL) | | | | | |
|-----------------------|--------------------------------|--------------|--------------|--------------|--------------|---------------|
| | 3" (1 1/8"H) | 4" (2 1/8"H) | 5" (3 1/8"H) | 6" (4 1/8"H) | 8" (6 1/8"H) | 12" (8 1/8"H) |
| 3" | RG10-03003 | RG10-03004 | RG10-03005 | RG10-03006 | RG10-03008 | RG10-03010 |
| 5" | RG10-05003 | RG10-05004 | RG10-05005 | RG10-05006 | RG10-05008 | RG10-05010 |
| 6" | RG10-06003 | RG10-06004 | RG10-06005 | RG10-06006 | RG10-06008 | RG10-06010 |
| 7 1/2" | RG10-07503 | RG10-07504 | RG10-07505 | RG10-07506 | RG10-07508 | RG10-07510 |
| 9" | RG10-09003 | RG10-09004 | RG10-09005 | RG10-09006 | RG10-09008 | RG10-09010 |
| 10" | RG10-10003 | RG10-10004 | RG10-10005 | RG10-10006 | RG10-10008 | RG10-10010 |
| 12" | RG10-12003 | RG10-12004 | RG10-12005 | RG10-12006 | RG10-12008 | RG10-12010 |
| 15" | RG10-15003 | RG10-15004 | RG10-15005 | RG10-15006 | RG10-15008 | RG10-15010 |



ACCESSORIES

CABINET TOPS

RESISTANT ACRYLIC/PVC PLASTIC LAMINATED TOP



WS08



- Ideal for assembly stations or for applications using solvents, oils or other chemical products
- Color: grey
- Sides protected with 1/8"-thick durable PVC
- Premium-quality laminated top
- Excellent chemical resistance (can be in prolonged contact with a substance)
- Superior abrasion resistance compared with standard laminated tops
- Superior impact resistance compared with standard laminated tops
- Attractive appearance
- Thickness: 1 1/2"

STEEL TOP WITH RUBBER MAT

RC32



- Non-slip rubber surface
- Includes edges on the sides and back
- Height: 1"

STAINLESS STEEL TOP

RC35



- Acts as a work surface and protects the cabinet from impacts
- Particle board top with stainless steel cover (#4 brushed finish)
- Excellent corrosion and chemical resistance
- Top complies with CARB regulations on formaldehyde emissions
- Includes welded corners for an attractive appearance
- Thickness: 1 3/4"

LAMINATED HARDWOOD TOP

WS14



- Top for general industrial applications
- Made from varnished hardwood slats
- Includes a 90° radius front edge for extra comfort
- High impact resistance
- Attractive appearance
- Thickness: 1 3/4"

PAINTED STEEL TOP

RC37



- Acts as a work surface and protects the cabinet from impacts
- Particle board top with painted steel cover
- Top complies with CARB regulations on formaldehyde emissions
- Includes welded corners for an attractive appearance
- Thickness: 1 3/4"

PLASTIC LAMINATED TOP



WS16



- Top for general use. Ideal for assembly stations, quality control and packaging
- Colors: Default is white. For another color, add "-BA" for black or "-GB" for gray to the end of the product number, e.g., WS16-6024A-BA for a black top
- Sides protected with 1/8"-thick durable PVC
- Includes a 90° radius front edge for extra comfort
- Attractive appearance
- Easy to clean
- Thickness: 1 1/2"



White

Black
-BAGray
-GB

DISSIPATIVE TOP



WS17



- Top for electronics tasks. Ideal for electronics inspection or assembly stations
- Color: white
- Sides protected with 1/8"-thick durable PVC
- Attractive appearance
- Easy to clean
- Includes a 90° radius front edge for extra comfort
- Dissipates electrical charges that can damage electronic components
- The resistance point to point and point to ground is between 10⁶ and 10⁹ Ω
- Thickness: 1 1/2"

NOTE: Grounding accessories are sold separately, [see page 35](#).

| DIMENSIONS | | CABINET TOPS | | | | | | |
|------------|-----|----------------------------------|-----------------------|----------------------|-------------|------------------------------|--------------------|------------------|
| W | D | ACRYLIC/PVC PLASTIC LAMINATED | LAMINATED HARDWOOD | PLASTIC LAMINATED | DISSIPATIVE | STEEL TOP WITH RUBBER MAT | STAINLESS STEEL | PAINTED STEEL |
| 18" | 21" | | WS14-1821A | WS16-1821A-__ | | RC32-1821-01 | RC35-1821 | RC37-1821 |
| | 27" | | WS14-1827A | WS16-1827A-__ | | RC32-1827-01 | RC35-1827 | RC37-1827 |
| 36" | 21" | WS08-3621A | WS14-3621A | WS16-3621A-__ | WS17-3621A | RC32-3621-01 | RC35-3621 | RC37-3621 |
| | 27" | WS08-3627A | WS14-3627A | WS16-3627A-__ | WS17-3627A | RC32-3627-01 | RC35-3627 | RC37-3627 |
| 54" | 21" | WS08-5421A | WS14-5421A | WS16-5421A-__ | WS17-5421A | RC32-5421-01 | RC35-5421 | RC37-5421 |
| | 27" | WS08-5427A | WS14-5427A | WS16-5427A-__ | WS17-5427A | RC32-5427-01 | RC35-5427 | RC37-5427 |

ESD PROTECTION

ESD PROTECTION KIT FOR CABINETS

 **EA91-01**



Grounding wrist strap
EA96-01



Wrist strap single socket
EA98-01



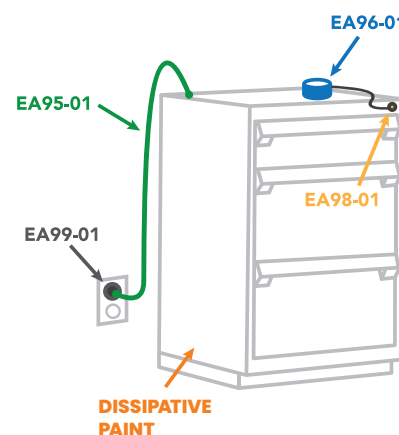
Grounding plug
EA99-01



Grounding cord
EA95-01

- Basic kit for grounding the operator and cabinet
- Kit includes an EA96 wrist strap, EA98 wrist strap socket, EA95 grounding cord, and EA99 grounding plug
- Grounding wrist strap includes a 6' cord with 1MΩ resistance

PRODUCT NO.
EA91-01



CONDUCTIVE PLASTIC BINS



285

DISSIPATIVE TOP



12

DISSIPATIVE PAINT

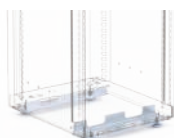


- Special paint dissipates electric charges (Black 090)

NOTE: Contact Customer Service for ESD paint prices.

LEVELING GLIDE KIT

LA74

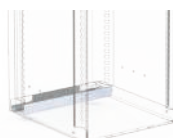


- Adjusts the height of cabinets 1 1/8" to 2" on uneven floor surfaces
- Can be installed under cabinets with or without bases
- Includes two brackets and four leveling glides

| PRODUCT NO. | WIDTH |
|-------------|-------|
| LA74-1801 | 18" |

FLOOR ANCHORING KIT

LA76



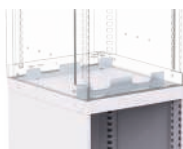
- For anchoring a cabinet (without base) to the floor
- Includes one bolt for concrete floors

| PRODUCT NO. | WIDTH |
|-------------|-------|
| LA76-1801 | 18" |

STACKING CABINETS

STACKING KIT

LA78



- For stacking an L compact cabinet on top of another
- Installs on the bottom of the top cabinet
- Includes two brackets and anchoring hardware

| PRODUCT NO. | WIDTH |
|-------------|-------|
| LA78-1801 | 18" |



L3XJD-2802L3



COMPONENTS

HOUSINGS

L COMPACT CABINET HOUSING

LA30



334-338

- Drawers, shelves and doors can be installed in the housing
- The housing units include knockouts:
 - On the top: for stacking an LD75 Housing for Drawer Unit or another LA30 L Compact Cabinet Housing. For the latter, order an LA78 Stacking Kit
 - On the sides and back: for assembling cabinets side to side and back to back, or for installing under a work surface. For the latter, order RA70 Cabinet Attachment Bars
- A 2" painted or stainless steel base can be added to make cabinet heights of 26", 30", 32", 36" and 42"
- A 4" painted or stainless steel base can be added to make cabinet heights of 28", 32", 34", 38" and 44"
- Four types of lock available: L3 for a key lock, LP for a safety hasp, L50 for an digital lock or L100 for a smart lock

| PRODUCT NO. | W × D × H |
|---------------|-----------------|
| LA30-182124__ | 18" × 21" × 24" |
| LA30-182128__ | 18" × 21" × 28" |
| LA30-182130__ | 18" × 21" × 30" |
| LA30-182134__ | 18" × 21" × 34" |
| LA30-182140__ | 18" × 21" × 40" |
| LA30-182724__ | 18" × 27" × 24" |
| LA30-182728__ | 18" × 27" × 28" |
| LA30-182730__ | 18" × 27" × 30" |
| LA30-182734__ | 18" × 27" × 34" |
| LA30-182740__ | 18" × 27" × 40" |

NOTE: NFC transponders are not included with the smart lock, they must be ordered separately (pack of 5). [See page 338.](#)

L COMPACT DRAWER

LF31



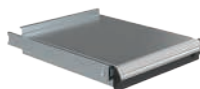
334

- 100lb. load capacity, 100% extension
- Vast choice of accessories available to customize the drawer to your storage needs
- Precision ball bearing drawer slides included
- Easy hook-on assembly
- For preconfigured drawer compartment layouts, [see pages 29-30](#)
- Drawer heights available: 3", 4", 5", 6", 8" and 12"
- To order: Add the drawer height required to the product number, e.g., LF31-182106
- To order a drawer lock, add L3 to the drawer product number, e.g., LF31-182704L3. The mechanism (covered by a galvanized steel box) requires 3"W × 1"D space inside the drawer
- To order a drawer lock-in mechanism, add "B" to the drawer product number, e.g., LF31-182103B

| PRODUCT NO. | W × D | INSIDE DIM. |
|-------------|-----------|-------------|
| LF31-1821__ | 18" × 21" | 15" × 18" |
| LF31-1827__ | 18" × 27" | 15" × 24" |

L 3-SIDES ACCESS
ROLL-OUT SHELF

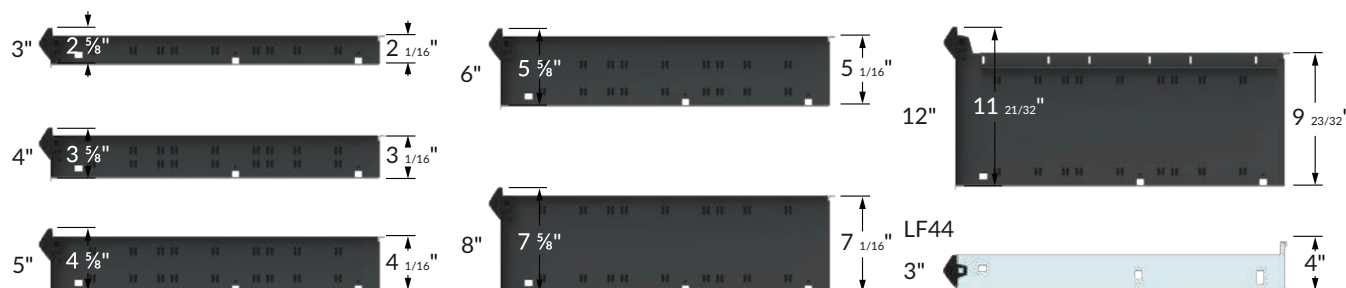
LF44



- 100lb. load capacity, 100% extension
- Precision ball bearing drawer slides included
- Easy hook-on assembly
- Galvanized steel top with 1½"H back
- Total height: 4"

| PRODUCT NO. | W × D | INSIDE DIM. |
|-------------|-----------|-------------|
| LF44-1821 | 18" × 21" | 15" × 18" |
| LF44-1827 | 18" × 27" | 15" × 24" |

DRAWER AND ROLL-OUT SHELF DIMENSIONS



HOUSING FOR DRAWER UNIT

LD75



- Installs on a cabinet or under a work surface
- 100lb. load capacity for each drawer in the unit, max. 175lb. per unit
- Compatible with LF31 compact drawers (not included)
- To order: Specify the drawer unit housing depth required, 21" or 27"

| PRODUCT NO. | INTERIOR DIM. |
|-------------|---------------|
| LD75-18__09 | 6" |
| LD75-18__12 | 9" |
| LD75-18__15 | 12" |

NOTE: Not compatible with the ElevaTek adjustable workstations.

INTEGRATED DOOR

LB30



- Black plastic recessed handle
- The doors are factory installed with hinges on the left. They can be installed on the right upon request
- An LB24 Adjustable Shelf must be ordered as a storage surface for doors installed above a drawer or another door
- Four types of lock available: L3 for a key lock, LP for a safety hasp, L50 for an digital lock or L100 for a smart lock



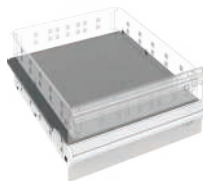
334-338

| PRODUCT NO. | W x H |
|-------------|-----------|
| LB30-1812__ | 18" x 12" |
| LB30-1818__ | 18" x 18" |
| LB30-1820__ | 18" x 20" |
| LB30-1824__ | 18" x 24" |
| LB30-1826__ | 18" x 26" |
| LB30-1830__ | 18" x 30" |
| LB30-1836__ | 18" x 36" |

NOTE: NFC transponders are not included with the smart lock, they must be ordered separately (pack of 5). [See page 338.](#)

SECURITY PANEL

LF91



- Divides the cabinet up for use by more than one user
- Adjustable in 1" increments c/c
- Must be ordered to:
 - Block access between doors
 - Block access when a door with lock is installed under a drawer
 - Block the space left when a door is installed above a drawer
- Two security panel versions available for housings with or without a central locking mechanism
- Galvanized steel
- To order: Specify the housing depth, 21" or 27"

| PRODUCT NO. | FOR LA30 |
|-------------|------------------------------|
| LF91-18__01 | With L3/LP on the housing |
| LF91-18__02 | Without L3/LP on the housing |

CABINET BASE

LA85/LA86



- Painted steel: LA85
- Stainless steel: LA86
- Heights available: 2" and 4"
- Recessed 2" from the front to create more space for feet
- Compatible with LA74 Leveling Glide Kit
- To order: Specify the type of steel required, e.g., LA86-182704 for an 18"W x 27"D x 4"H stainless steel base

| PRODUCT NO. | W x D x H |
|-------------|----------------|
| LA__-182102 | 18" x 21" x 2" |
| LA__-182104 | 18" x 21" x 4" |
| LA__-182702 | 18" x 27" x 2" |
| LA__-182704 | 18" x 27" x 4" |

NOTE: Not compatible with LA76 Floor Anchoring Kit, LA78 Stacking Kit and casters

DRAWER UNIT COVER

LD76



- Covers the top of an LD75 Housing for Drawer Unit when it is installed on a work surface

| PRODUCT NO. | W x D |
|-------------|-----------|
| LD76-1821 | 18" x 21" |
| LD76-1827 | 18" x 27" |

VERTICAL SECURITY BAR

LB10



- Locks all drawers in a cabinet with a key or padlock
- The key or safety hasp is located at the top of the bar to facilitate access
- Covers a bank of drawers from 20" to 36" high
- Easy to assemble
- Installs on the right-hand side
- To order: Specify the type of lock required, LP for a safety hasp or L3 for a key lock



334-335

| PRODUCT NO. | CABINET HEIGHT | VERTICAL SECURITY BAR HEIGHT |
|-------------|----------------|------------------------------|
| LB10-24__A | 24" | 20" |
| LB10-28__A | 28" | 24" |
| LB10-30__A | 30" | 26" |
| LB10-34__A | 34" | 30" |
| LB10-40__A | 40" | 36" |

SHELF

LB24



- For storage of bulky items
- Includes side and back edges
- Height can be adjusted in 1" increments c/c
- Up to 100lb. load capacity, evenly distributed
- Two shelf versions available for housings with or without a central locking mechanism
- Galvanized steel
- To order: Specify the housing depth, 21" or 27"

| PRODUCT NO. | FOR LA30 |
|-------------|---------------------------------------|
| LB24-18__01 | With L3/LP/L50/L100 on the housing |
| LB24-18__02 | Without L3/LP/L50/L100 on the housing |

